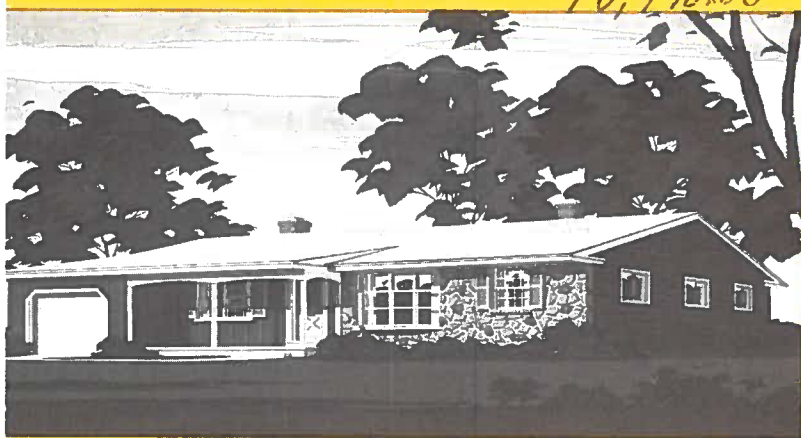


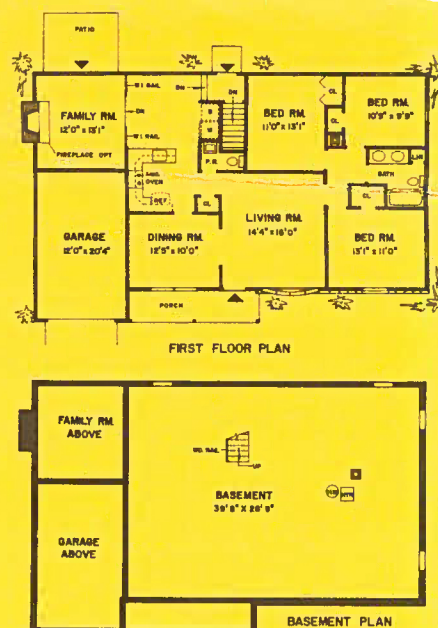
Air-Con.
\$890.00
Fire Place
795.00

The Birches, New
Jersey's newest and most
distinctive community of homes offers
you three elegantly styled homes from
which to choose. Once you've seen The Birches,
we're sure no other community will satisfy your
distinctive taste. The Birches was planned to allow
you complete privacy and freedom of individuality.
No matter which model at The Birches is your
personal choice — it will surely cater to your
every requirement. And you might note the
extra-ordinary value of these lovely homes.
Compare features and prices of The
Birches with any home in the area.
You'll be delightfully
surprised!

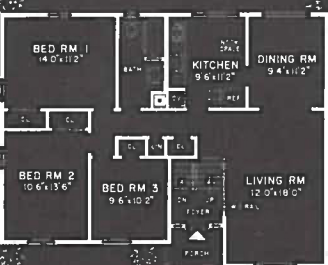
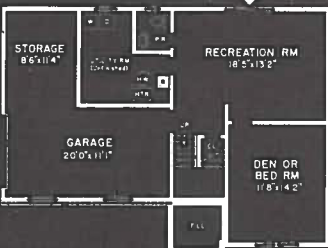
The Loden House



Here is a delightful 3 bedroom ranch with stone front, panelled den and garage. This home offers a full 30 x 40 basement, breakfast room area, lovely bow windows, attractive hardwood floors, full formal dining room, 19 foot country kitchen with Caloric oven and range, 1½ baths — the master bath includes a linen closet, full wall mirror, double bowl sink and vanette top. A fireplace and air conditioning are available at your option.



LOWER LEVEL FLOOR PLAN



UPPER LEVEL FLOOR PLAN

If you've been looking for a beautiful, four bedroom bi-level home, you'll be delighted with this handsome brick front house. The Tudor House was planned with spaciousness as the main theme with room arrangement offering maximum convenience, and privacy. Featuring a large 12' x 18' living room, foyer entrance, and spacious, fully equipped kitchen, The Tudor House has 1½ baths, huge utility room, kitchen caddy, full formica vanette cabinet, separate storage room, garage with side entrance, Thermopane all weather patio doors, patio, and beautifully landscaped grounds. A fireplace is available, if you wish.

The Tudor House



The Sherwood House



A truly lovely and spacious two-story home with four large bedrooms on the second floor. This home was designed to offer maximum room for living with: foyer entrance, full basement, garage, french doors leading to beautiful patio, spacious family room and 1½ baths with full vanette. The Sherwood House was also designed for beauty and distinction with lovely antique brick front and hand split shingles, bow windows, handsome hardwood floors, unique country kitchen, and, if you desire, magnificent large fireplace.

