



Tyler 3 bedrooms, bath, family room, covered front porch

Captivating in appearance, the Tyler was specifically planned to provide space and added comfort. This handsome stair free residence combines the best of popular contemporary styling with a warm blend of exterior textures and a well planned interior design.

Enter under the protection of a room-size, covered front porch and the Tyler will open to a richly inviting living room. Enhancing the charm is a broad bay window capturing all the cheerful sunlight.

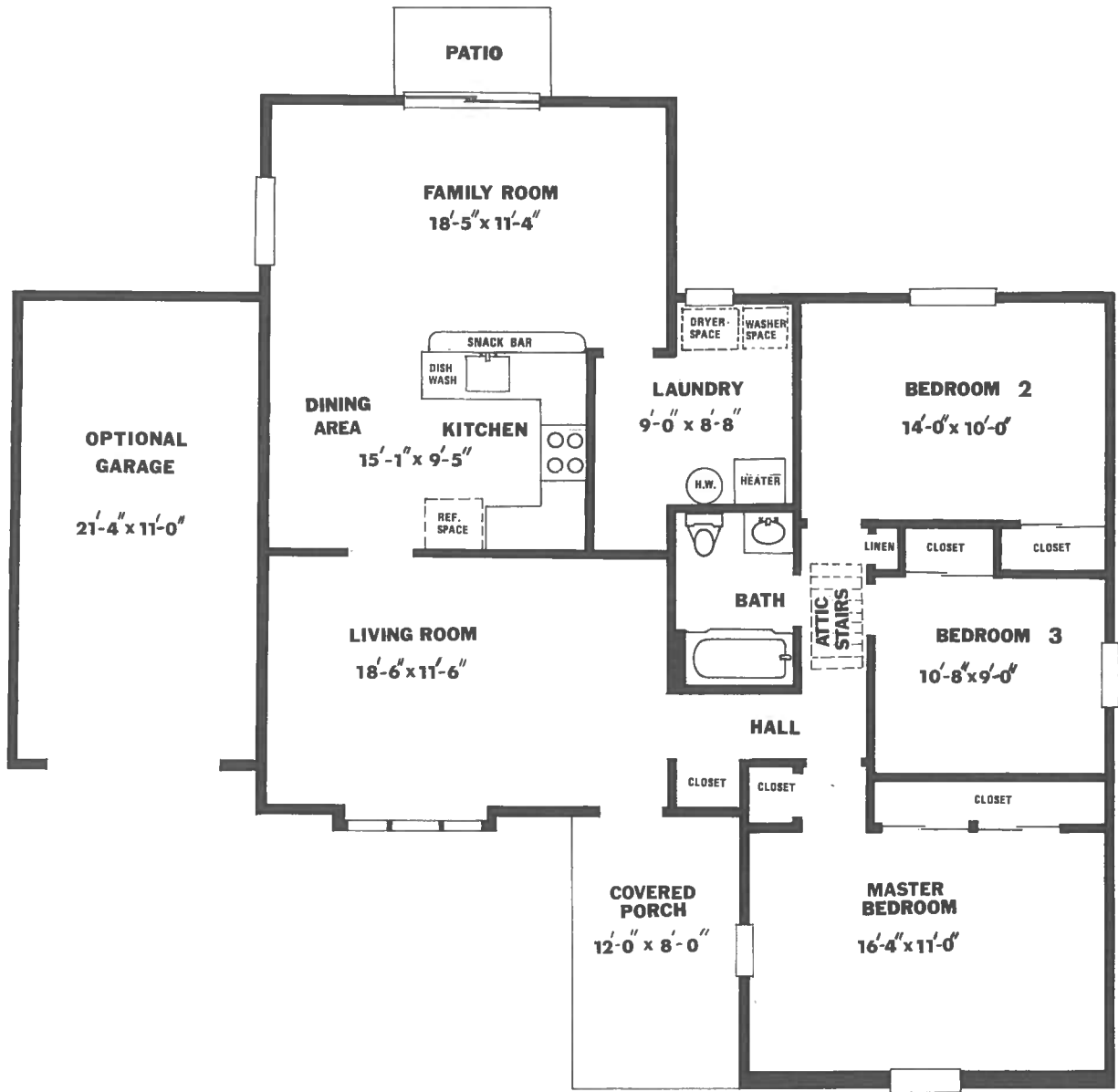
The space oriented family room, with sliding glass doors leading to the rear patio, will pleasantly

accommodate your leisure and entertaining requirements. Close convenience is provided by the location of the spacious kitchen and dining area.

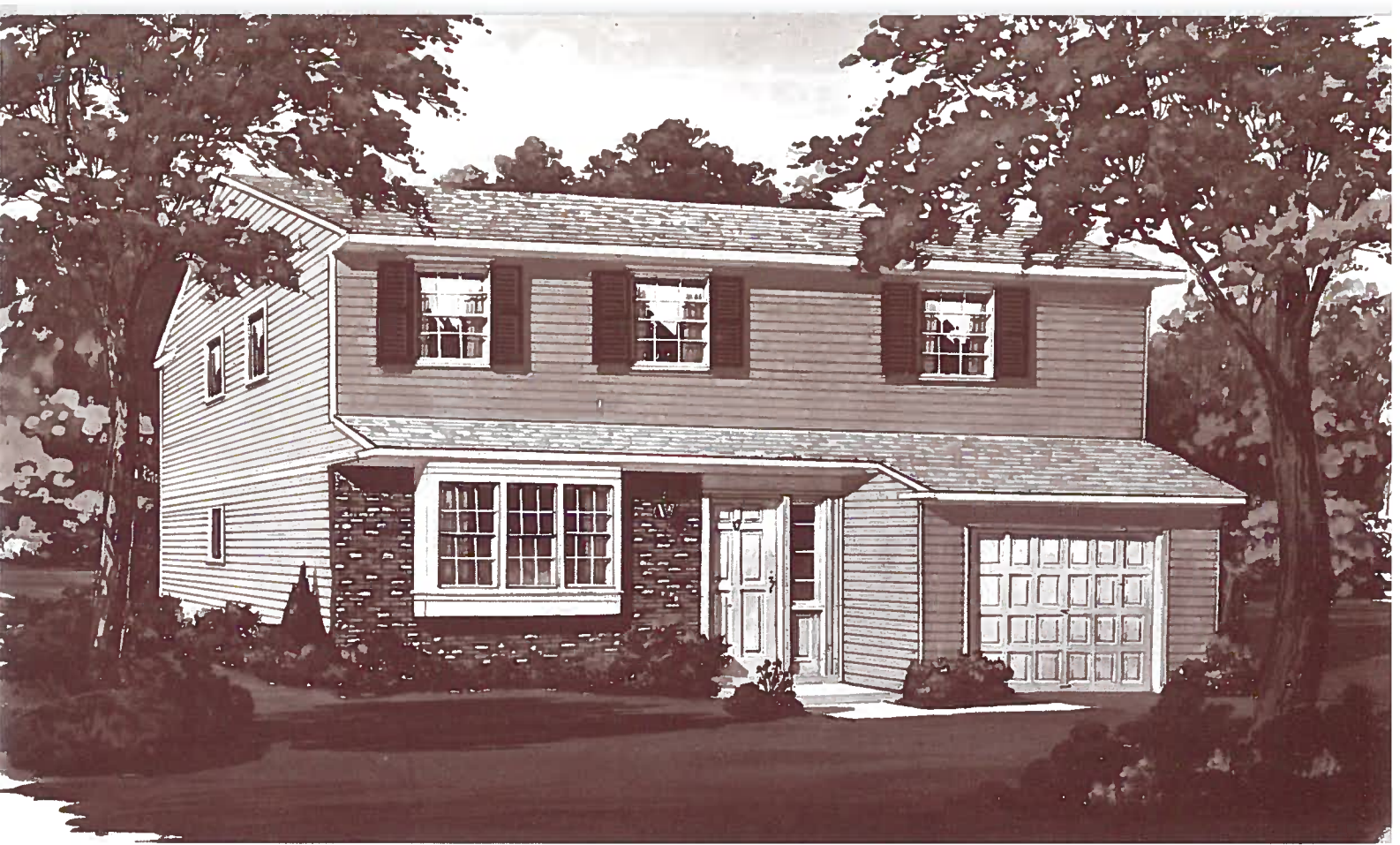
Many functions of this active house are amply provided for with three large bedrooms, each containing an abundance of closet space and all ideally situated for maximal privacy. For your added convenience an optional garage is also available.

The Tyler, with its delightfully captivating contemporary atmosphere, will reward you for a lifetime.

Heritage Valley  **by Paparone Construction**
of Washington Township



ALL DIMENSIONS ARE APPROXIMATE



Grenloch 3 bedrooms, 1½ baths, sitting room, garage

An early colonial adaption is fully expressed in this two story which exhibits many fine appointments within the interior design. Concentrating on a bright entrance with colonial pane windows trimming the door, the theme continues into the living room with an attractive bay window.

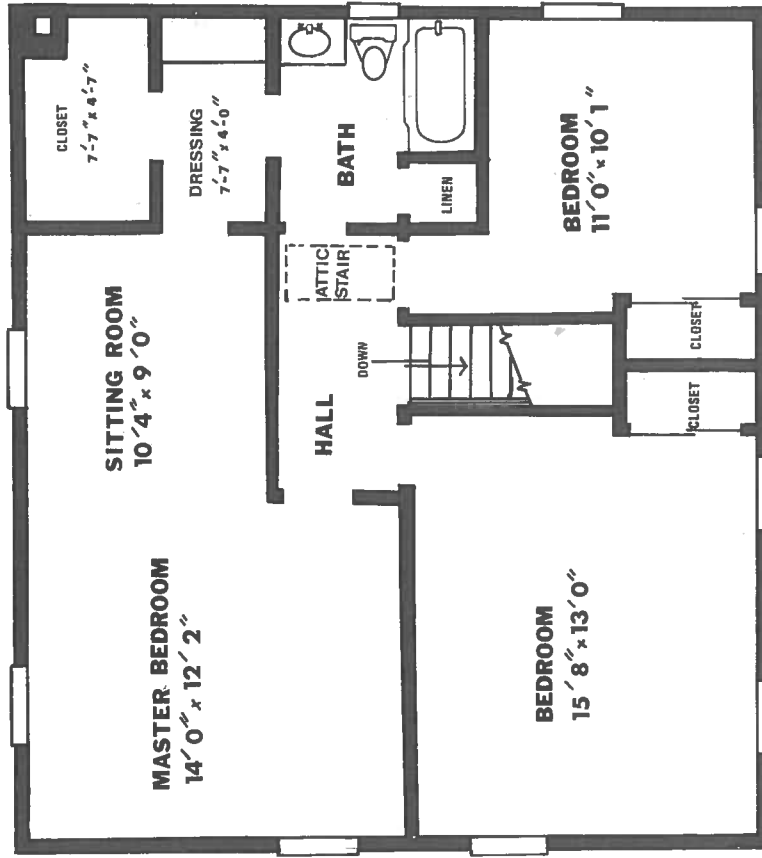
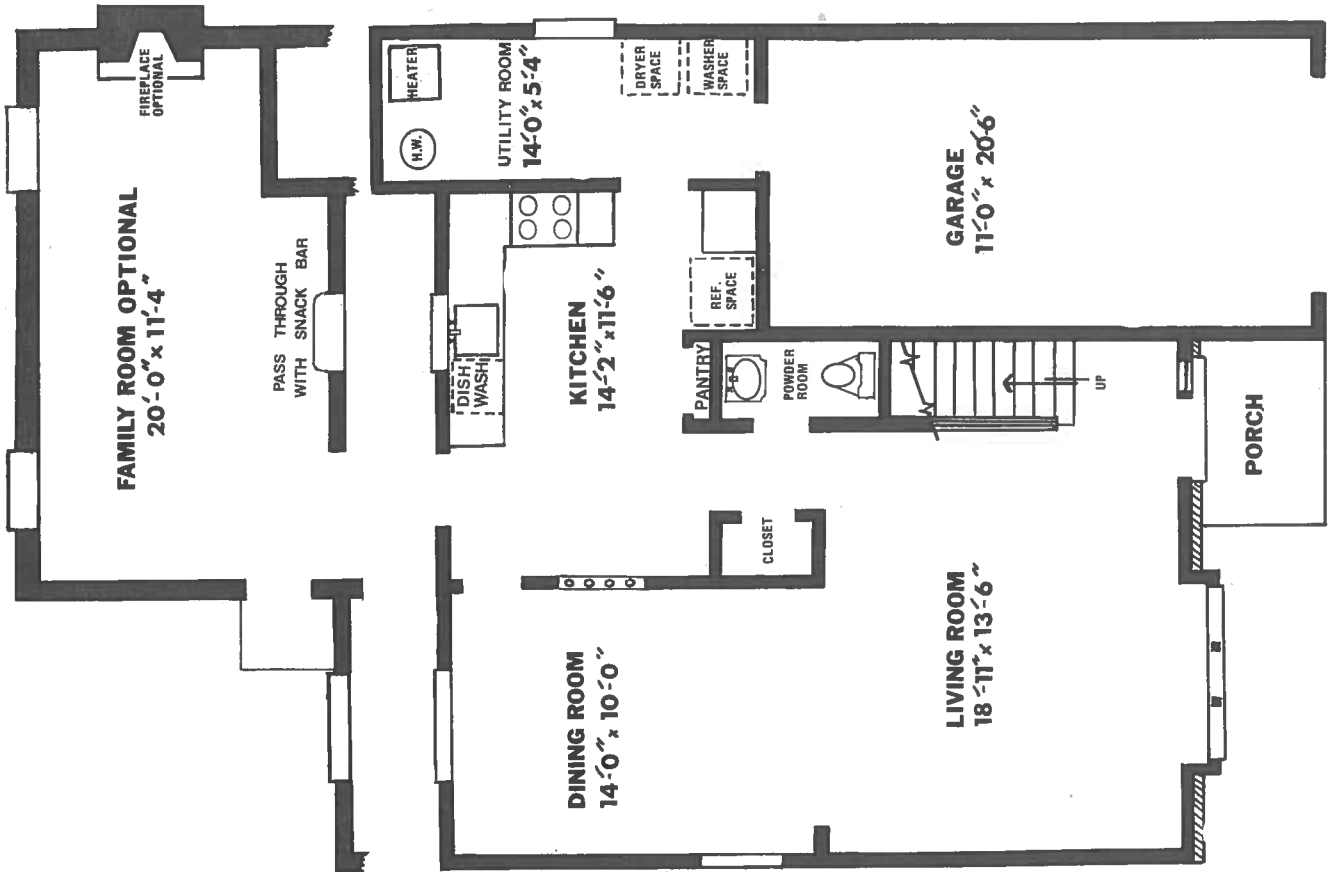
The first floor plan includes an entertaining living room and dining room which leads into a well placed kitchen with pantry closet and breakfast area. Adjacent to the kitchen but away from the main living area is the 14 foot utility room. Also located conveniently is the first floor powder room and a large hall coat closet.

Option for an additional family room is available.

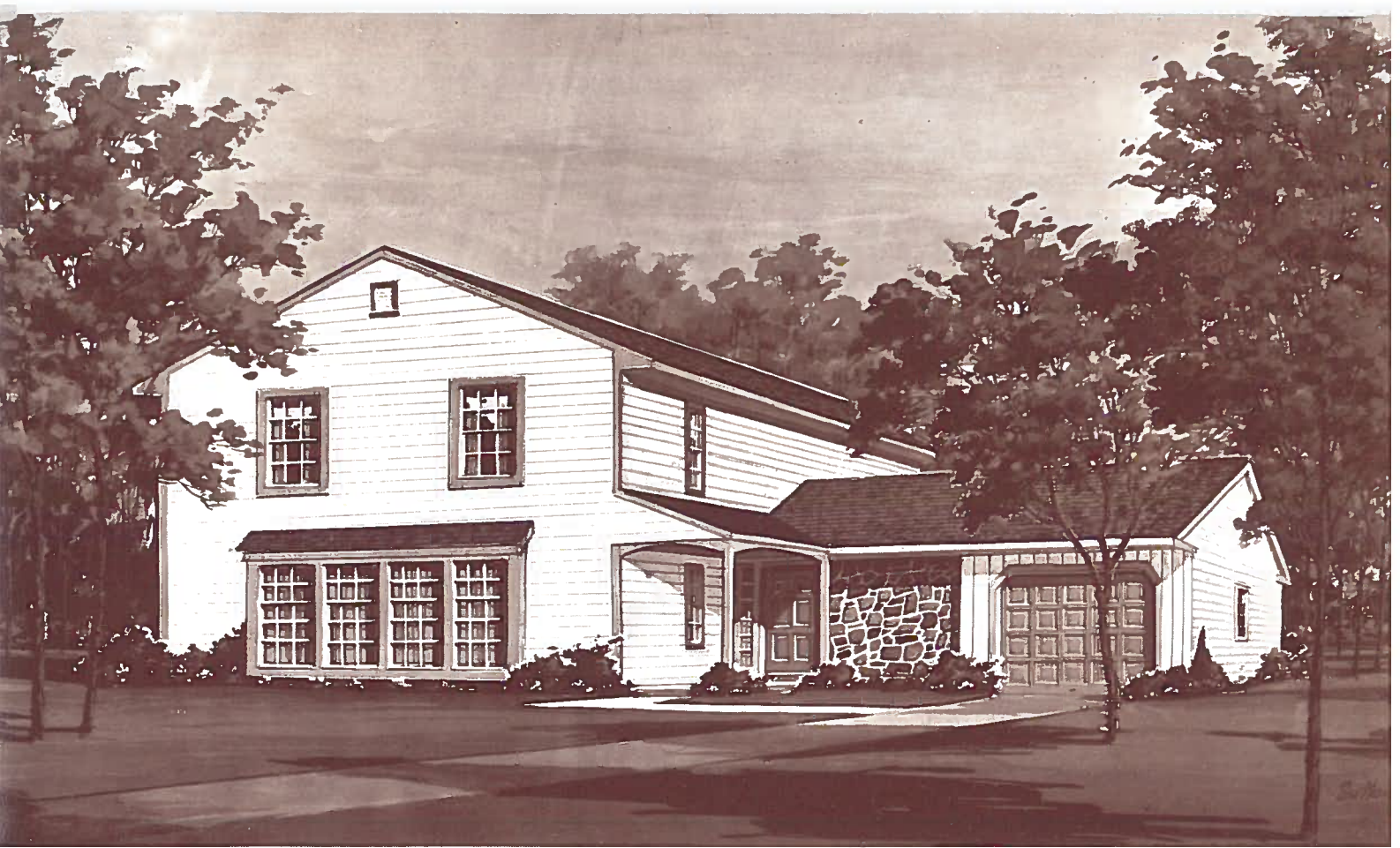
Gracious charm is most evident in the lavish master bedroom suite which includes sitting area, dressing area and a huge walk-in closet. The size of the three bedrooms are unusually large and offer the space needed for the growing family.

The Grenloch is ideally suited for those concerned with spacious rooms and excellent traffic pattern, and fresh colonial styling. Proven to be a very successful model, the Grenloch offers much for the discerning family.

Heritage Valley  **by Paparone Construction**
of Washington Township



ALL DIMENSIONS ARE APPROXIMATE



Salina 3 bedrooms, 1½ baths, family room, breakfast room, garage

The Salina represents a gracious yet modest contemporary version of traditional colonial two story architecture. Designed with fresh outdoor and indoor versatility, this residence is aptly suited to the needs of an active family, yet it retains a well-defined flair of elegance.

You are welcomed to the residence through the foyer entry which opens to a large living room complete with a dramatic box bay window affording a wealth of sunlight deep into the home's interior.

Your more than ample-size kitchen with separate breakfast room, conveniently adjoining the storage and laundry room, is an additional element of good

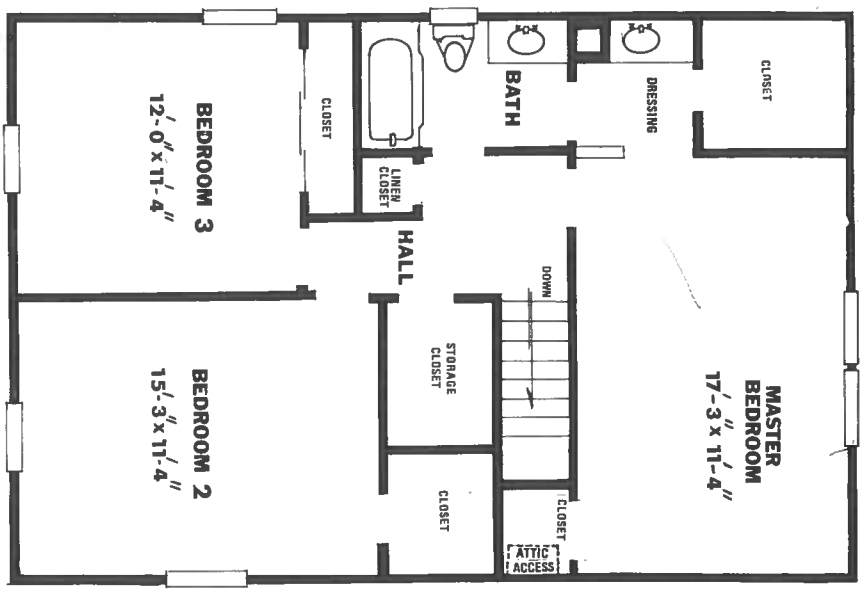
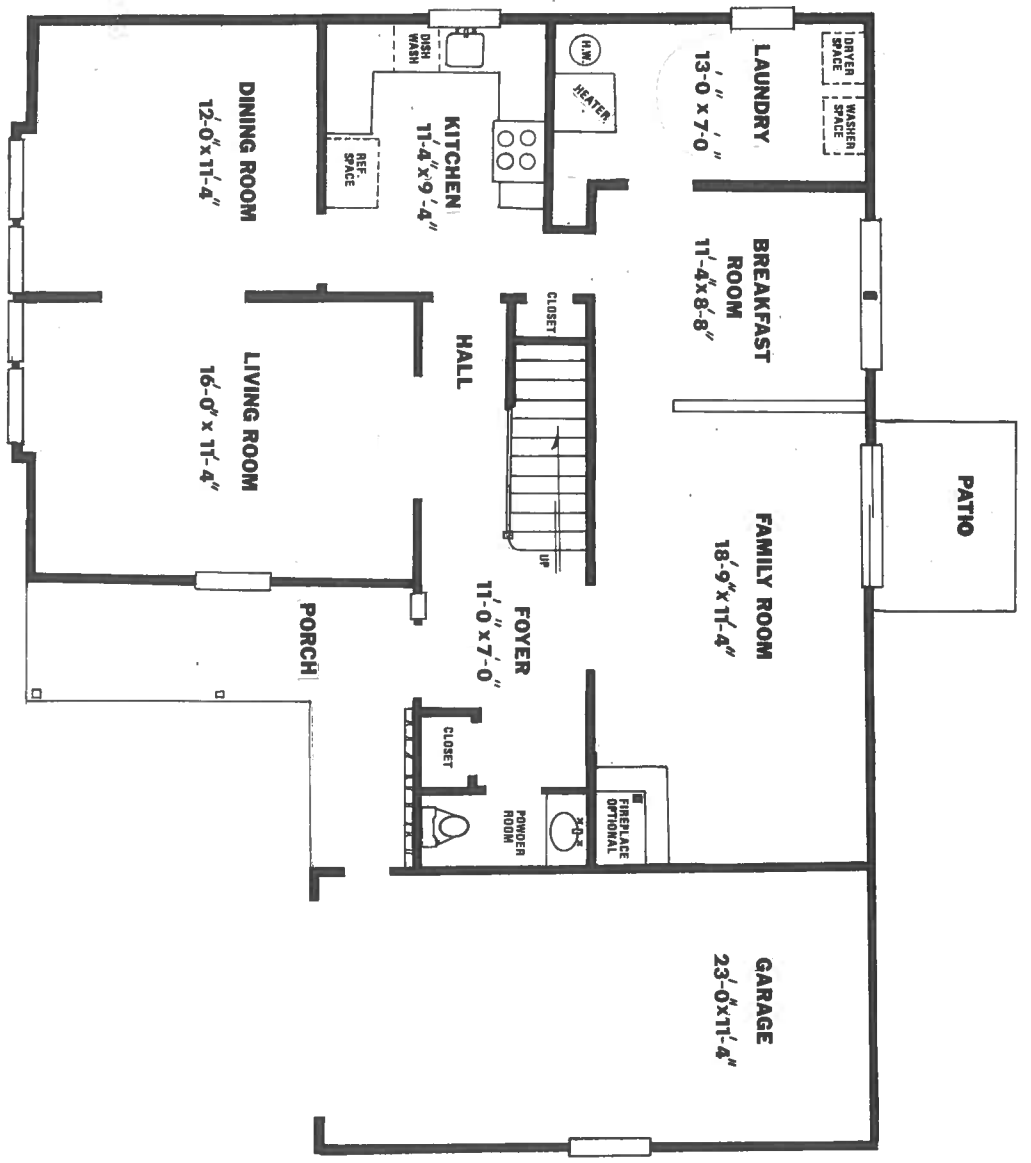
planning. Excellent space definition is a prime feature.

Entertaining is a pleasure in the huge family room where an optional fireplace is available for tranquil and relaxing winter evenings.

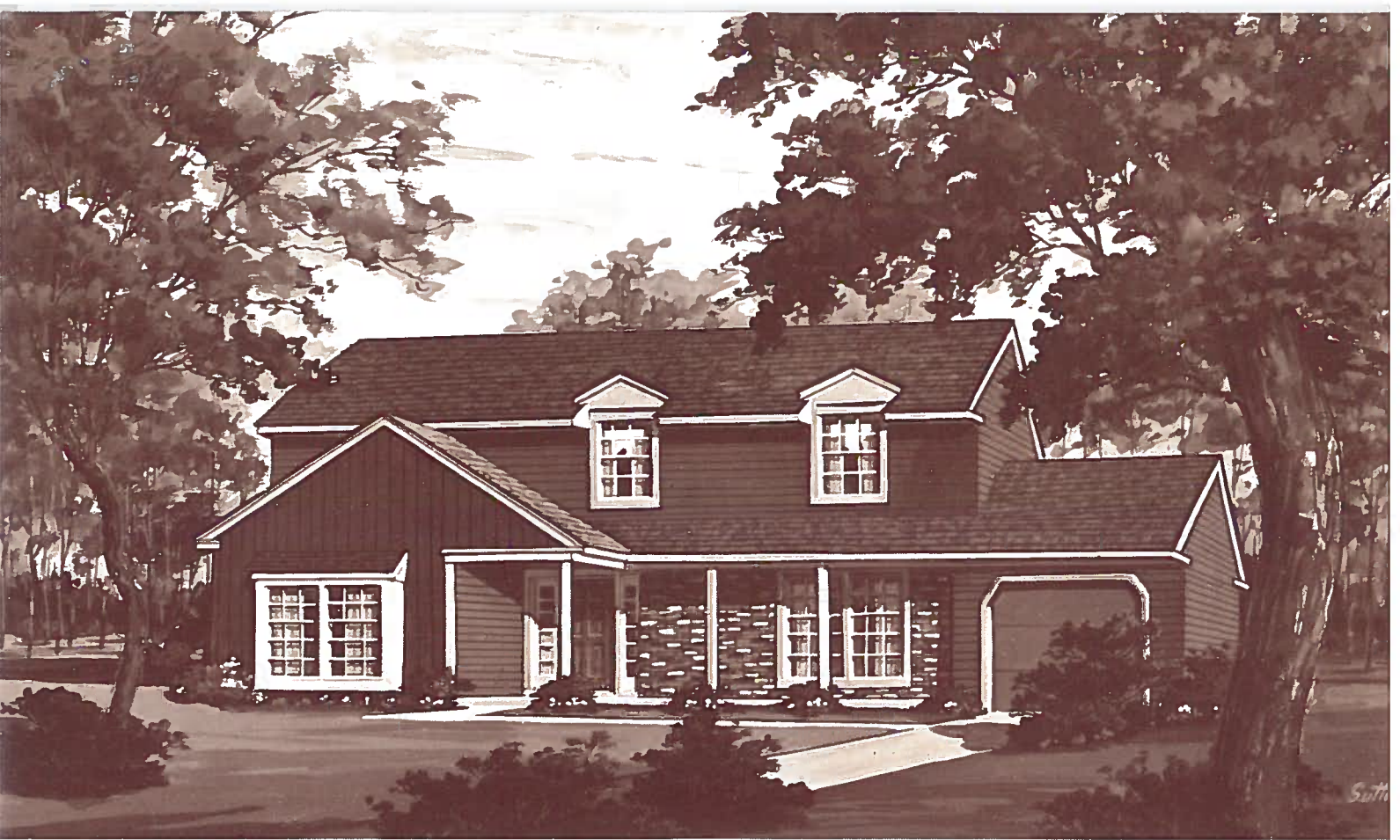
Quietly located on the sleeping level of the Salina are three bedrooms including master bedroom suite with private dressing area, convenient vanity area plus walk-in closet. There are two additional spacious storage closets also featured on the second level for your convenience.

The Salina . . . a sensitive response to the needs and desires of an active family.

Heritage Valley  **by Paparone Construction**
of Washington Township



ALL DIMENSIONS ARE APPROXIMATE



Bethel 4 bedrooms, 2½ baths, family room, breakfast room, garage

Charm is but one of many words which may be used to correctly describe this fine design. In addition to its eye-appeal, the Bethel has a practical and smoothly functioning floor plan.

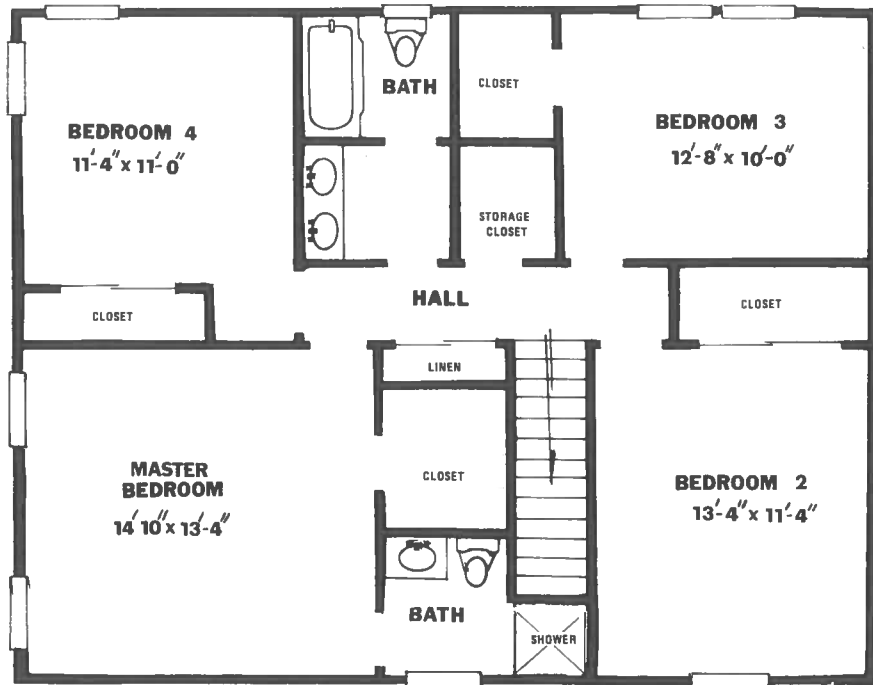
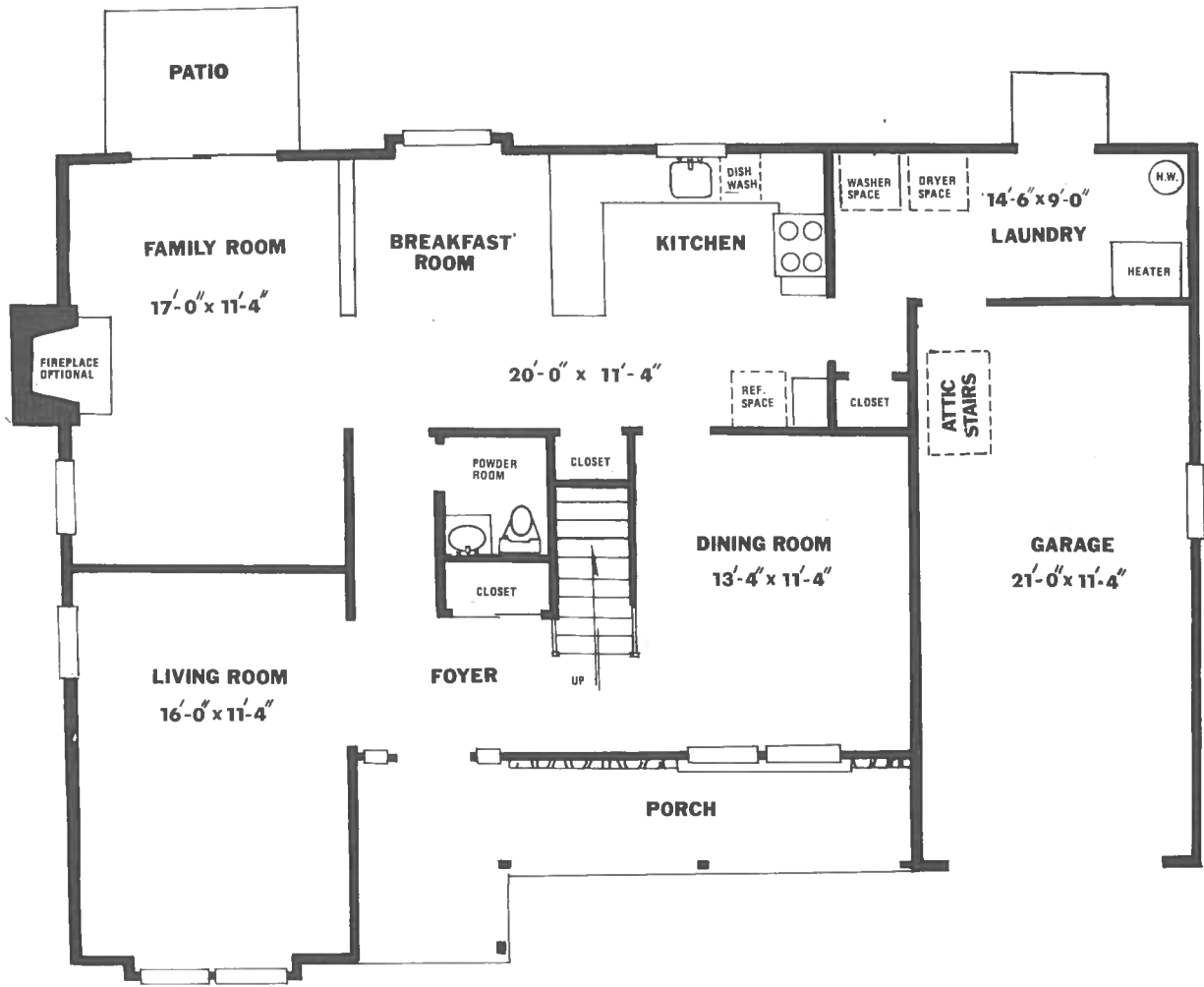
The detail and warmth of the protected front entry highlighted by attractive old-English styling, is outstanding. Observe the window treatment and then enter a most gracious center hall which elegantly divides the living room from the very spacious formal dining room. The focal point of activity will center in the well-planned kitchen and expansive family room. Designed for efficiency and abounding with space and fine cabinetry, the cooking center will

certainly be pleasing. And undoubtedly, the recreation room will more than adequately serve the family's needs plus be ideal for informal entertaining. Also located on the first level is a convenient powder room.

Being attentive to the requirements of a larger household, this plan continues to the second level where room size and closet space are first and foremost. The Bethel boasts four large bedrooms and two baths carefully planned to provide privacy.

The Bethel's sophistication and charm balanced with its practicality and convenience offer an unsurpassable combination.

Heritage Valley  **by Paparone Construction**
of Washington Township



ALL DIMENSIONS ARE APPROXIMATE