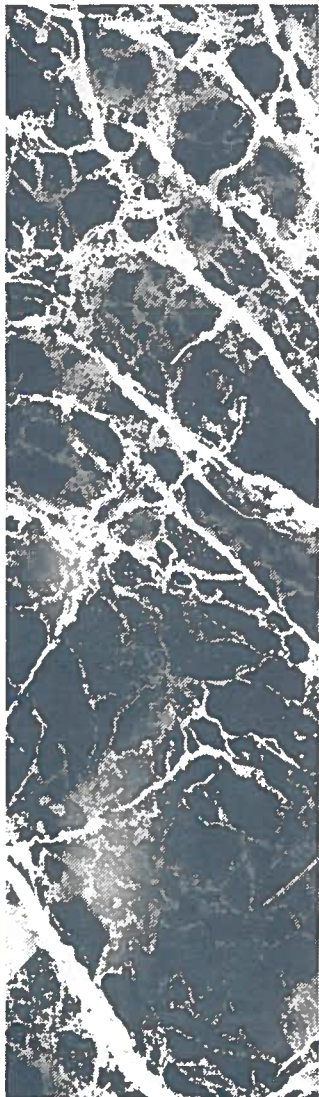


SHADOWBROOK

in Washington Township, New Jersey



Majestic residences in a country retreat

Retreat! Relax! Enjoy upscale living at Shadowbrook's park-like setting. Here amidst quiet, natural splendor is a refreshingly new and sophisticated community distinguished in many unique ways.

THE SETTING. . . lush stands of mature trees form a natural perimeter around these magnificent one half to three quarter acre home sites set on rolling terrain. Within Shadowbrook are five, peaceful lakes offering breathtaking views at selected locations. Peach orchards blossom in the country sun nearby.

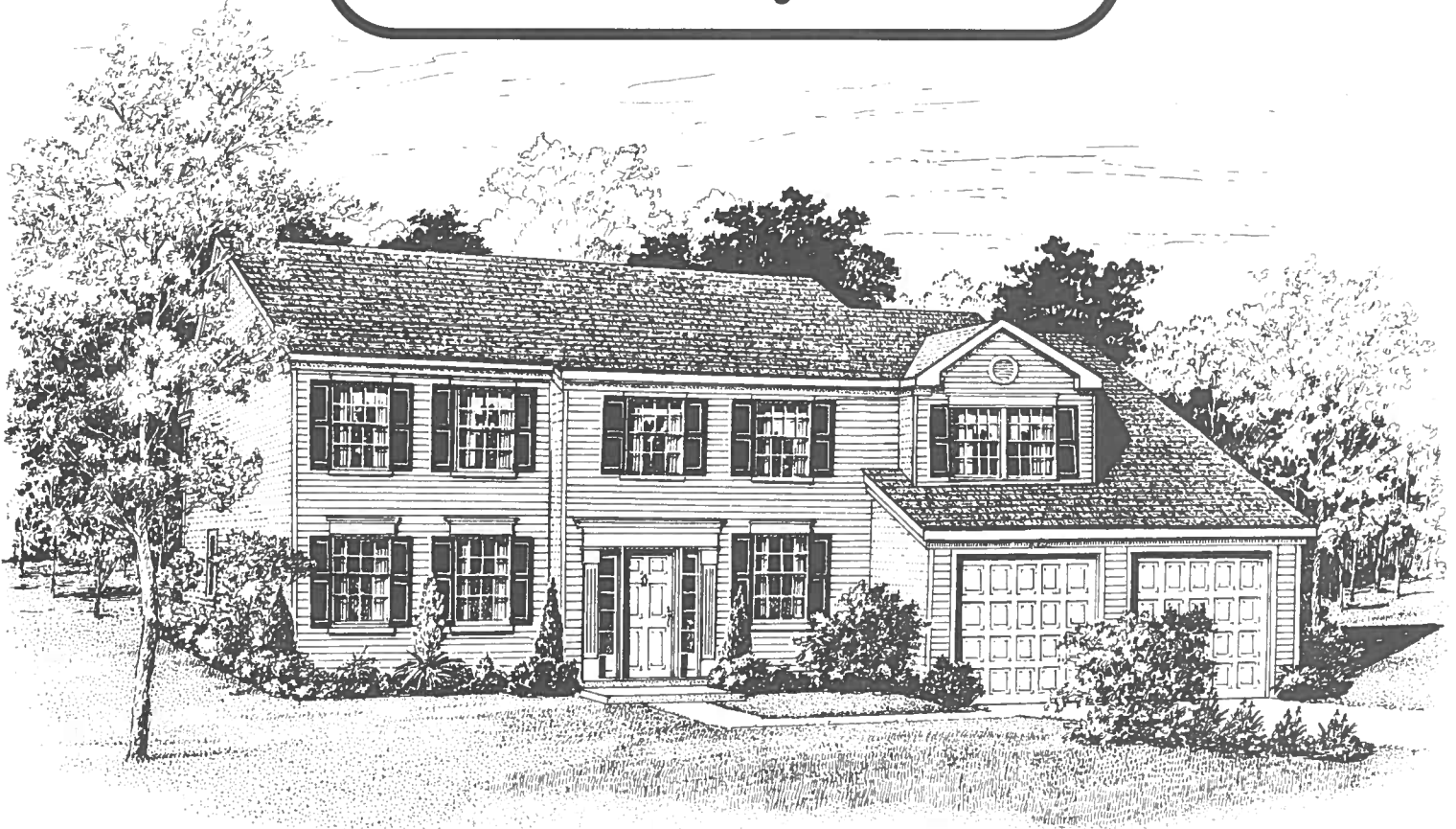
THE HOMES. . . these impressive country estates showcase the latest designs and reflect Papparone's renowned quality, craftsmanship and classic value.

THE LOCATION. . . although Shadowbrook is immersed in natural grandeur, it is strategically located on Fish Pond Road (Rt. 634) near the shopping centers, schools, entertainment, recreation and major highways. Here you can enjoy a private sanctuary yet retain the benefits of suburban convenience.

Shadowbrook . . . simply majestic!

by **Bruce Papparone** INC.

The Carlyle IV



The Carlyle IV Colonial



The Carlyle IV Provincial



The Carlyle IV Traditional

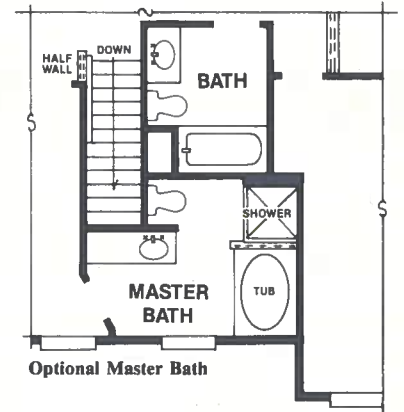
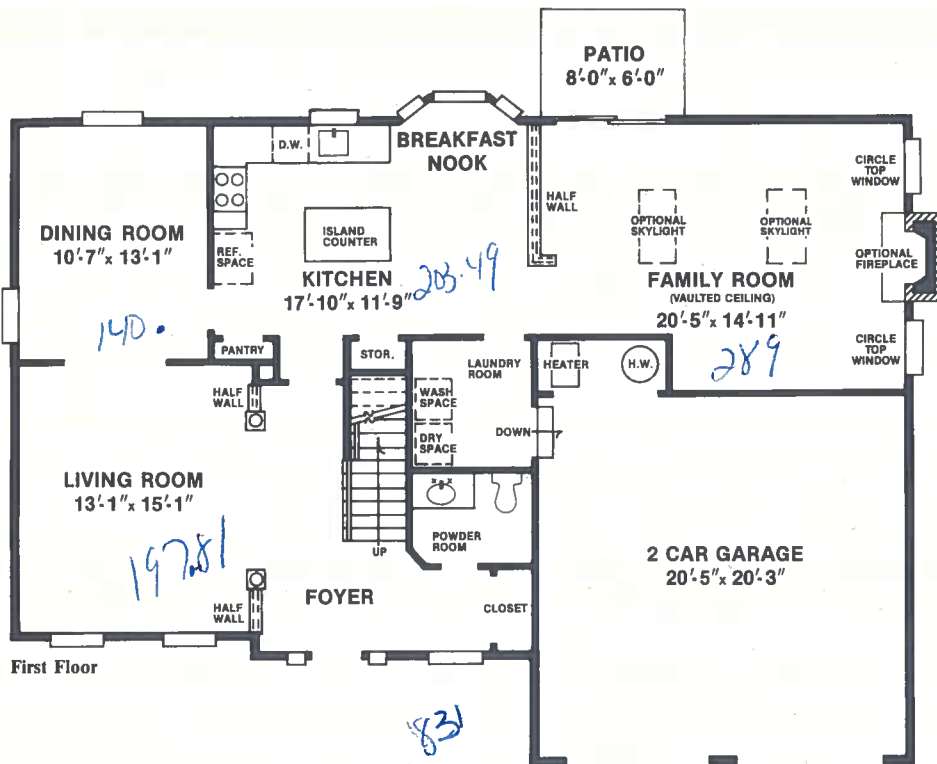
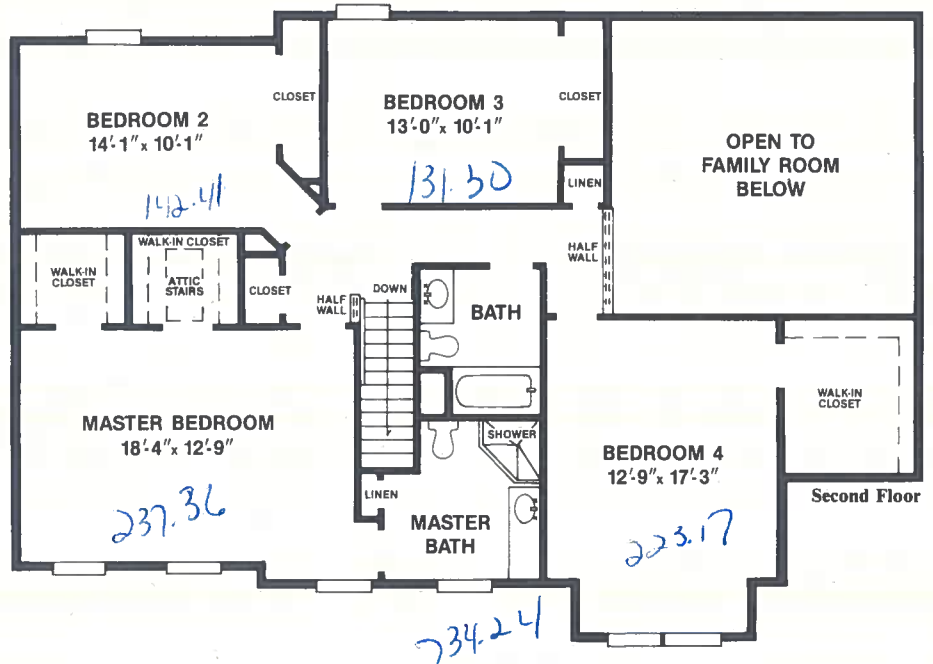
Searching for a spacious new home with powerful appeal? Then consider the captivating Carlyle IV which is available in three dynamic exterior styles. Inside are a multitude of sensational features such as elegant living and dining rooms and a country-sized kitchen including island counter, breakfast nook and bay window. Across the half wall divider is a huge family room featuring a dramatic vaulted ceiling and patio. Of course the expansive owner's suite is one of the Carlyle IV's biggest attractions featuring two wardrobe closets and private bath.

The Carlyle IV

4 bedrooms, 2½ baths,
dramatic family room,
2 car garage

Living space 2,370 sq. ft.
Garage 425 sq. ft.
Total 2,795 sq. ft.

General descriptions, artistic illustrations and floor plan dimensions may vary in precise detail from actual plans and specifications. ©1994, Terruce Corp.



by **Sam Paparone** INC.

The Avignon



The Avignon Provincial



The Avignon Traditional



The back view of the Avignon
(showing the triple/transom window combination in the family room)

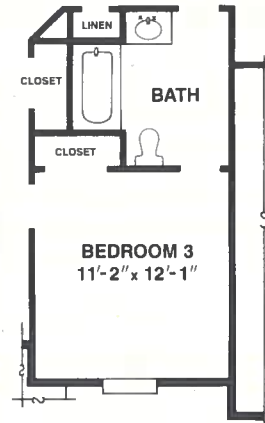
This impressive residence affords you all the comfort and luxury of a two story home in a step-saving and convenient one level design. Avignon's elegance begins in the grand, towering foyer. The adjoining dining and living rooms are beautifully window-scaped creating a dramatic open area for entertaining. Equally captivating are the spacious master suite and the expansive family room with its soaring ceiling and custom styled triple/transom window combination (see rear elevation). The Avignon is available in two magnificent styles - provincial and traditional.

The Avignon

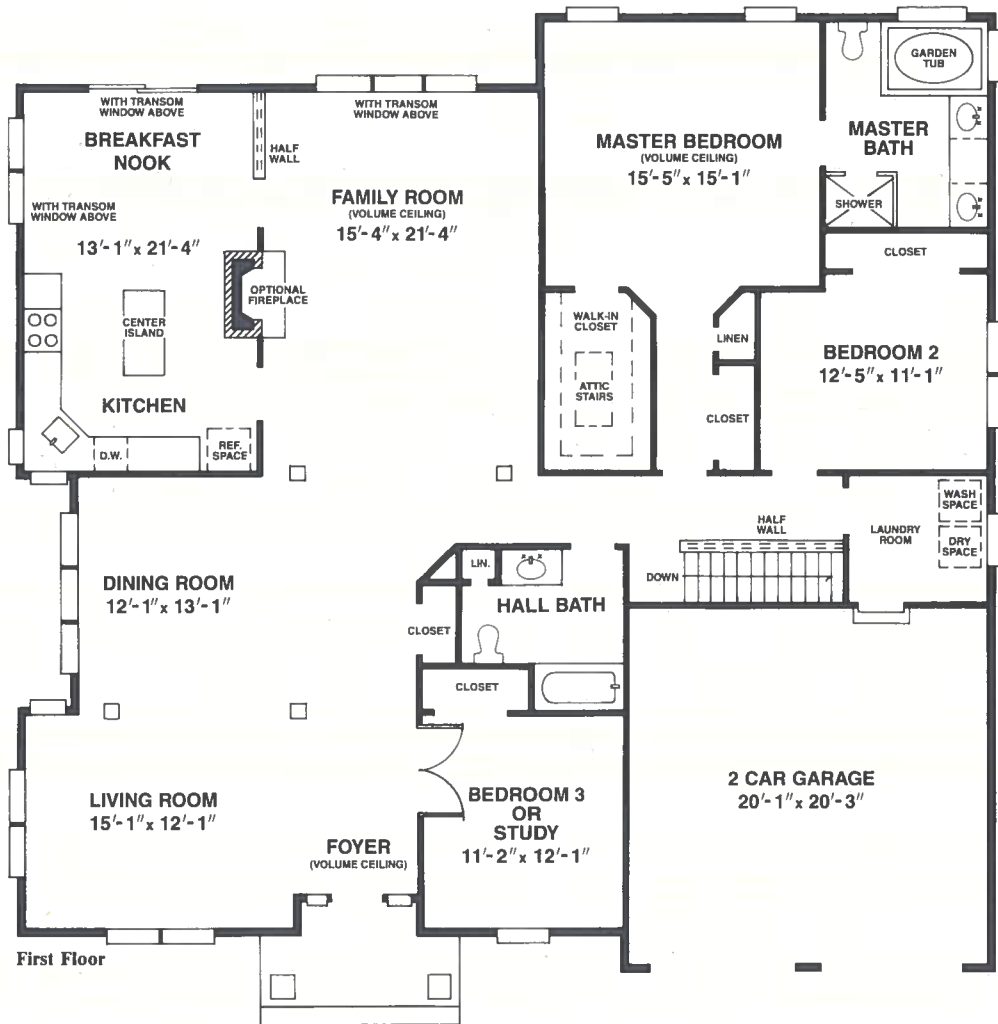
3 bedrooms or 2 bedrooms and study,
2 full baths, family room, 2 car
garage, basement

Living space2,258 sq. ft.
Garage418 sq. ft.
Total2,676 sq. ft.

General descriptions, artistic illustrations and floor plan dimensions may vary in precise detail from actual plans and specifications.
©1996, Terruce Corp.



Alternate Plan For Bedroom 3
(replaces study and hall bath)

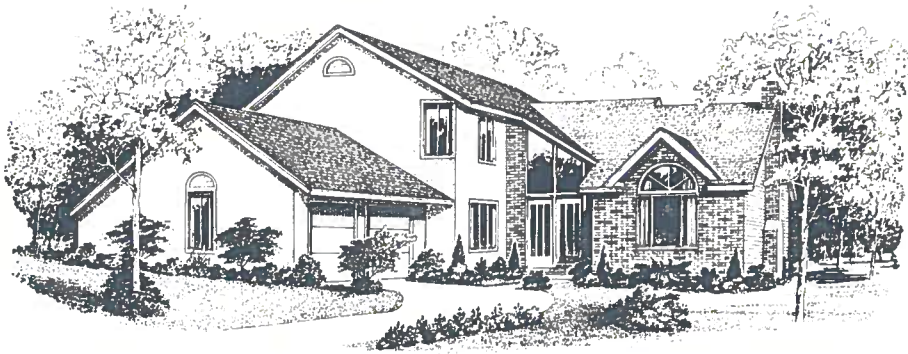


by **Sam Paparone** INC.

The Rider Elite



The Rider Elite



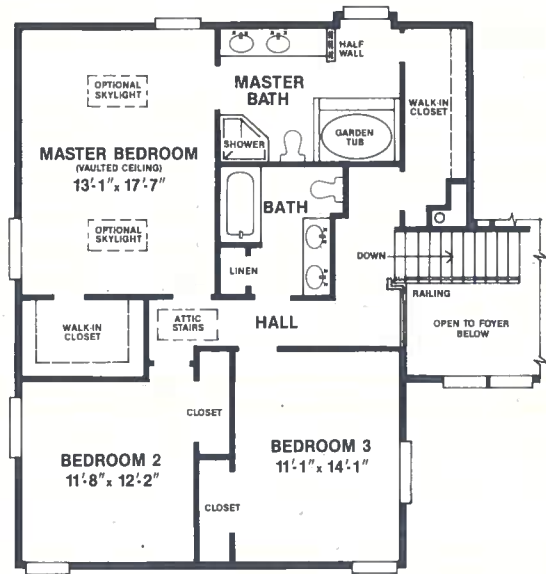
The Rider Elite
(with optional brick front)

Contemporary styling creates the Rider Elite's unique custom designs. A vaulted entry makes a grand first impression. Just off the foyer, the living room is flooded with natural light from windows at each end of the room. A separate study is ideal as an entertainment room, library or hobby zone. Additionally, a spacious family room, an elegant dining room and two car garage complement the first floor plan. Upstairs, the master suite with vaulted ceiling has two large closets, garden tub and separate shower. See how innovation makes the Rider Elite an exciting residence.

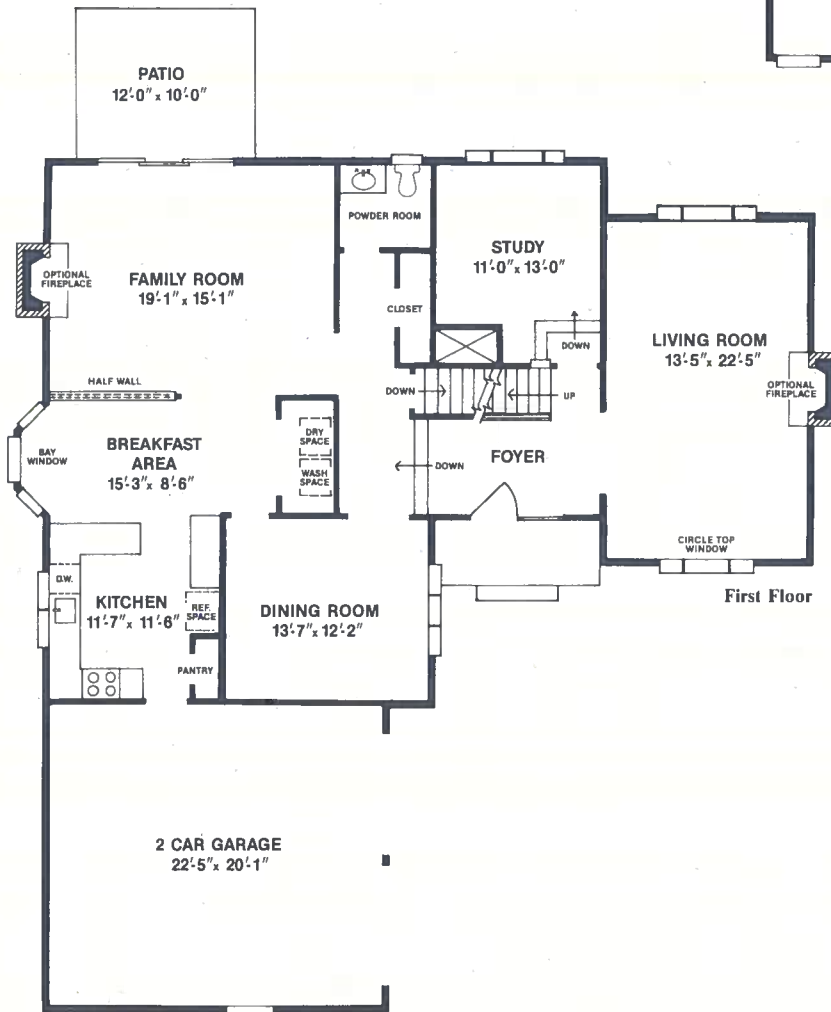
The Rider Elite

3 or 4 bedrooms, 2½ baths,
family room, 2 car garage

Living space2,610 sq. ft.
Garage430 sq. ft.
Total3,040 sq. ft.



Second Floor



First Floor



Optional 4th Bedroom

General descriptions, artistic illustrations and floor plan dimensions may vary in precise detail from actual plans and specifications. ©1994, Terruce Corp.

by **Sam Paparone** INC.

The Ashford



The Ashford Traditional



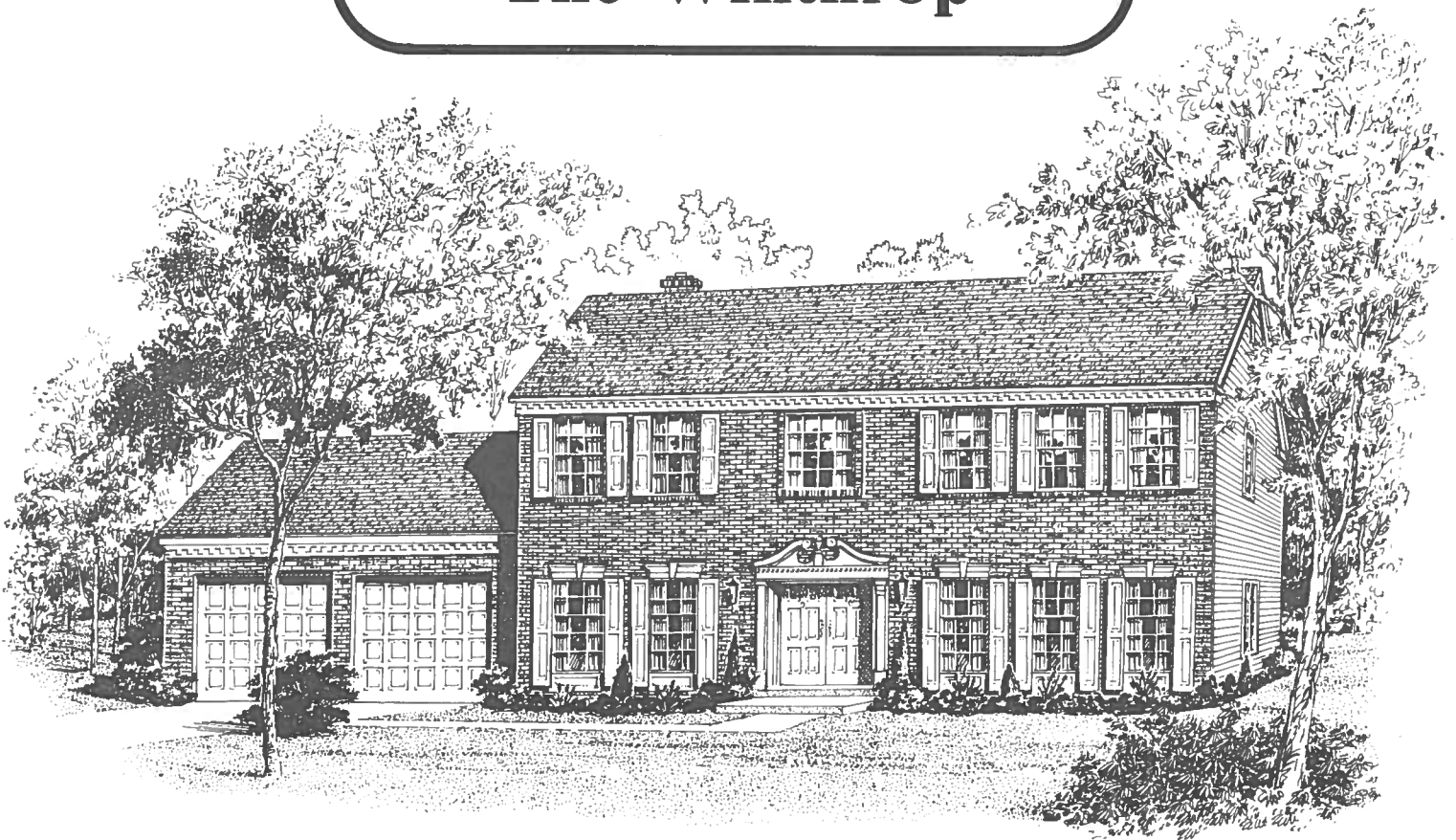
The Ashford Grand



The Ashford Federal

There are many appealing reasons to move up to the Ashford. Space! Drama! Custom class features! Distinctive styling! It all begins in the impressive two story foyer with a grand staircase and balcony overlook. A private study is another welcome addition. Most move up buyers long for larger living and dining rooms. The Ashford provides these in grand style. Other first floor bonuses are 9' ceilings, spacious kitchen with island counter and a huge family room featuring a soaring two story ceiling. Highlighting the second floor is a grand bedroom suite including double door entrance, an immense closet and a lavish, private bath with double bowl sink and garden tub. Count up the reasons and you'll be convinced. The Ashford has everything you want in a move up residence.

The Winthrop



The Winthrop Federal



The Winthrop Grand



The Winthrop Traditional

The Winthrop, reminiscent of stately Early American homes, lends grace to its dramatic interior, beginning with the entrance. Use of nine foot ceilings and unique window design and placement enhances the home's inviting nature. Formal oversized living and dining rooms are designed for maximum entertaining comfort and convenience. An expansive kitchen, including center island and breakfast nook, is enhanced by optional skylights. A three car, side entry garage is optional. Four superb bedrooms are located upstairs. The design is distinguished by a master suite featuring a cathedral ceiling, unique curved walls and master bath with a platform tub. The Winthrop's luxurious details create a captivating world of elegance waiting to be explored.

The Winthrop

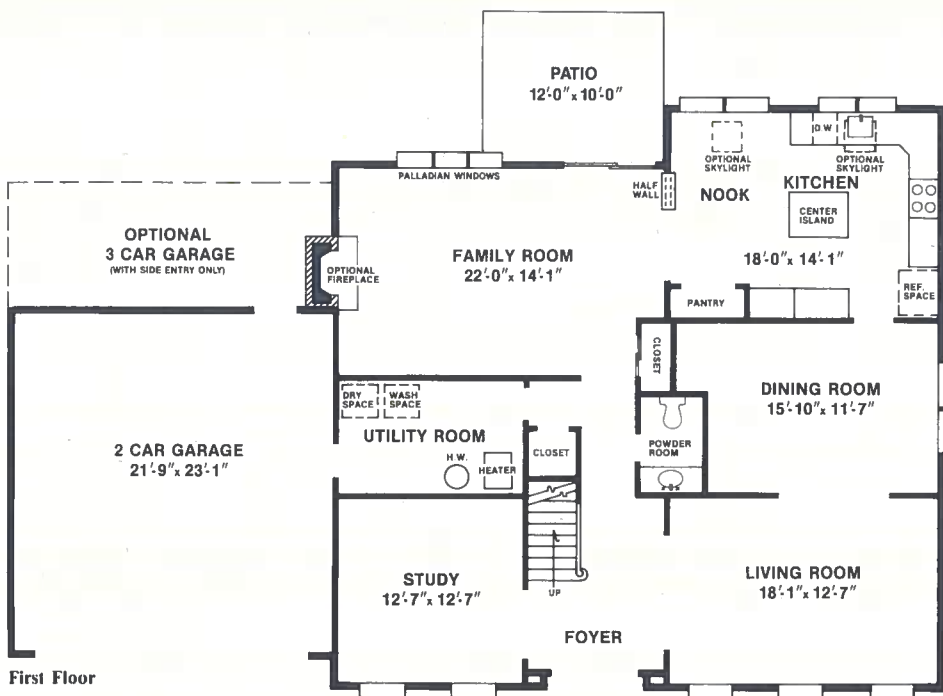
4 bedrooms, 2½ baths,
family room, den, 2 or 3
car garage

Living space2,850 sq. ft.
Garage510 sq. ft.
Total3,360 sq. ft.

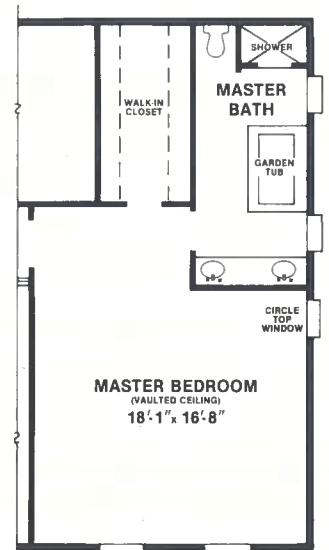
General descriptions, artistic illustrations and floor plan dimensions may vary in precise detail from actual plans and specifications. ©1994, Terruce Corp.



Second Floor



First Floor



Winthrop Grand Master Suite

by **Sam Paparone** INC.

The New Hope



The New Hope Provincial



The New Hope Traditional

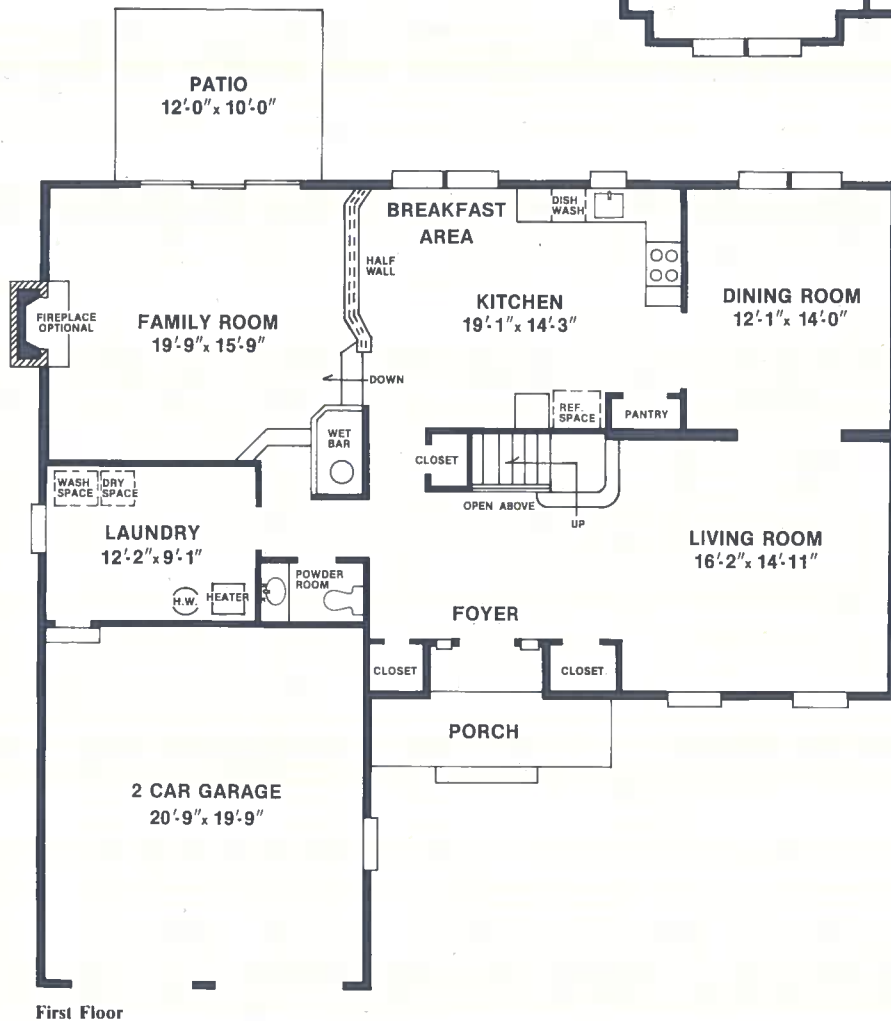
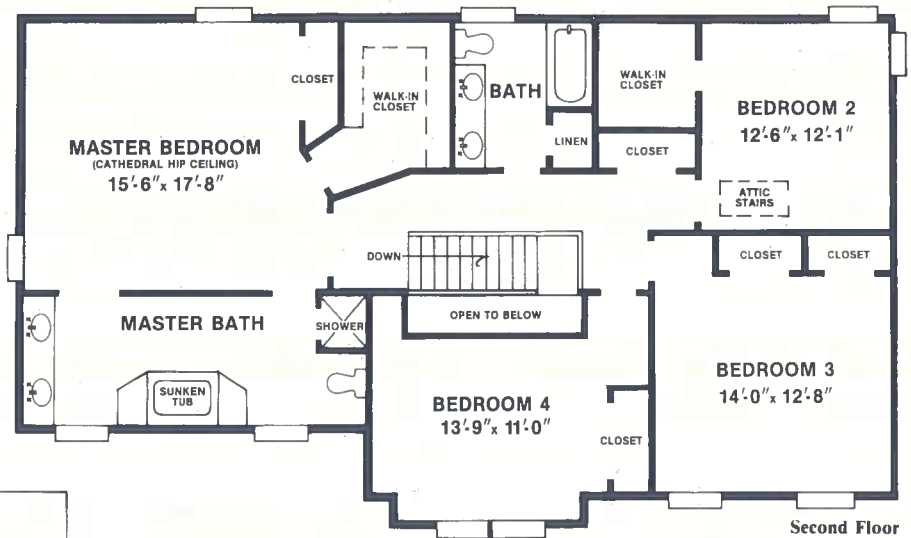
The appealing designs of the New Hope combine the best of traditional styling with contemporary ideas to create the latest in fashionable living. Once inside the foyer, one feels a sense of symmetry and balance within each room. Artistic use of space and window placement allows for maximum enjoyment from the living and dining rooms. The clean lines of the spacious, well appointed kitchen give way to the sunken family room, featuring a wet bar and patio. Highlighting the upstairs is a breathtaking master suite featuring a cathedral hip ceiling and sumptuous bath. With its tasteful blend of style and grace, the New Hope is truly a home of distinction.

The New Hope

4 bedrooms, 2½ baths,
family room, 2 car garage

Living space2,850 sq. ft.
Garage412 sq. ft.
Total3,262 sq. ft.

General descriptions, artistic illustrations and floor plan dimensions may vary in precise detail from actual plans and specifications. ©1994, Terruce Corp.



by **Sam Paparone** INC.

The Normandy



The Normandy



The Normandy Provincial

Drama and luxury highlight the European styled Normandy. Step inside the two story foyer and you'll be impressed by the openness, accented by the circular oak staircase and balcony. The formal living room leads to an elegant dining room enhanced by an angled bay window. Drawing your attention to the sunken family room are sliding glass doors to the patio, circle top windows and an optional fireplace. A large, sunny kitchen features a center island, breakfast nook and bay window. Upstairs, the luxurious master suite includes a vaulted ceiling and room sized closet. Come realize your dreams in the Normandy.

The Crofton



The Crofton Traditional



The Crofton Colonial



The Crofton Provincial

Beyond the dramatic entrance, past the stately living and dining rooms, lies the heart of this distinctive home where family and friends will gather for daily activities and relaxation. The breakfast area and the kitchen flow directly into the family room which creates the feeling of one continuous space. An optional fireplace is offered. Upstairs, the incredible master bedroom suite showcases a huge walk-in closet and a spacious master bath including a soaking tub. An added bonus to the Crofton's second floor is a dramatic study that overlooks the soaring entry foyer. This exceptional Crofton residence offers three impressive exterior designs and a host of endless amenities. It must be seen to be believed.

The Oxford



The Oxford Provincial



The Oxford Traditional



The Oxford Georgian

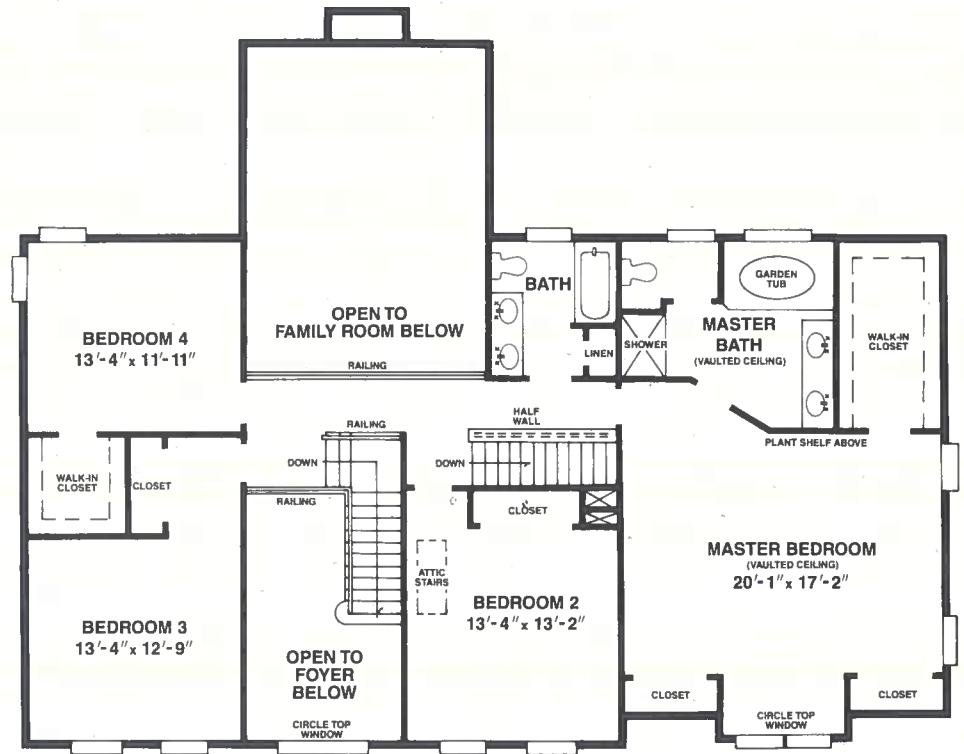
A signature feature of this captivating Oxford design is its towering front entry. Transom and radial windows rise above the door creating stately elegance in each of three magnificent exterior designs ... and this is just the beginning! An impressive two story foyer leads into the Oxford's sensational showpiece ... a magnificent, soaring family room dressed with transom windows. To the left is a private den or study featuring a formal double door entrance. Also adjoining the family room is the country-sized, center island kitchen with breakfast nook and convenient back staircase. A handy butler's pantry, with plentiful cabinets, is just one of many popular kitchen amenities. Equally sumptuous is the spectacular master suite featuring a volume ceiling and private bath including soaking tub. Three additional bedrooms are exceptionally spacious and include abundant closet space.

The Oxford

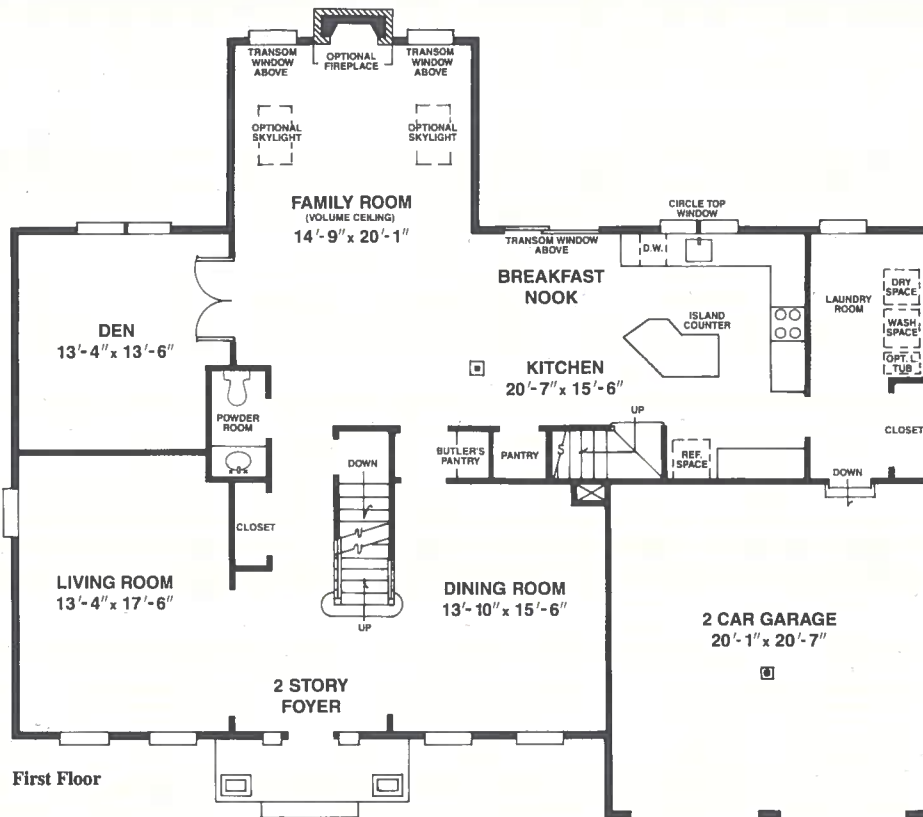
4 bedrooms, 2-1/2 baths, soaring family room, den / study, center island kitchen, back staircase, 2 car garage

Living space 3,171 sq. ft.
 Garage 425 sq. ft.
 Total 3,596 sq. ft.

General descriptions, artistic illustrations and floor plan dimensions may vary in precise detail from actual plans and specifications. © 1997, Terruce Corp.



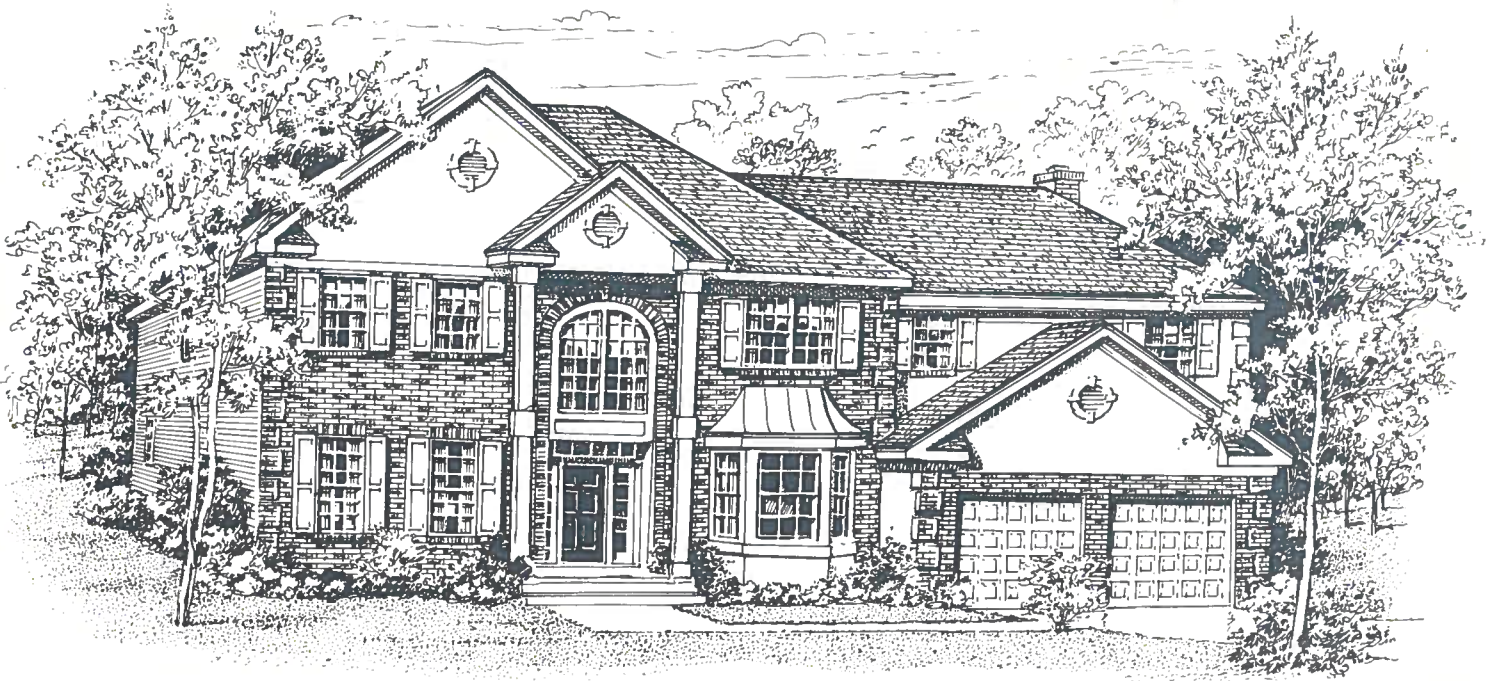
Second Floor



First Floor

by **Sam Papparone** INC.

The Stoneleigh



The Stoneleigh Traditional



The Stoneleigh Provincial



The Stoneleigh Georgian

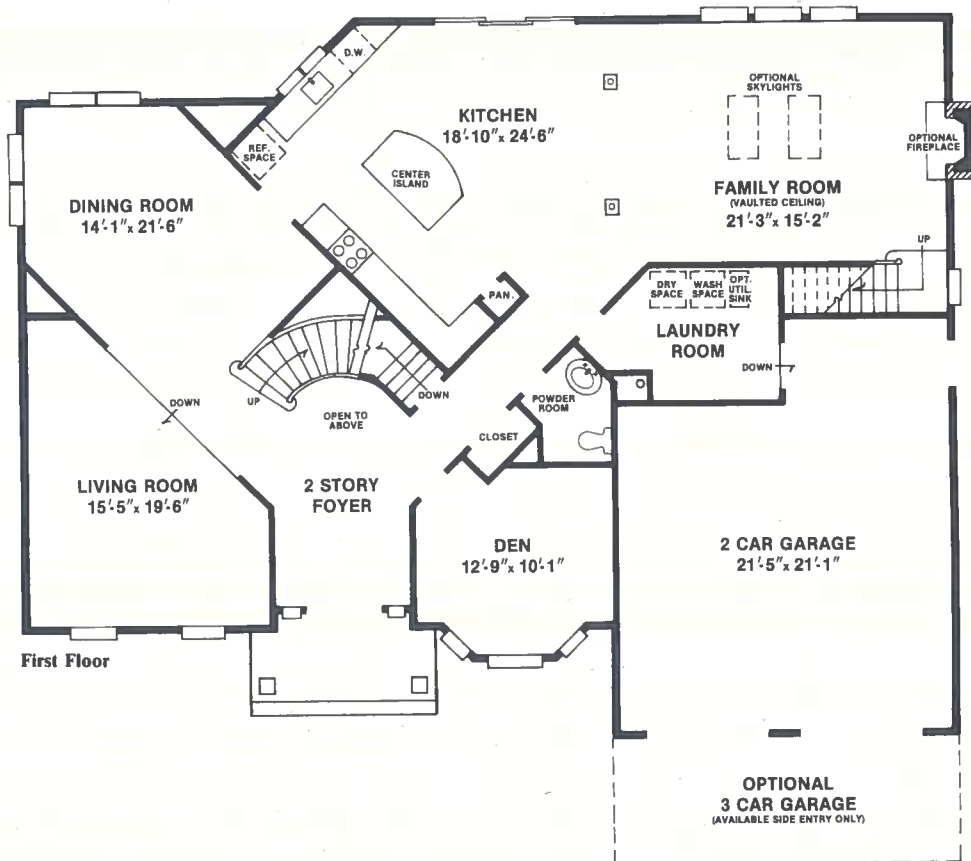
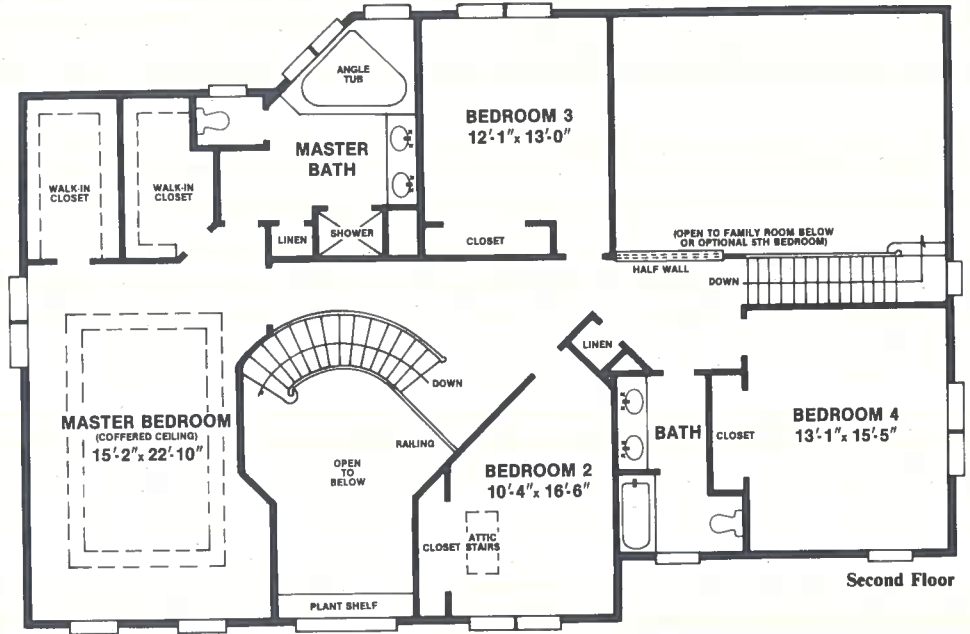
The Stoneleigh is the perfect enticement to move up to an exceptional residence. It offers a choice of three stately exterior styles each creating impressive curbside appeal. Inside is a radical departure from conventional plans featuring custom styling rotated curiously on an angle, presenting excitement at every turn including nine foot ceilings. Among the most popular features are the dramatic family room with vaulted ceiling, the expansive kitchen with center island, a rear staircase, the private den and a magnificent master suite and bath.

The Stoneleigh

4 or 5 bedrooms, 2½ baths,
two story family room,
den, rear staircase, 2 or 3
car garage

Living space3,462 sq. ft.
Garage497 sq. ft.
Total3,959 sq. ft.

General descriptions, artistic illustrations and floor plan dimensions may vary in precise detail from actual plans and specifications. ©1994, Terruce Corp.



by **Sam Paparone** INC.