

# Features of Your Tall Oaks Home

## WITHIN YOUR COMMUNITY

- Thoughtful site planning encompassing 125 homes on 80-plus acres
- Underground electric and telephone lines which protect the aesthetic beauty of the community landscape
- Professionally graded and seeded lots, including sodded front lawns
- Public water and sewer
- Concrete driveways, concrete sidewalks on both sides of tree lined streets, and concrete entrance walks
- Illuminated streets
- Easy access to Philadelphia, Atlantic City, and Delaware via Route 42, Atlantic City Expressway, New Jersey Turnpike, and I-295

## THROUGHOUT YOUR HOME

- Four spacious bedrooms including a master suite with master bath
- Large family room and formal dining room
- Formal entry foyer with two-story volume in most models
- Sunken family room or living room in most models
- Plush wall-to-wall carpeting in a wide choice of colors
- Vinyl flooring in kitchen, foyer, laundry room, and baths in a wide choice of designs
- Open wood railings on the main staircase
- Copper water lines throughout
- Decorator light fixtures
- Abundant closet space with vented wirerack shelving
- Laundry room with washer and dryer hookups
- Prewired for 3 telephone and 2 cable TV outlets
- Smoke alarms in every bedroom and hallway
- Convenient 2-CAR GARAGE
- **SOLID POURED FOUNDATION WALLS** in basement
- Frost-free hose bibs front and back
- Maintenance-free vinyl siding
- Above standard, 235 lb., self sealing roof shingles warranted for 25 years
- Colonial base trim throughout
- Lever set front entrance handle with dead bolt entry locks
- Aluminum gutters and downspouts

## DESIGNER KITCHENS

- State-of-the-art kitchen design
- Large breakfast-dinette area in all models
- Abundant custom crafted cabinetry
- Laminate counter tops in a choice of colors
- Self-cleaning oven
- Sound insulated dishwasher
- Matching range hood
- Garbage disposal
- Stainless steel sink with single lever faucet and sprayer
- No wax vinyl flooring

## LUXURIOUS BATHROOMS

- Two full baths and powder room in every home
- Sumptuous master bath with double vanity and elegant soaking tub standard in most models
- Mirrored medicine cabinets in all full baths

## ENERGY-EFFICIENT CONSTRUCTION

- Gas-fired hot air heating system with clock thermostat
- Comfortable **CENTRAL AIR CONDITIONING**
- Thermal insulated quality tilt-in vinyl windows with screens and grills
- Insulated, weather-stripped, steel entry door
- Above standard (R-30, 9 inch) ceiling insulation
- Above standard (R-13, 4 inch) exterior wall insulation
- Energy Saver 50-GALLON gas-fired water heater
- Exterior wall foundation sill sealer
- 200-AMP electrical service
- Front and rear waterproof exterior electrical outlet
- Exterior lights both front and rear, and between garage doors
- Solid **STEEL BEAM** construction
- Termite treatment certification

## QUALITY ASSURANCE AND WARRANTY

- R. W. C. ten year home warranty protection plan
- Pre-settlement orientation program
- -2 pre-settlement inspections

THE BIRCH III



ARTIST'S CONCEPTION. DETAILS MAY VARY.

THE BIRCH I



ARTIST'S CONCEPTION. DETAILS MAY VARY.

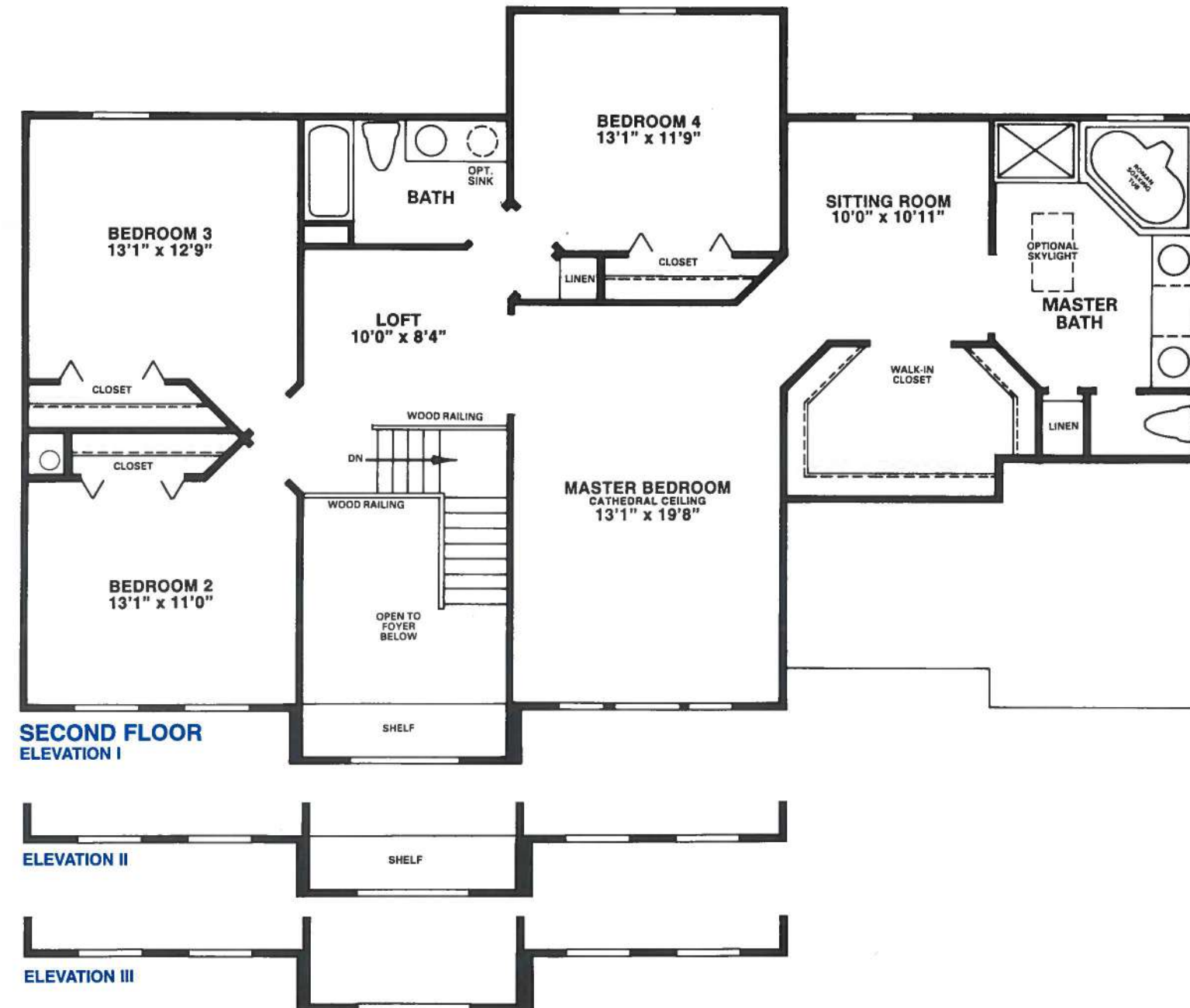
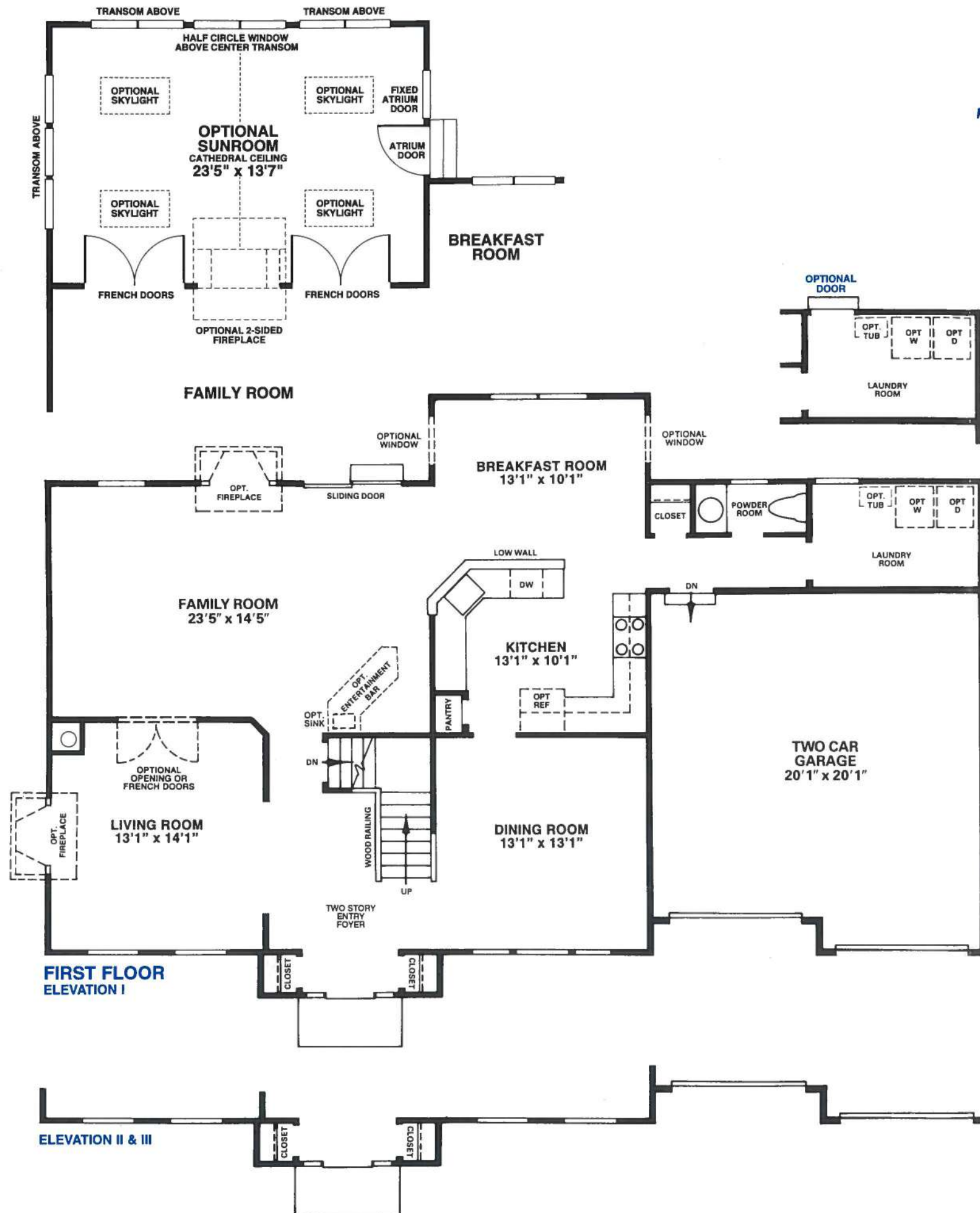
THE BIRCH II



ARTIST'S CONCEPTION. DETAILS MAY VARY.

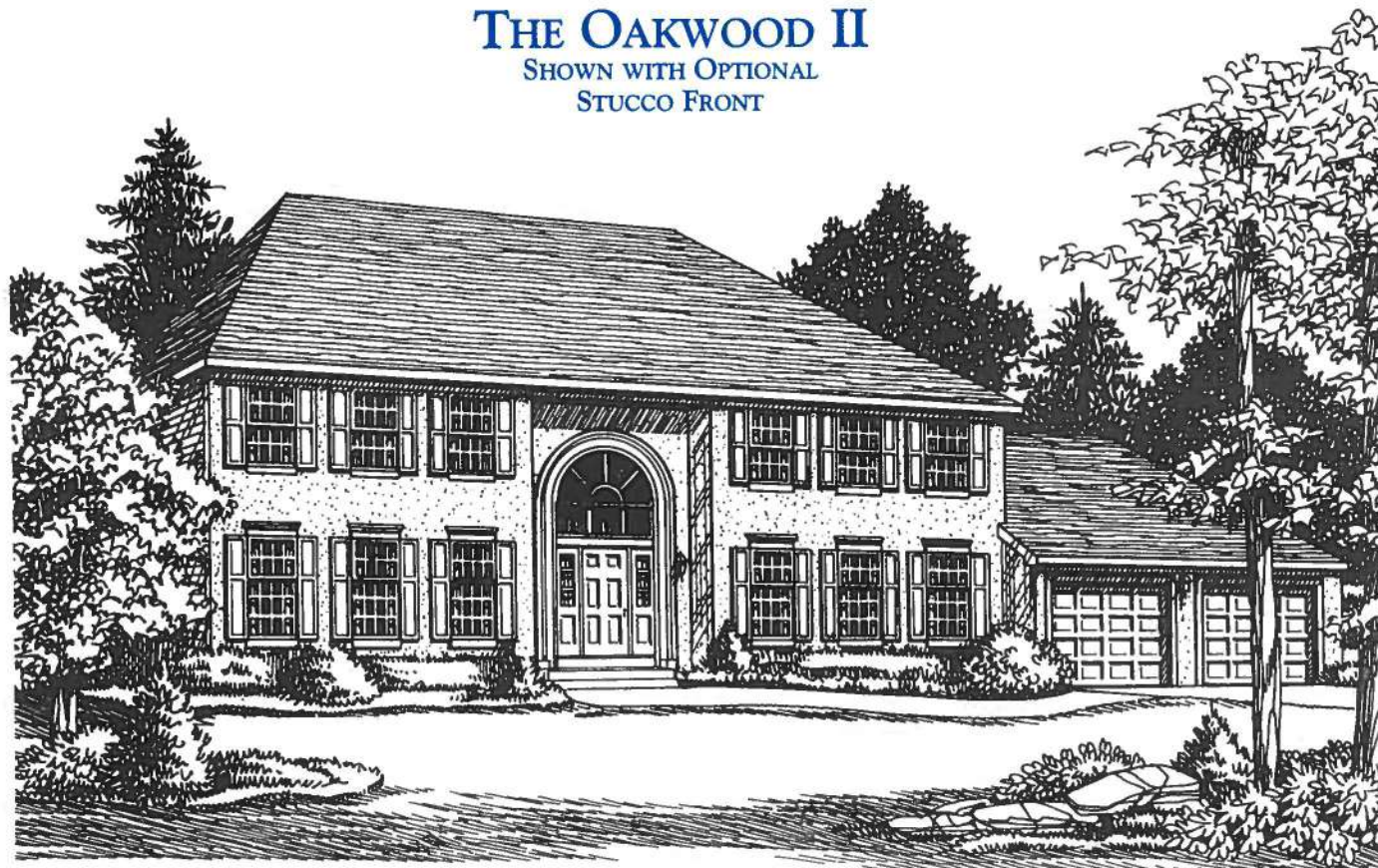


# THE BIRCH I, II & III



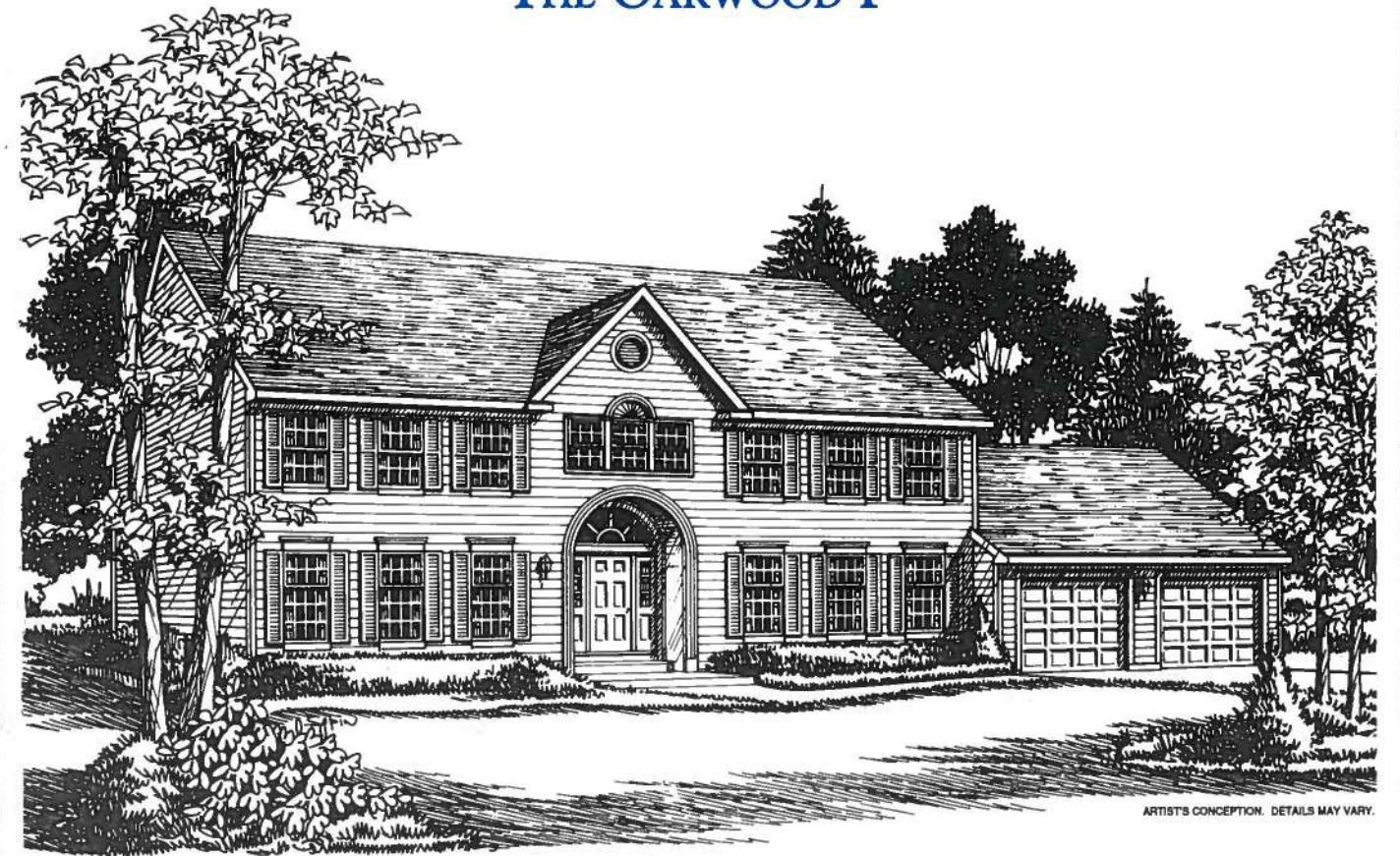
## OPTIONAL EXTERIOR

### THE OAKWOOD II SHOWN WITH OPTIONAL STUCCO FRONT



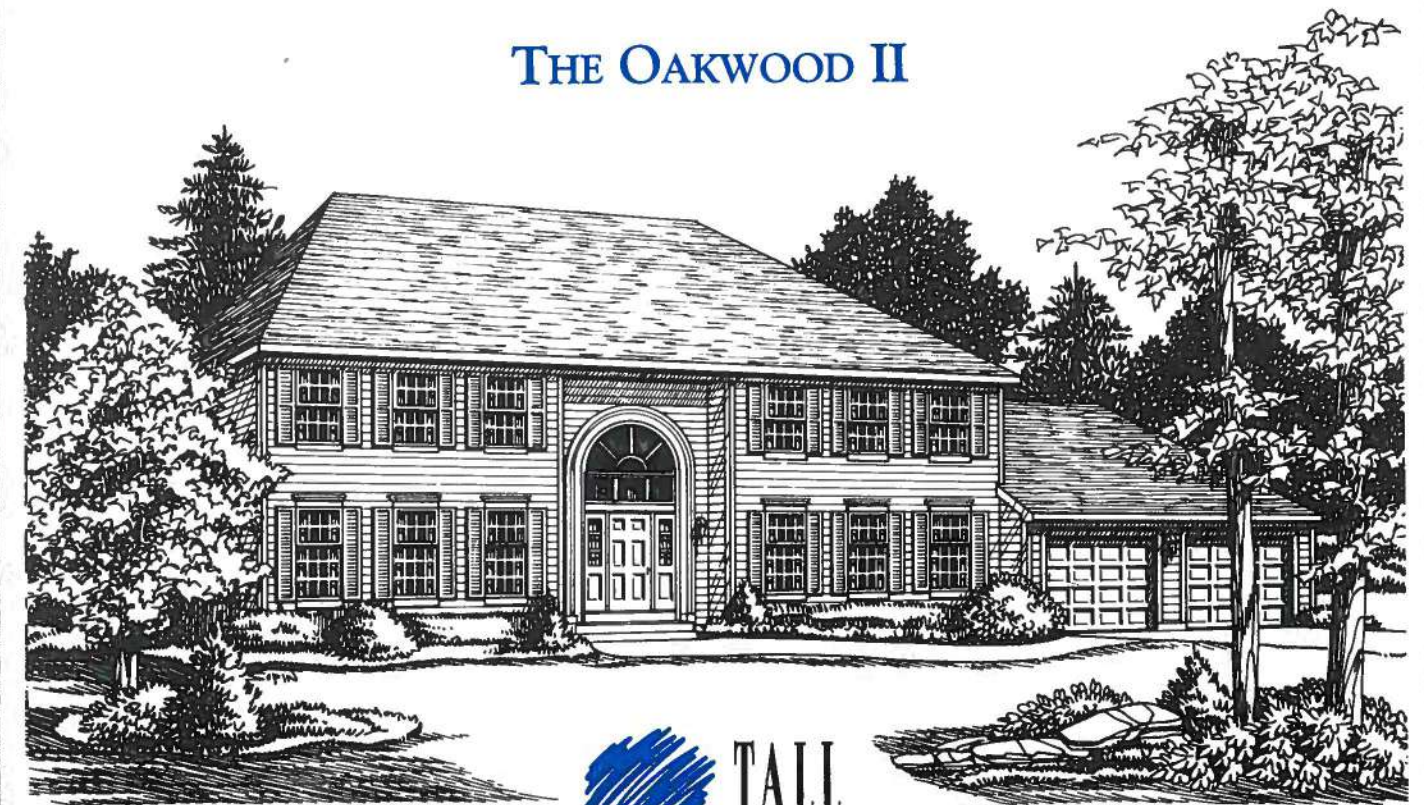
ARTIST'S CONCEPTION. DETAILS MAY VARY.

## THE OAKWOOD I



ARTIST'S CONCEPTION. DETAILS MAY VARY.

## THE OAKWOOD II

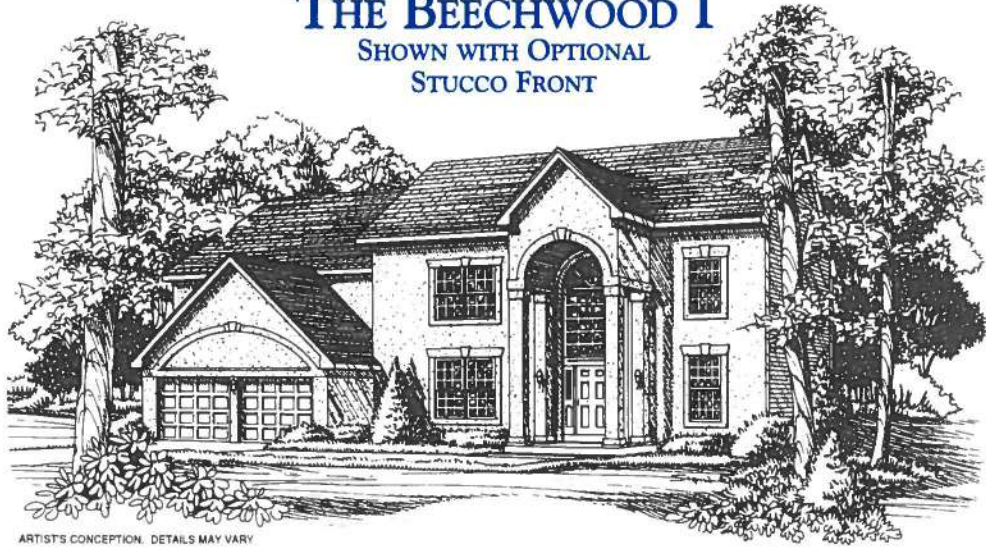


ARTIST'S CONCEPTION. DETAILS MAY VARY.



## OPTIONAL ELEVATIONS

### THE BEECHWOOD I SHOWN WITH OPTIONAL STUCCO FRONT



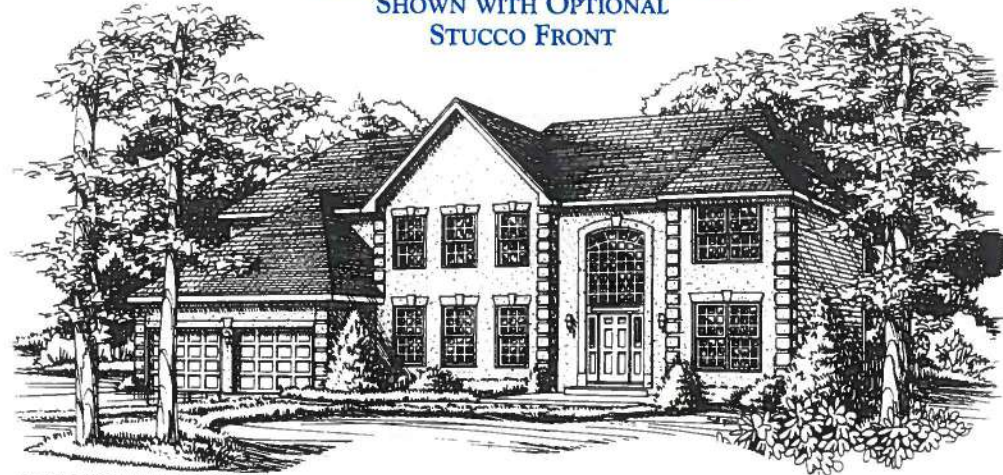
ARTIST'S CONCEPTION. DETAILS MAY VARY.

### THE BEECHWOOD II SHOWN WITH OPTIONAL BRICK FRONT



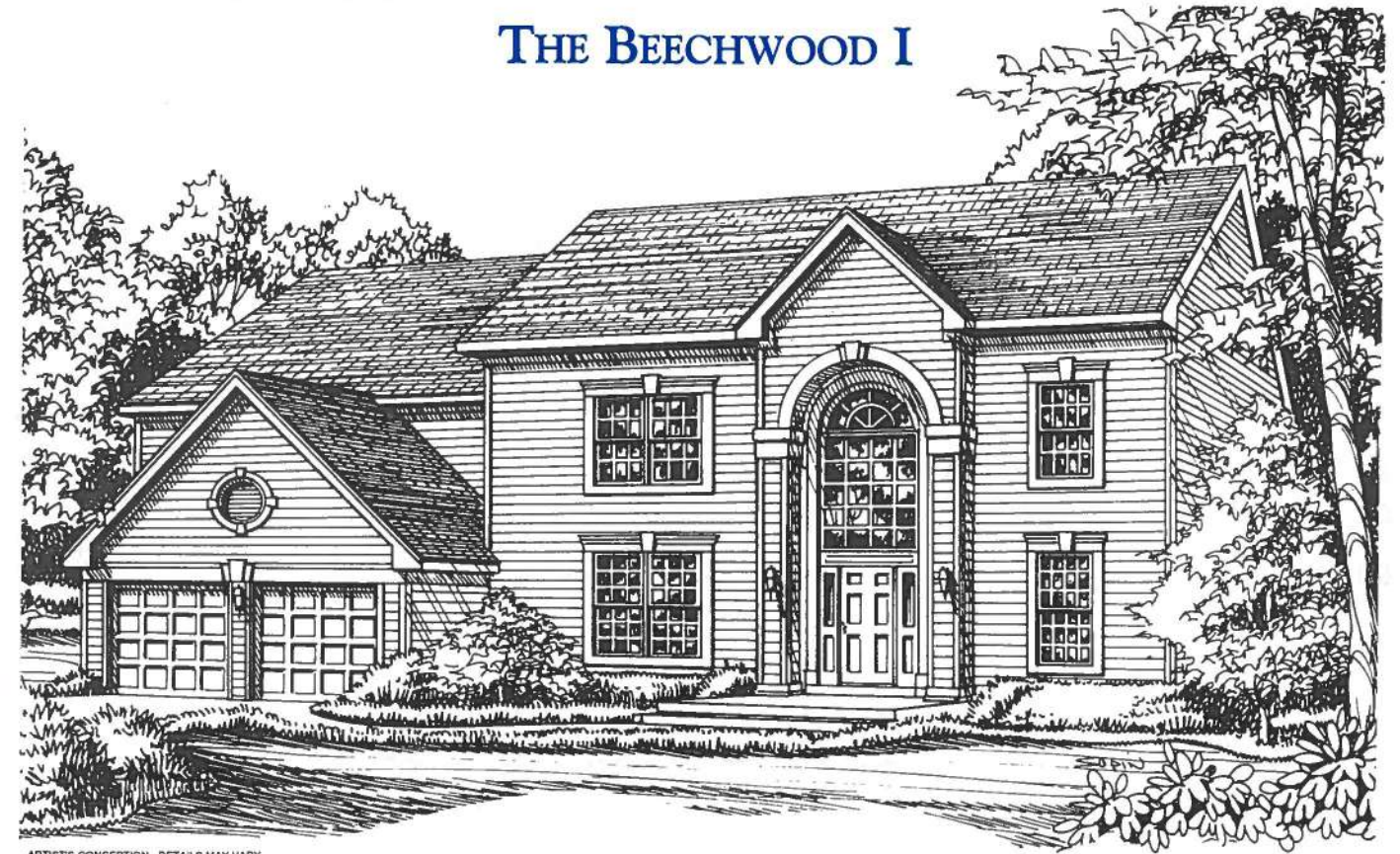
ARTIST'S CONCEPTION. DETAILS MAY VARY.

### THE BEECHWOOD II SHOWN WITH OPTIONAL STUCCO FRONT



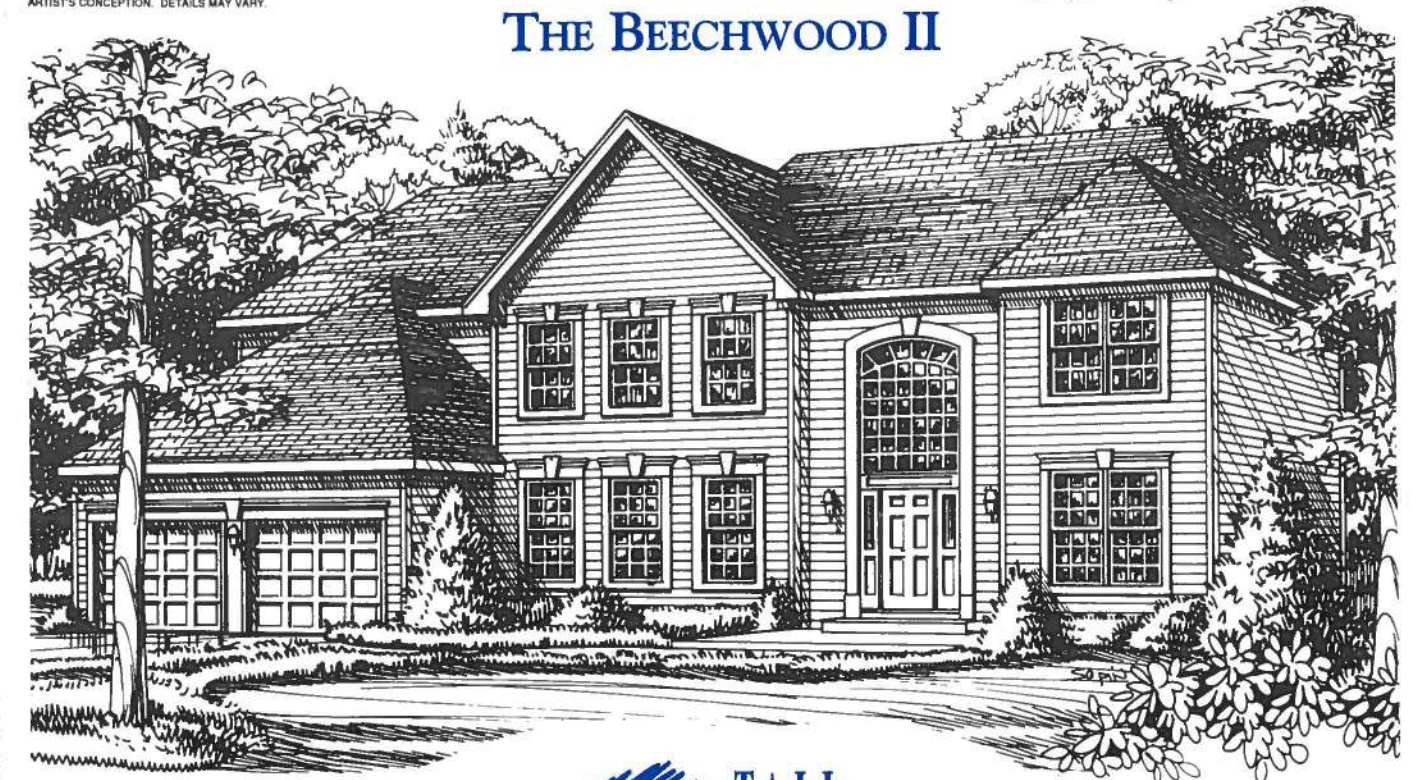
ARTIST'S CONCEPTION. DETAILS MAY VARY.

## THE BEECHWOOD I



ARTIST'S CONCEPTION. DETAILS MAY VARY.

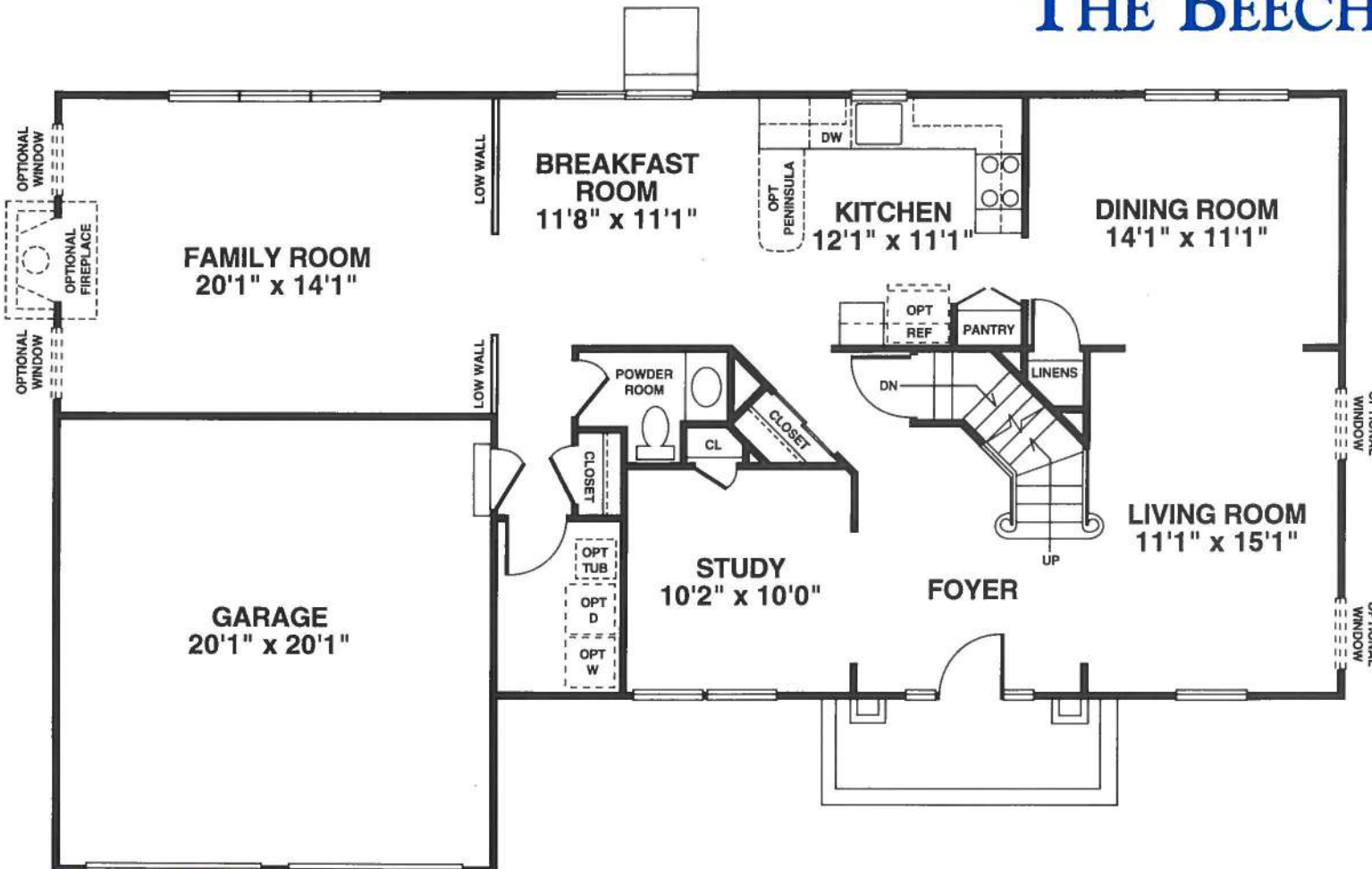
## THE BEECHWOOD II



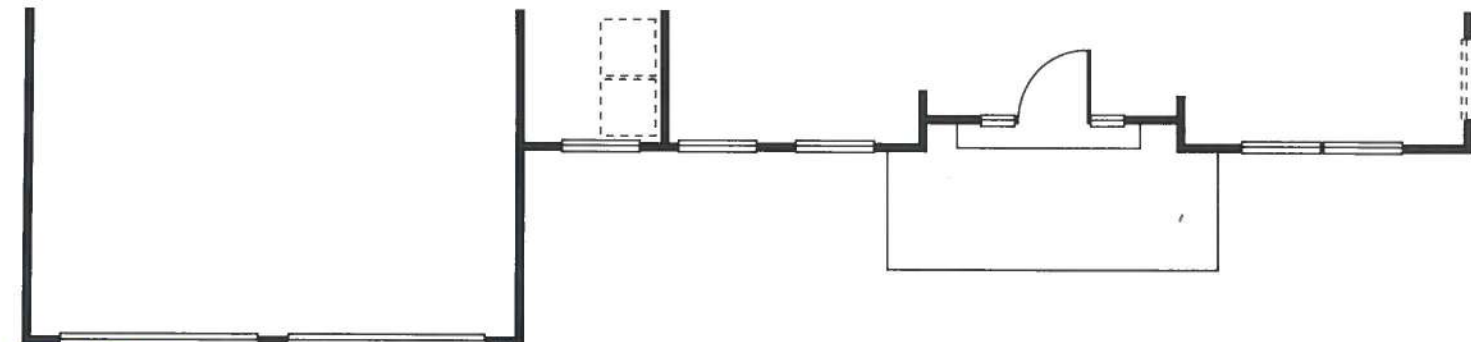
ARTIST'S CONCEPTION. DETAILS MAY VARY.



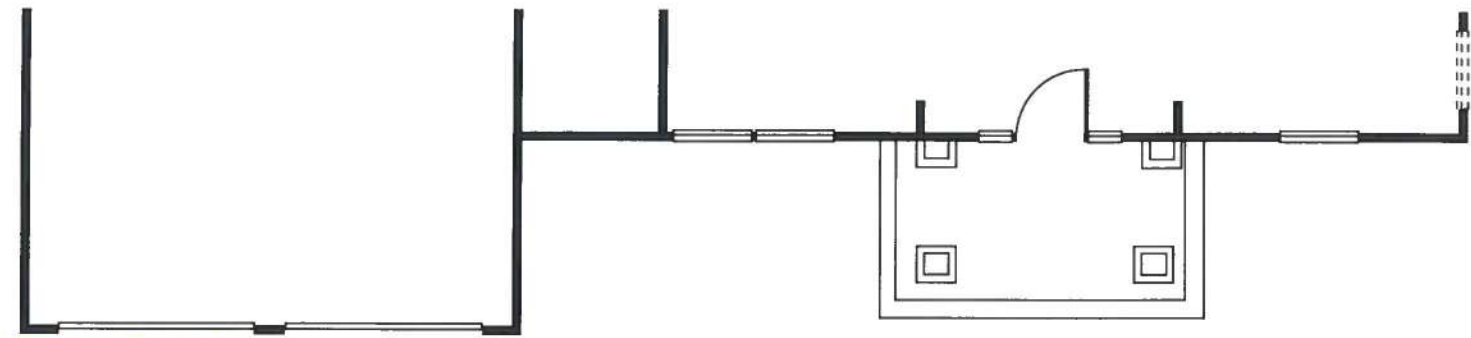
# THE BEECHWOOD I & II



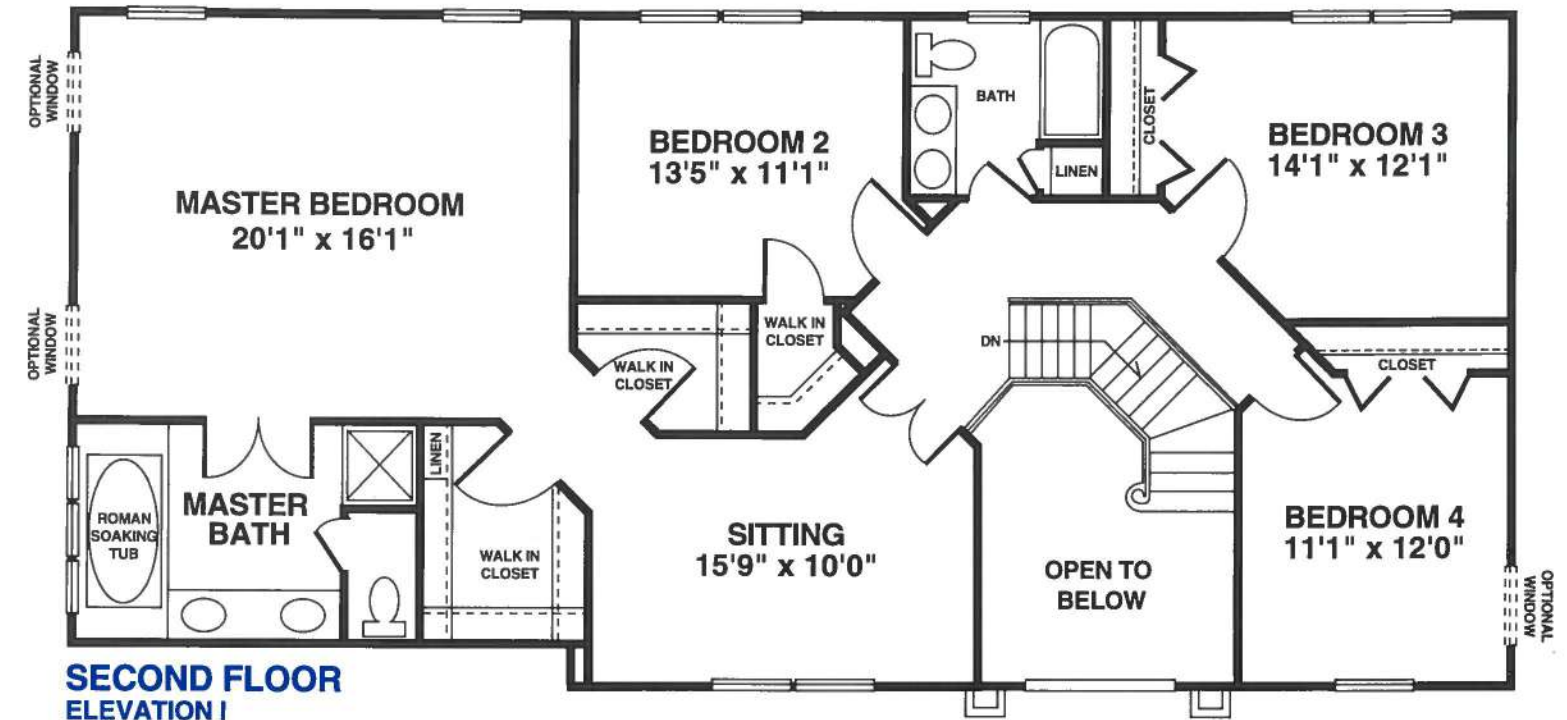
**FIRST FLOOR ELEVATION I**



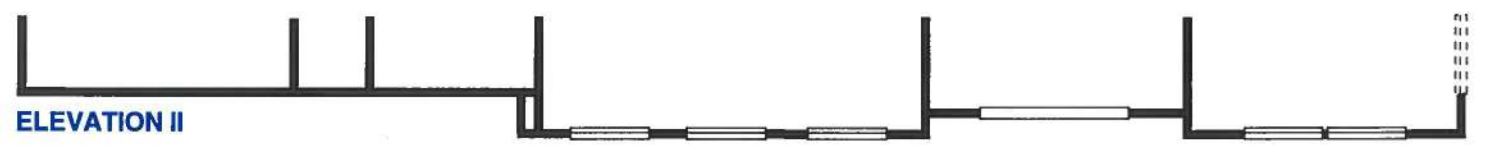
**ELEVATION II**



**FIRST FLOOR ELEVATION I - OPTIONAL STUCCO & PORCH**



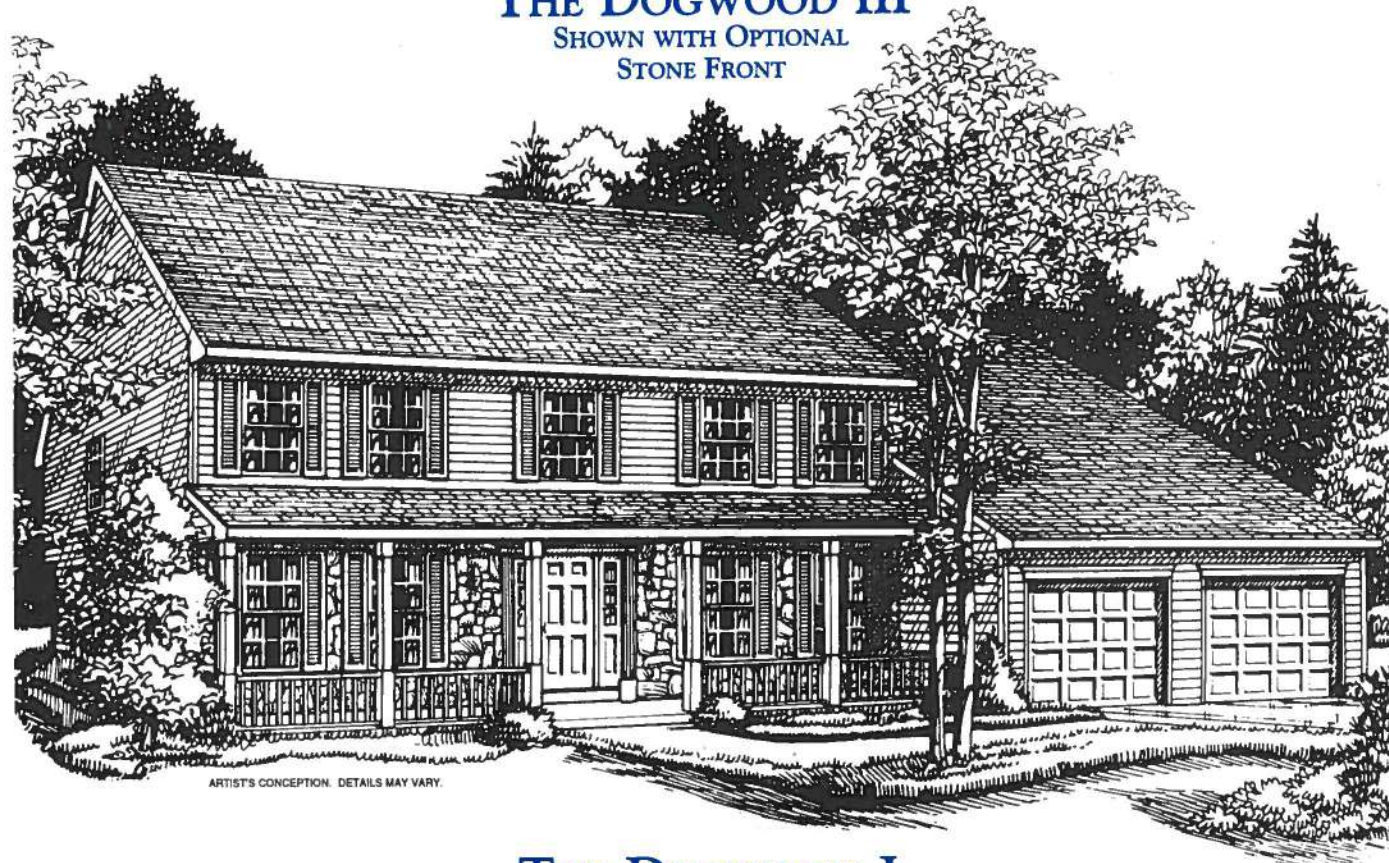
**SECOND FLOOR ELEVATION I**



**ELEVATION II**

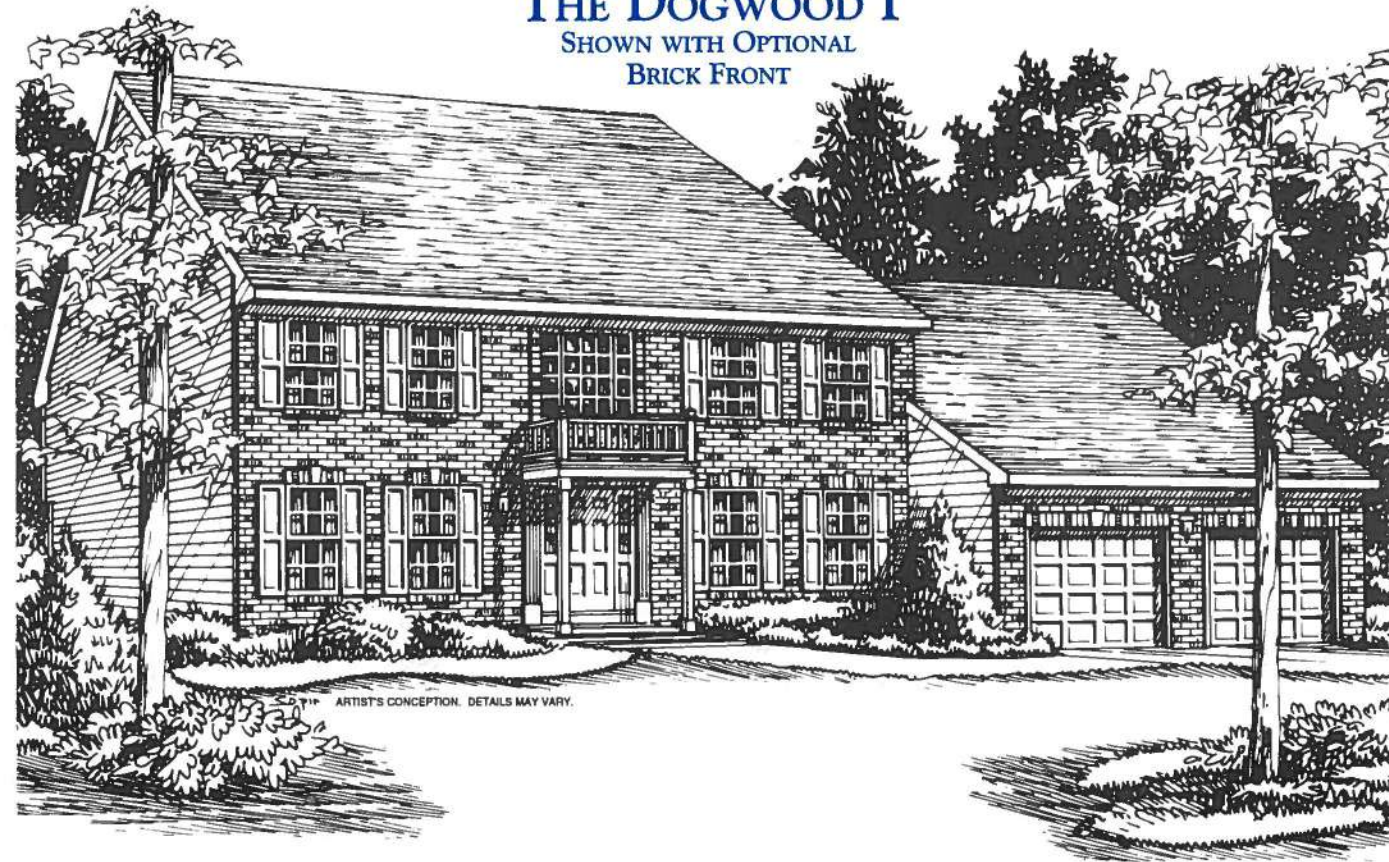
## OPTIONAL EXTERIORS

### THE DOGWOOD III SHOWN WITH OPTIONAL STONE FRONT



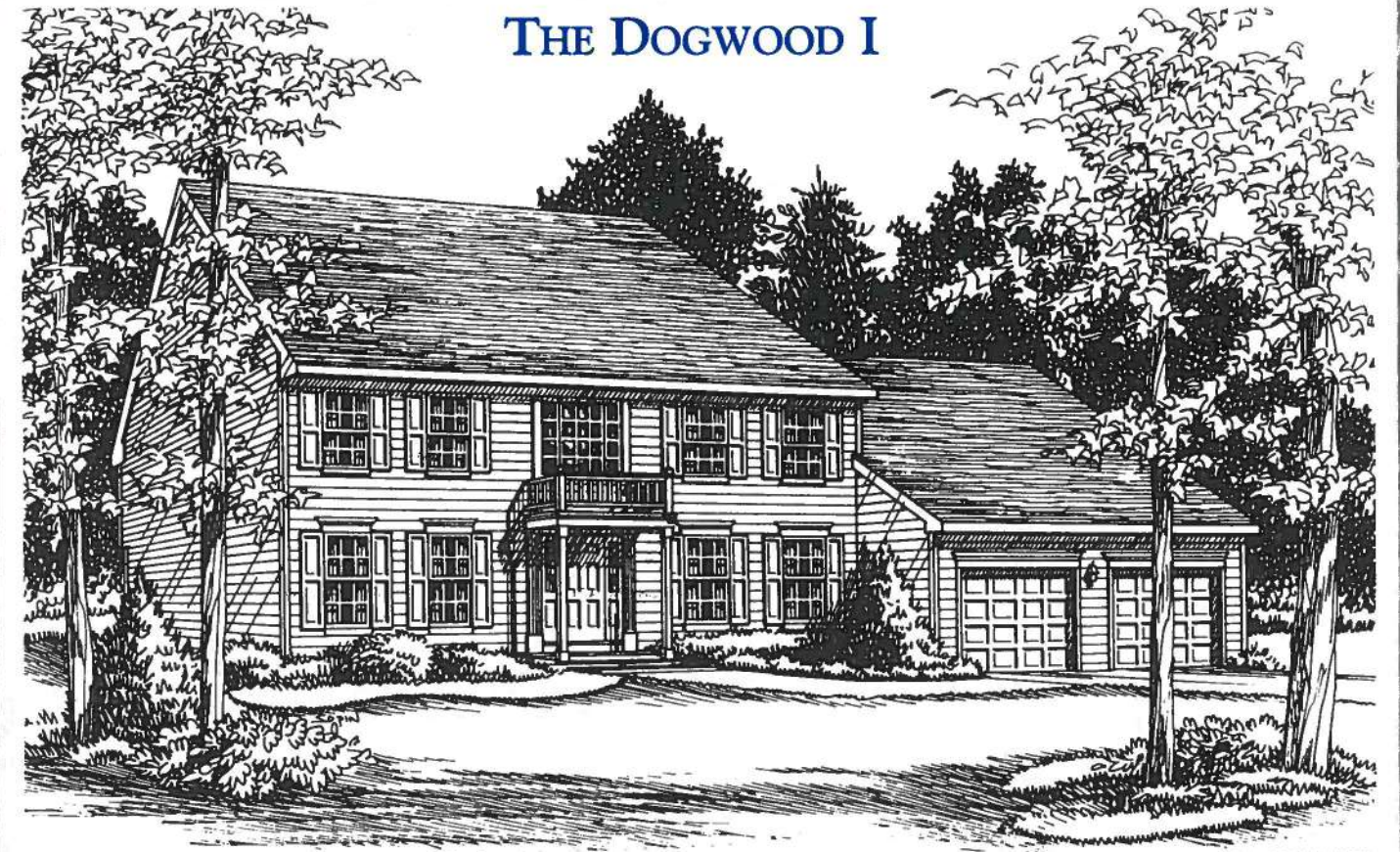
ARTIST'S CONCEPTION. DETAILS MAY VARY.

### THE DOGWOOD I SHOWN WITH OPTIONAL BRICK FRONT



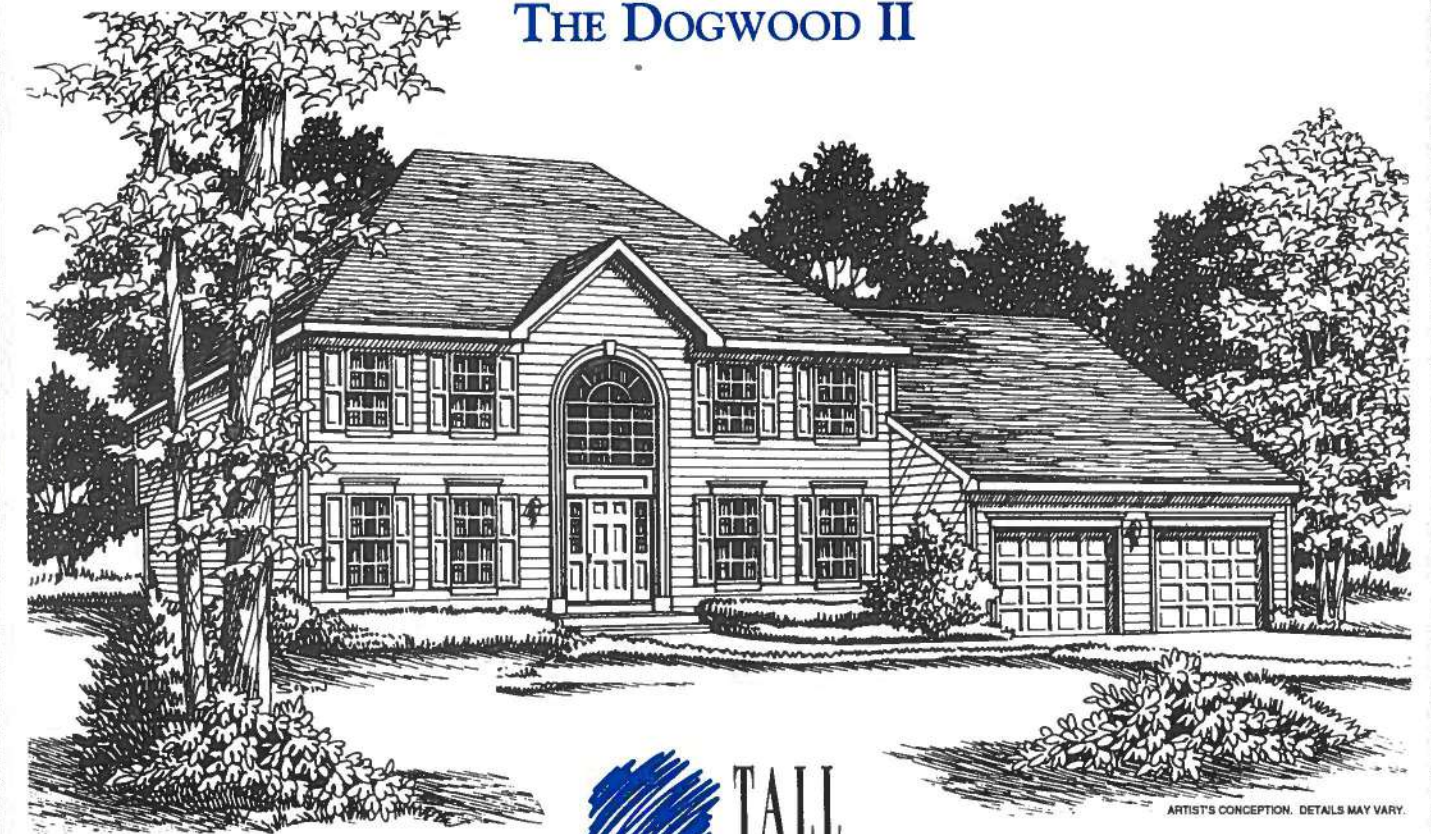
ARTIST'S CONCEPTION. DETAILS MAY VARY.

## THE DOGWOOD I



ARTIST'S CONCEPTION. DETAILS MAY VARY.

## THE DOGWOOD II

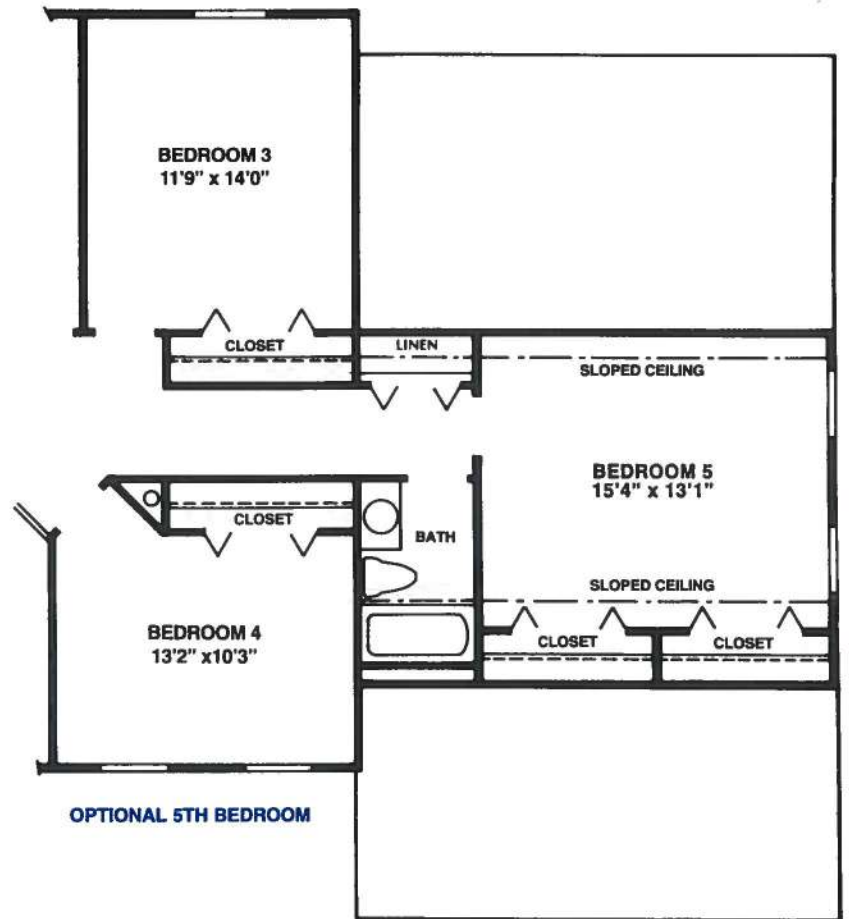
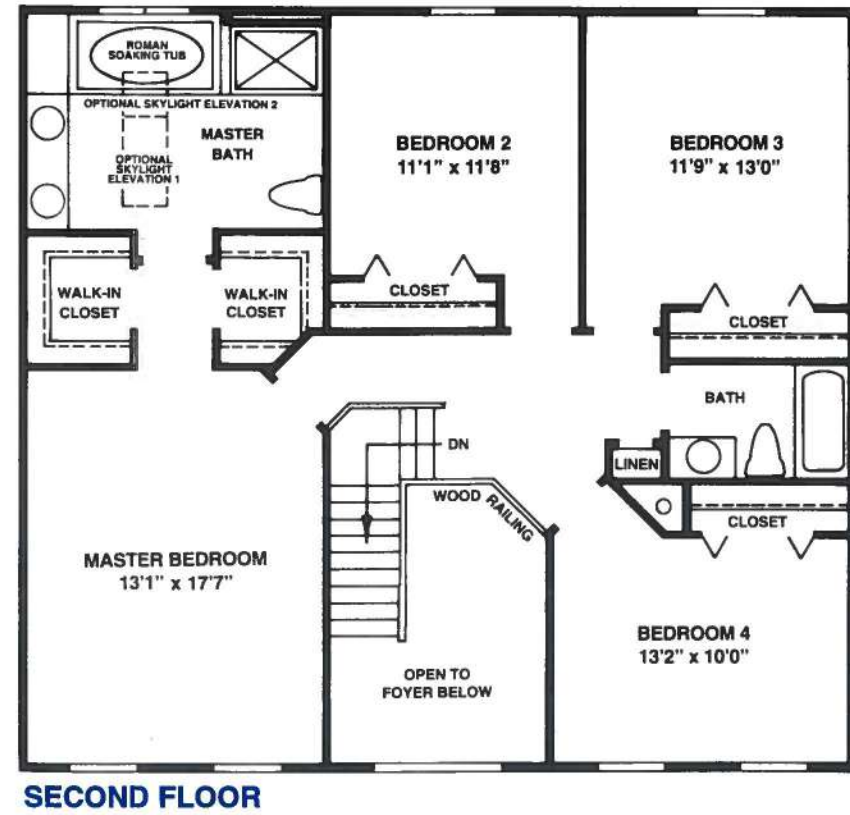
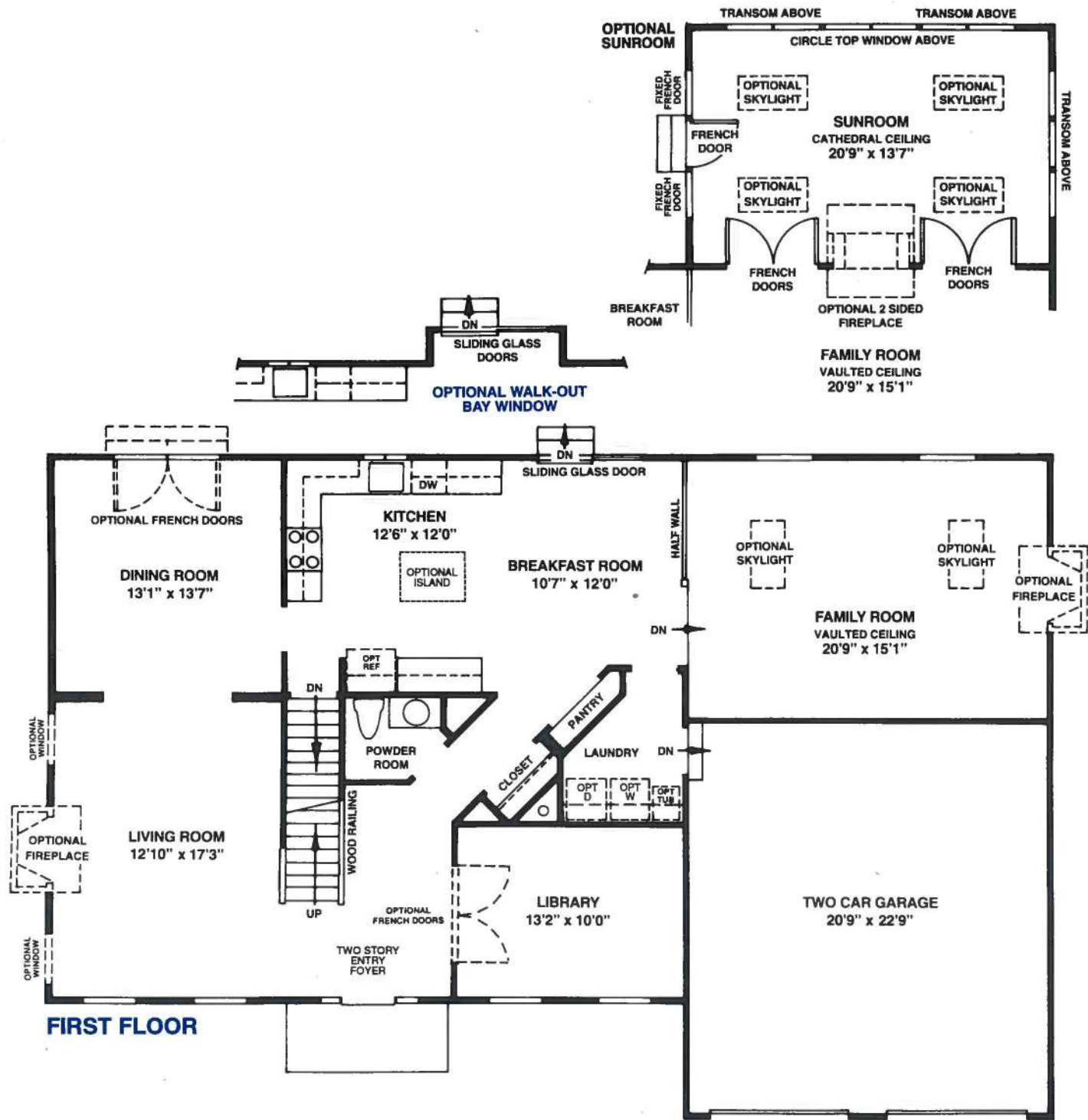


ARTIST'S CONCEPTION. DETAILS MAY VARY.

 TALL  
OAKS

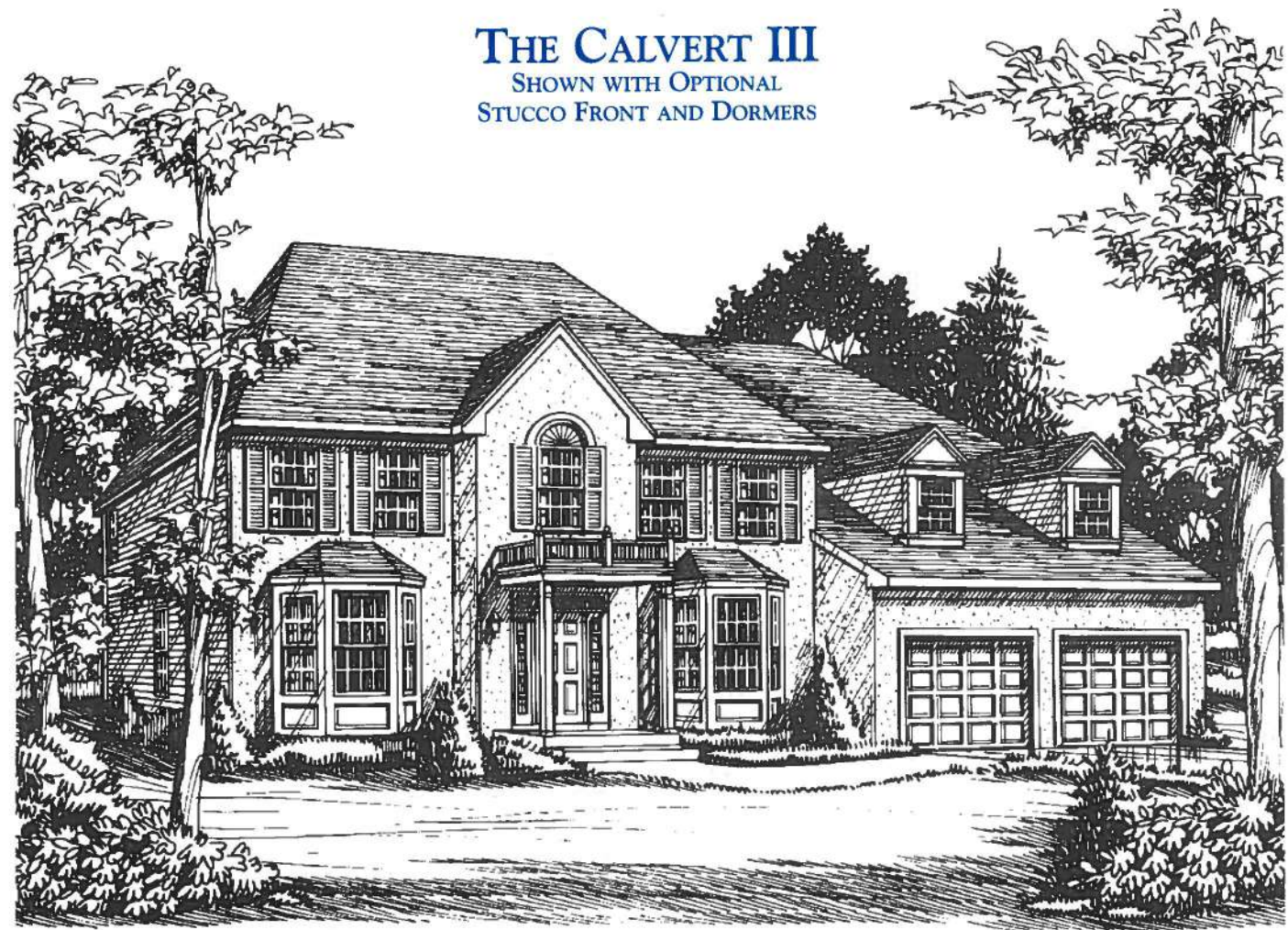


# THE DOGWOOD I, II & III



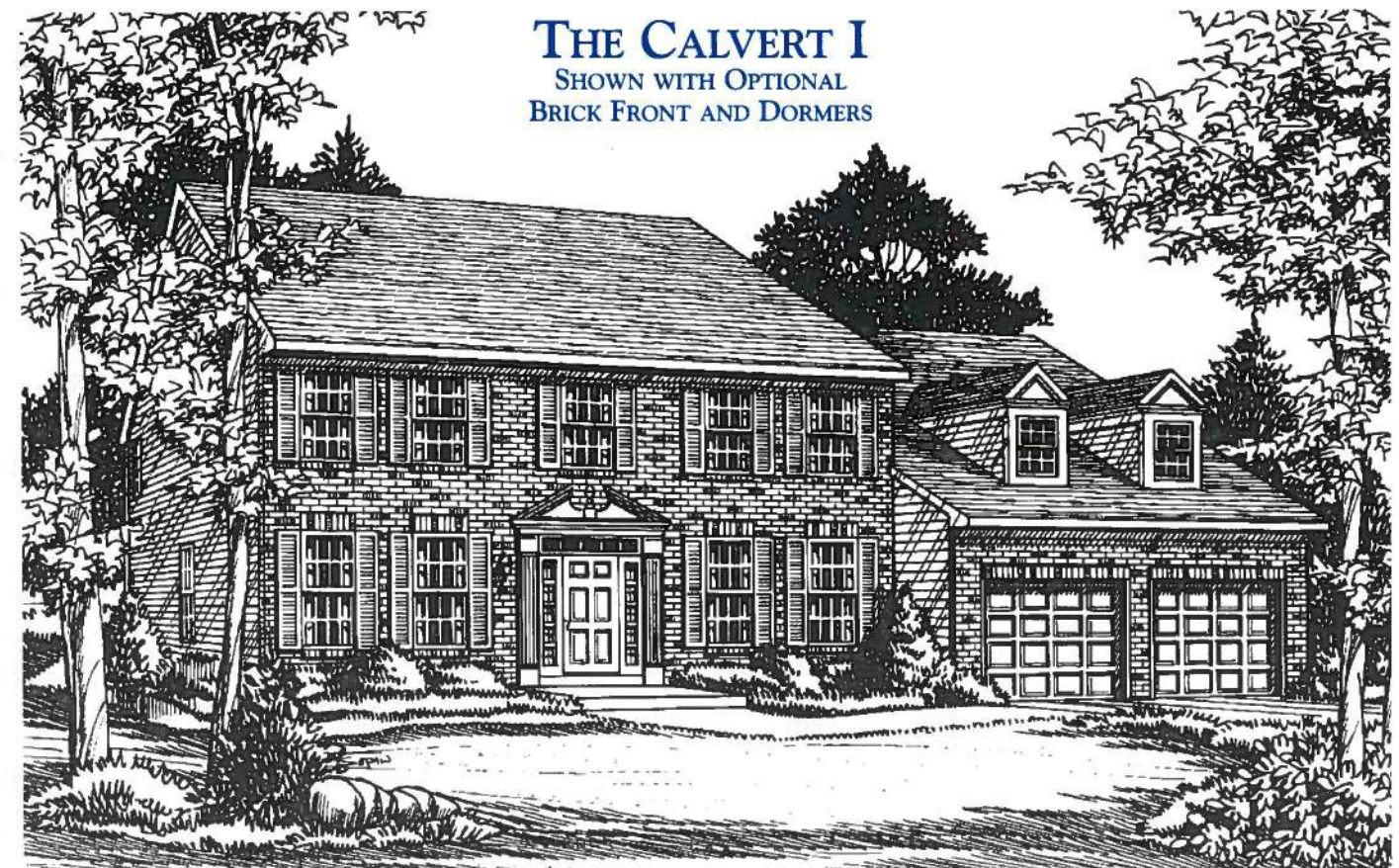


**THE CALVERT III**  
SHOWN WITH OPTIONAL  
STUCCO FRONT AND DORMERS



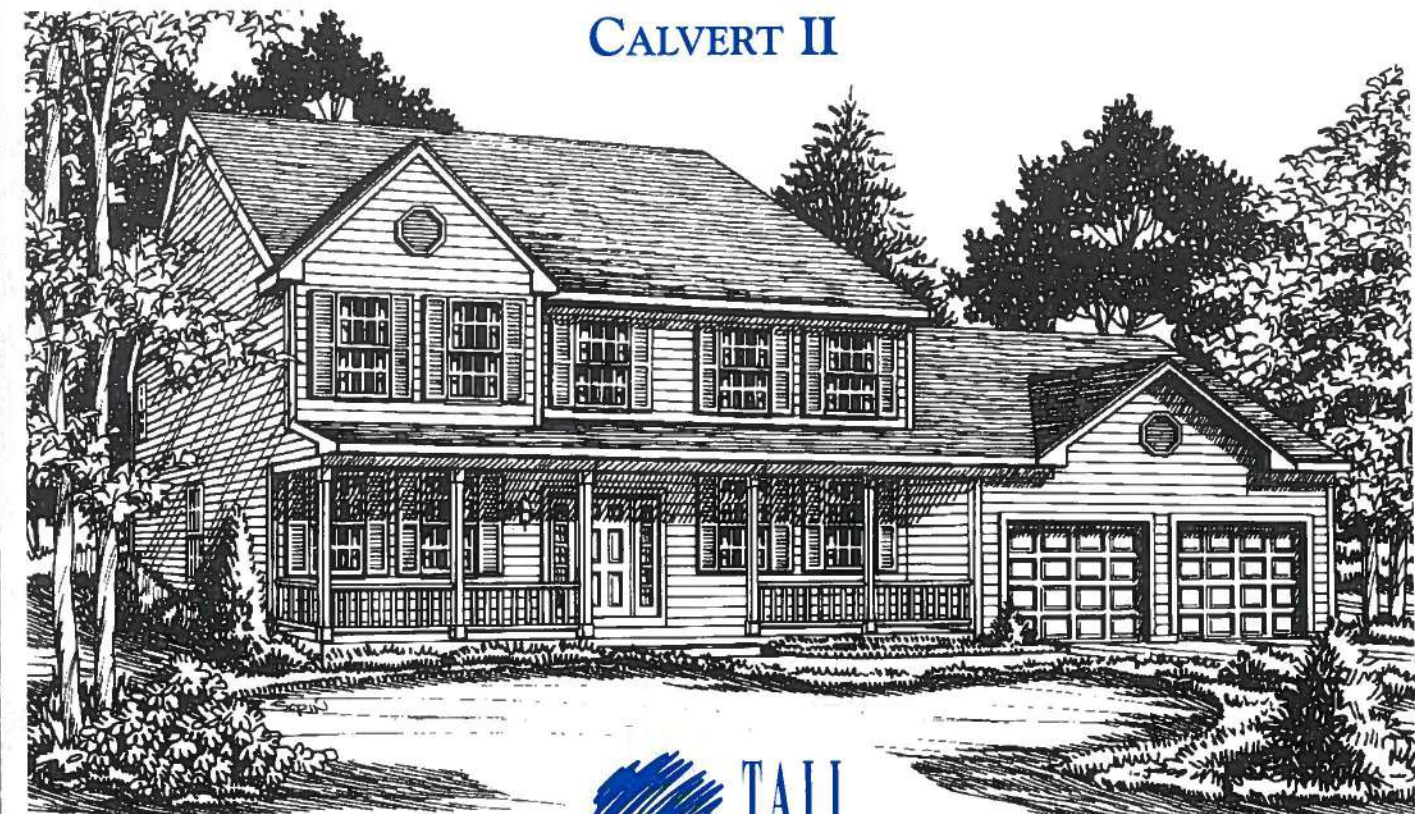
ARTIST'S CONCEPTION. DETAILS MAY VARY.

**THE CALVERT I**  
SHOWN WITH OPTIONAL  
BRICK FRONT AND DORMERS



ARTIST'S CONCEPTION. DETAILS MAY VARY.

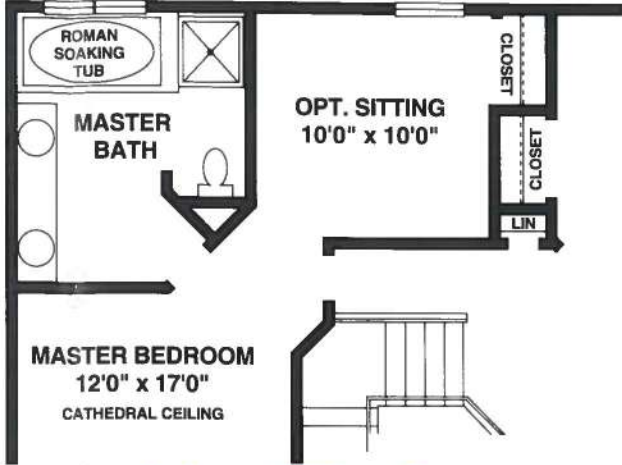
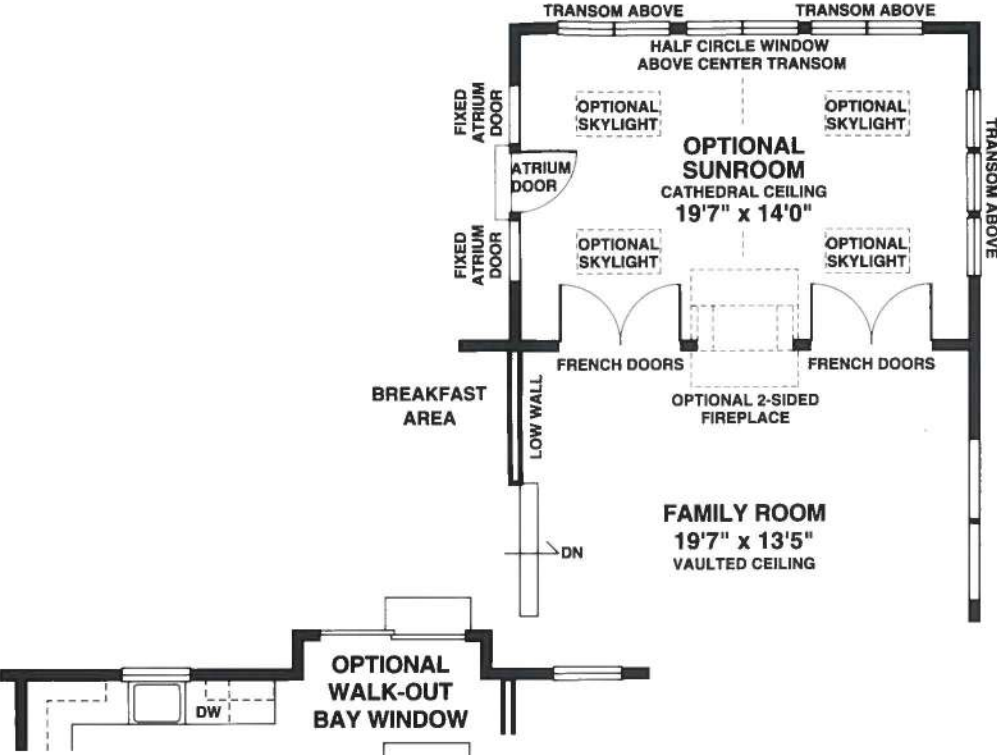
**CALVERT II**



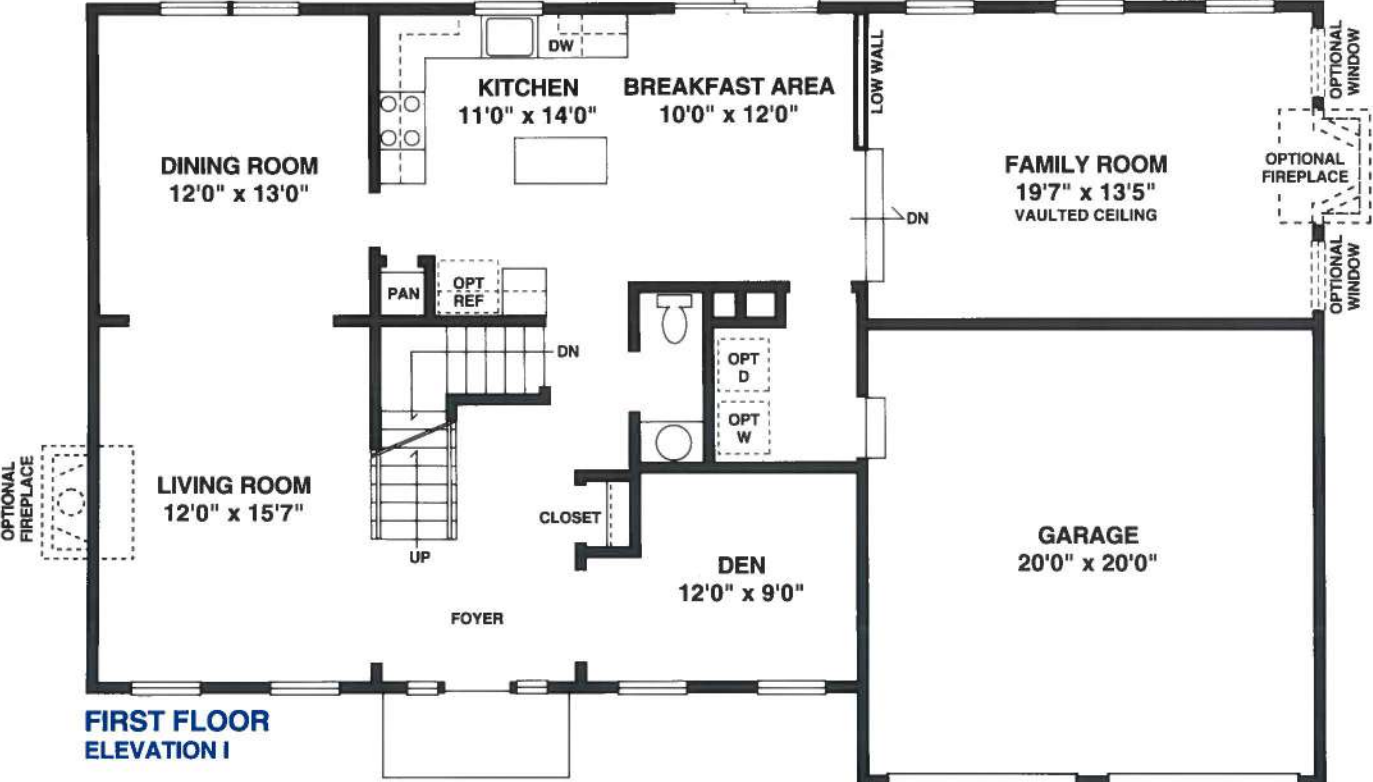
ARTIST'S CONCEPTION. DETAILS MAY VARY.



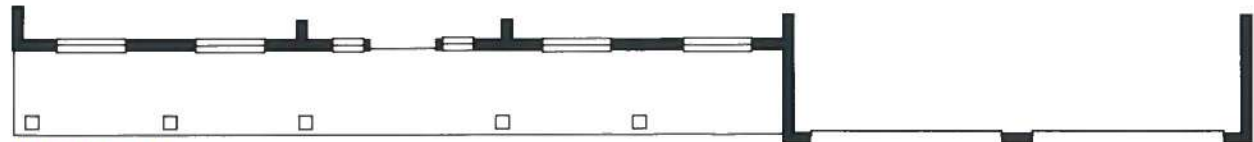
# THE CALVERT I, II & III



Optional Sitting Room



FIRST FLOOR ELEVATION I



ELEVATION II



ELEVATION III



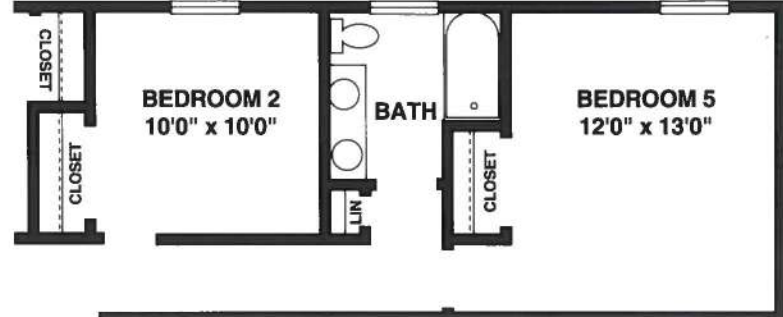
SECOND FLOOR ELEVATION I



ELEVATION II



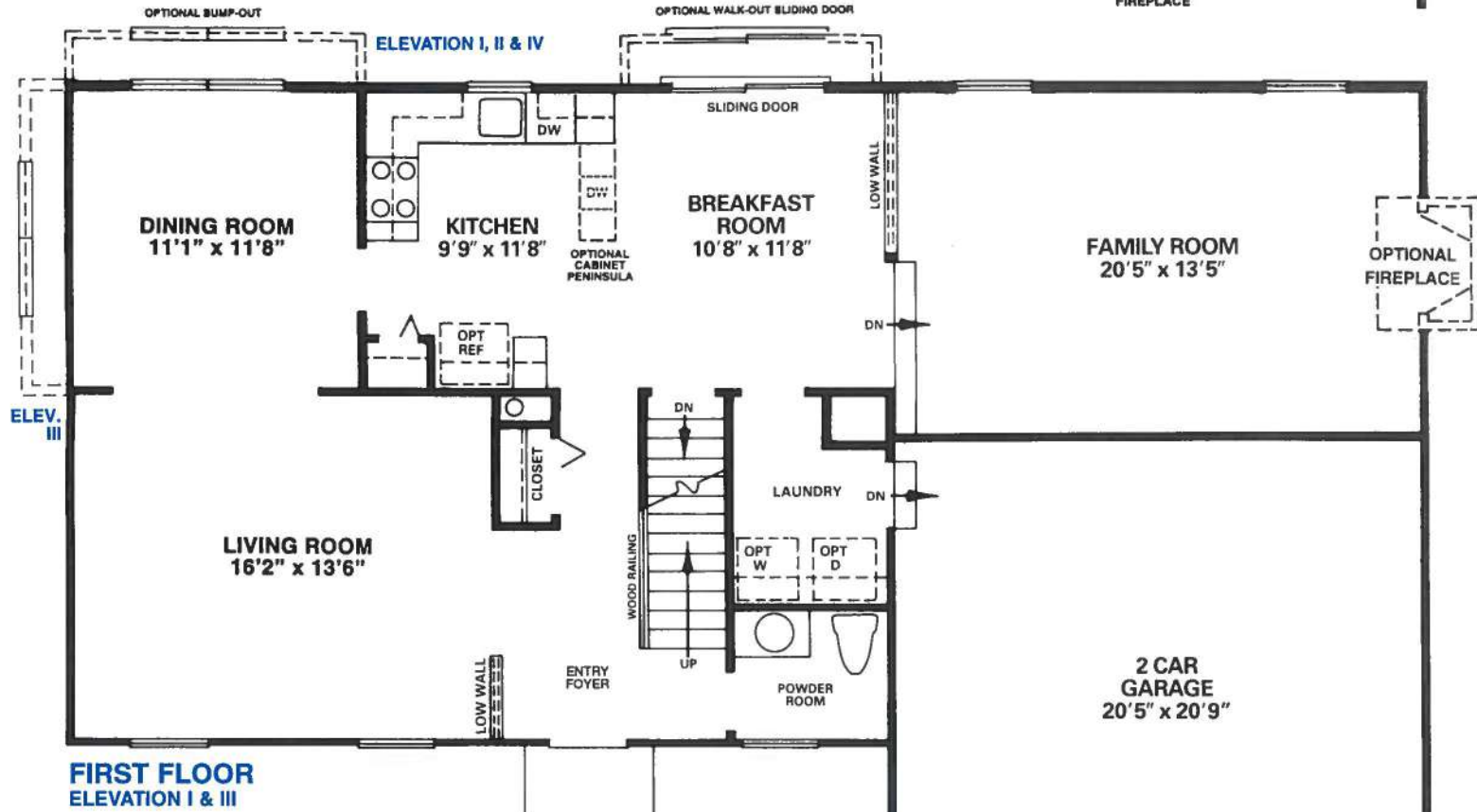
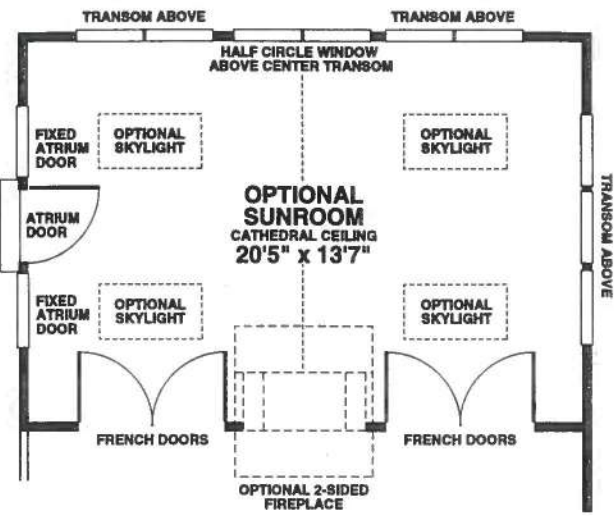
ELEVATION III



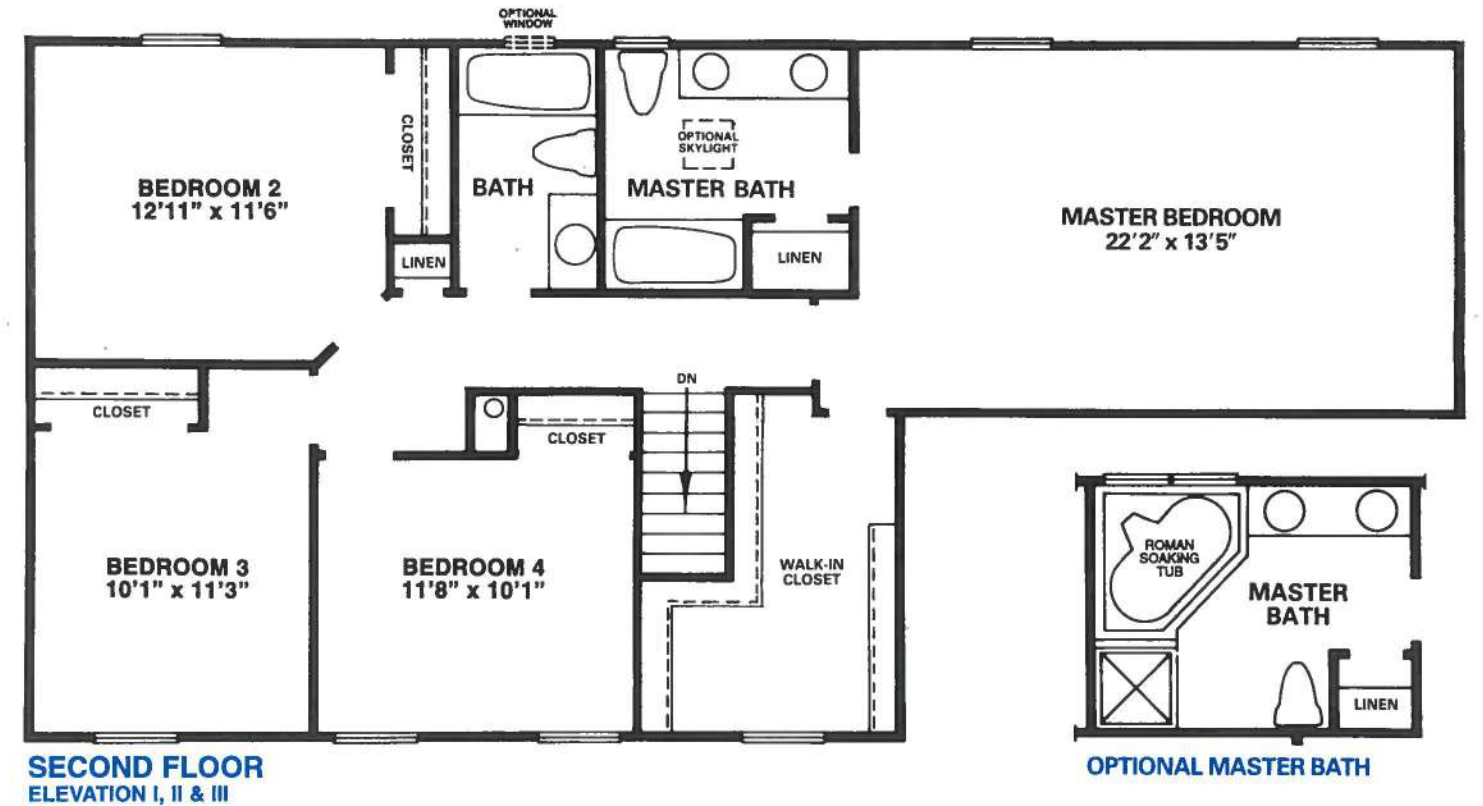
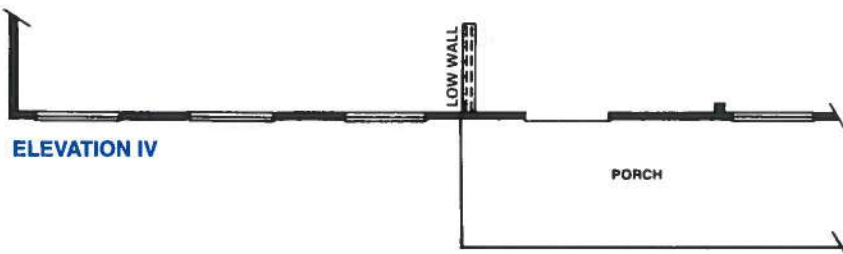
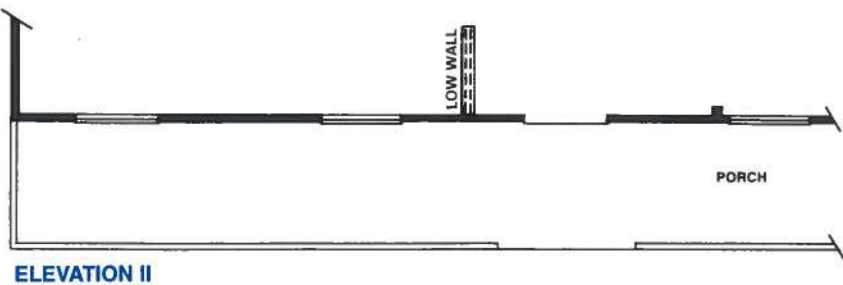
Optional 5th bedroom  
(Vaulted ceiling in family room is eliminated)

All dimensions approximate and subject to change.

# THE DOUGLAS I, II, III & IV



FIRST FLOOR  
 ELEVATION I & III



SECOND FLOOR  
 ELEVATION I, II & III

OPTIONAL MASTER BATH

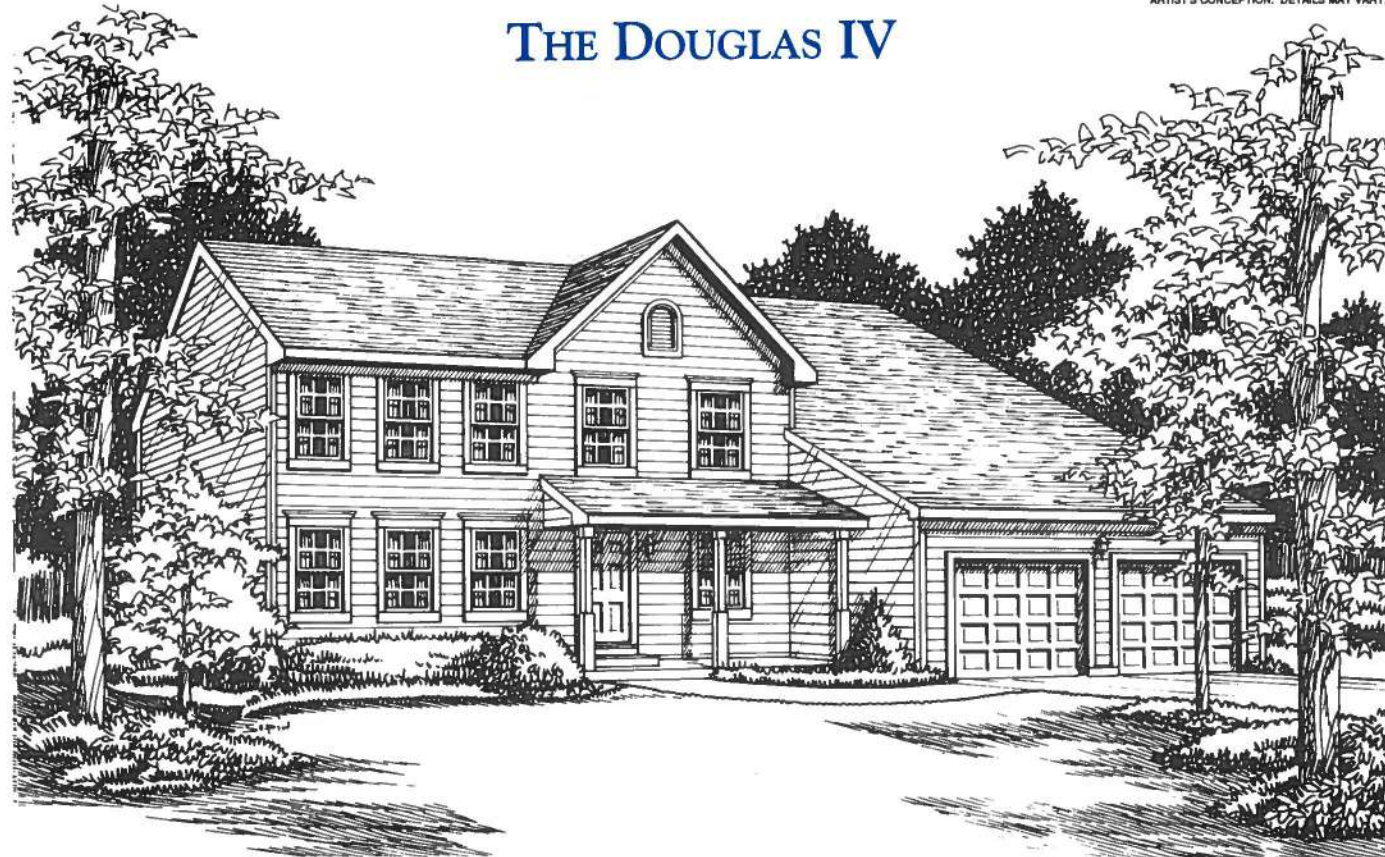


THE DOUGLAS III



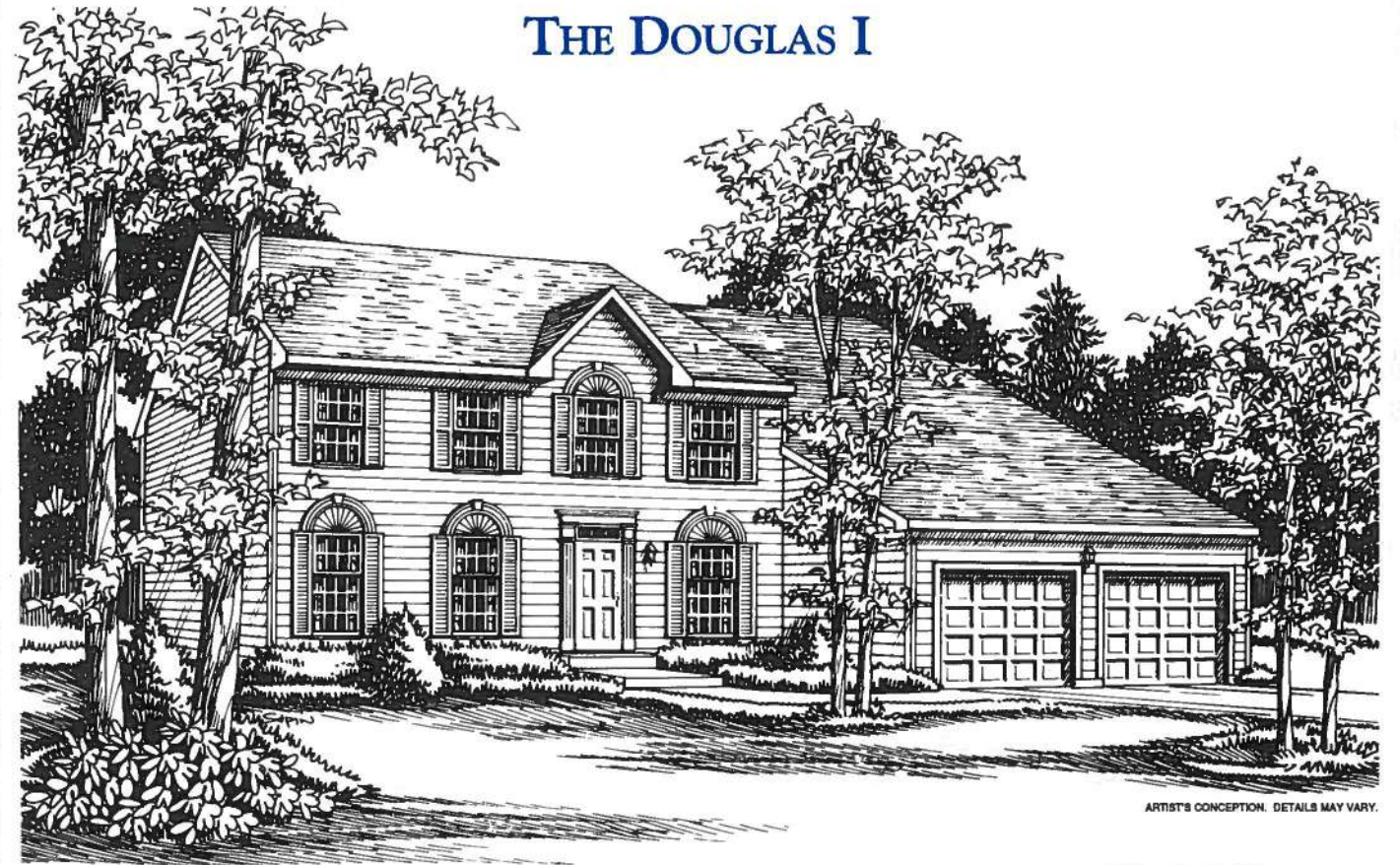
ARTIST'S CONCEPTION. DETAILS MAY VARY.

THE DOUGLAS IV



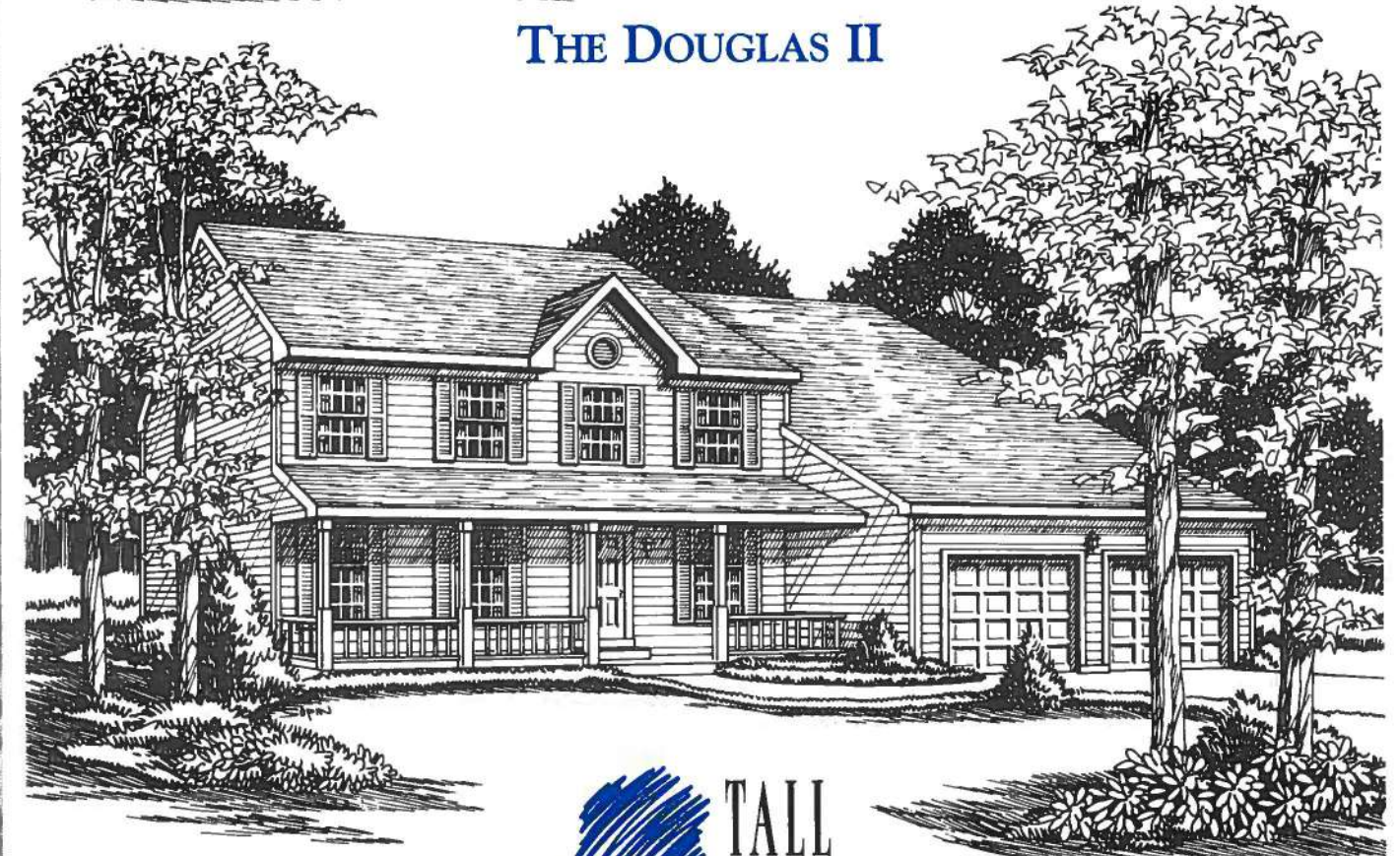
ARTIST'S CONCEPTION. DETAILS MAY VARY.

THE DOUGLAS I



ARTIST'S CONCEPTION. DETAILS MAY VARY.

THE DOUGLAS II



ARTIST'S CONCEPTION. DETAILS MAY VARY.

