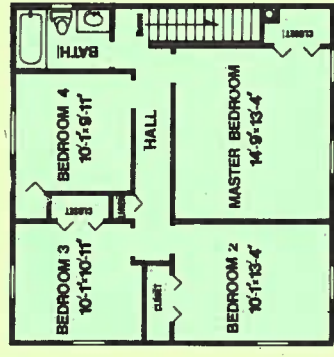


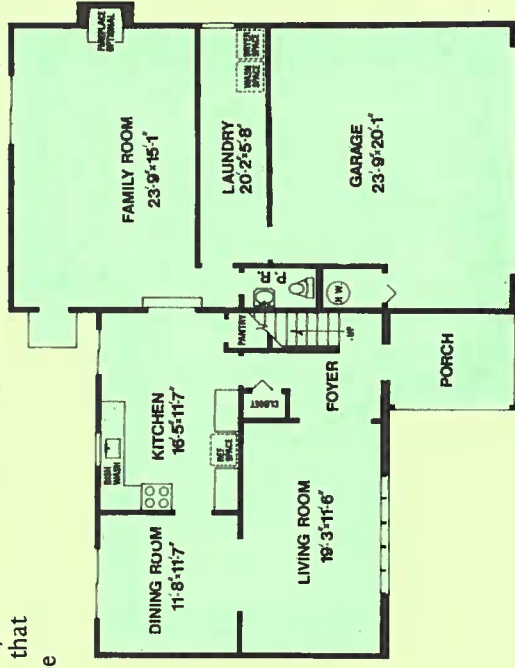
## The Executive

True to its name, this exceptional residence exudes a distinctly executive environment that permeates the entire home. An impressive reception foyer begins the rich, but subtle flavor that extends throughout each and every room. The family room with optional fireplace on the lower level adds an element of comfortable homeyness and tranquility.

The Executive. It unhesitatingly offers you a lifestyle that consists of the utmost in pleasure, pleasure that will last you a lifetime in a residence you will be proud to call home.



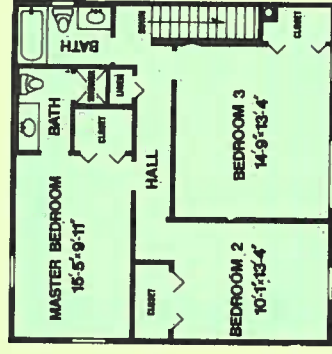
Optional Master Bath



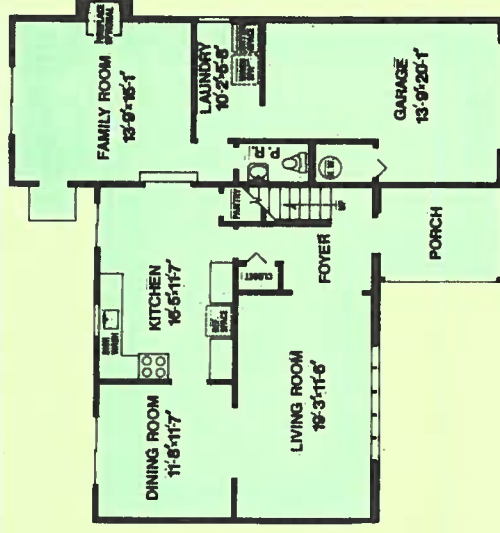
## The Sherwood

The Sherwood, a lovely colonial styled residence, offers you luxurious living blended with practicality. And yet, this two story home is modestly priced and is even complete with special features seldom included even in more expensive homes.

A gracious foyer entry in which to welcome guests, plus a spacious family room for leisurely entertaining or for comfortable home relaxation. Elegance and convenience. The Sherwood is proof that both are attainable. We call it the height of fine living. So will you.



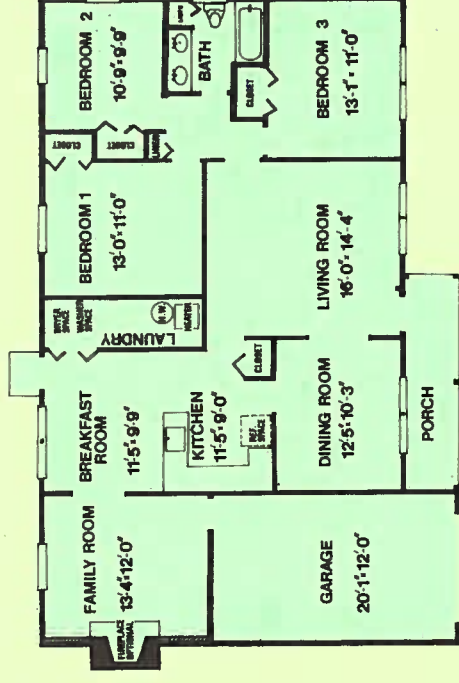
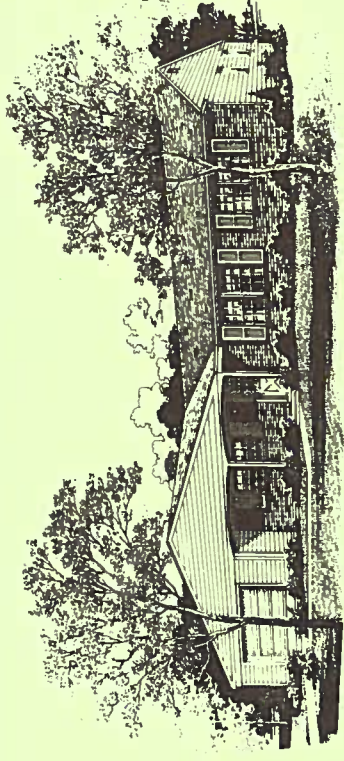
Optional Master Bath



## The Mill Rancher

This handsome home, designed with a versatility that begins with a lovely covered porch, offers you the ultimate in comfort with the convenience of one floor living. And the step-saving floor plan means an easier life for you, without the relinquishment of luxury.

The Millrancher is further enhanced by the atmosphere of tasteful elegance that pervades throughout. Comfort and elegance. A superb combination that lends itself well to making this home the one to suit your every need, as well as your every desire.



# Homes include economical Fuel saving HEAT PUMP

Additionally, to satisfy the home owner's needs and to insure long term savings, construction details and equipment include a multitude of energy saving features.

1. First floor - perimeter insulated, poly-ethylene laid prior to laying the floor.
2. Interior walls - full thick insulation, and prior to applying this insulation the builders will insulate walls with polyethylene as a vapor barrier, then adding 4" insulation in the walls and 10" insulation in the attic.
3. Insulated windows throughout the house and insulated steel doors front and back.
4. Exterior walls - sheathing applied first, then wrapped with aluminum foil and the Aluminum Siding, which should accomplish an approximate savings of 40% off the conventional construction in energy.

Each home at the Woods of Washington comes fully equipped with an energy efficient, fuel economy package, which begins with the Friedrich Heat Pump. This dependable system is one of the most modern, efficient and economical methods of heating and cooling your home.

The Friedrich Heat Pump operates by extracting heat from the outside air (heat exists even at low temperatures) and transferring it indoors for the heating cycle. During the air conditioning cycle it reverses the process, removing heat from indoors and transferring it outdoors. In this way a comfortable environment is maintained in the home year round.

There are many advantages to the Heat Pump. One unit provides both central air conditioning and heating. And there is no flue or fuel shortage tank required. There are no products of combustion, no smoke or soot, so furnishings, walls and ceilings will stay cleaner longer.