



PRICE LIST

2-26-97

THE REGAL

Basement, four bedrooms, 2-1/2 baths, library, grand two story foyer, family room with soaring two story ceiling, fabulous master suite with huge walk-in closet and luxurious master bath, two car garage.

The Regal Estate _____ Price Includes Basement _____ \$197,400.
 The Regal Federal _____ Price Includes Basement _____ \$189,400.

THE HAMPTON

Basement, four bedrooms, 2-1/2 baths, huge family room, formal living room, dining room, angled staircase, open foyer, 9 foot ceilings on first floor, two car garage.

_____ Price Includes Basement _____ \$192,400.

THE PRINCETON

Four bedrooms, 2-1/2 baths, vaulted family room, open foyer, 9 foot ceilings on first floor, luxurious master suite with two walk-in closets, morning staircase, two car garage.

_____ Price Includes Basement _____ ~~\$199,400~~

THE EMBASSY GRAND

Four bedrooms, 2-1/2 baths, columned entry into formal living room, family room, open foyer, 9 foot ceilings on first floor, two car garage.

_____ Price Includes Basement _____ \$183,400.

THE EMBASSY

Four bedrooms, 2-1/2 baths, family room, open foyer, two car garage.

_____ Price Includes Basement _____ \$178,400.

THE LEXINGTON

Four or five bedrooms, 2-1/2 baths, family room, open foyer, library option, two car garage. Six Optional Elevations Available.

_____ Price Includes Basement _____ \$174,400.

THE CAMBRIDGE

Three or four bedrooms, 2-1/2 baths, large family room, 9 foot ceilings on first floor, open foyer, master suite with huge walk-in closet and luxurious master bath, two car garage.

The Cambridge—Three bedrooms _____ Price Includes Basement _____ \$162,400.
 The Cambridge—Four bedrooms _____ Price Includes Basement _____ \$165,900.

THE GRANDVIEW

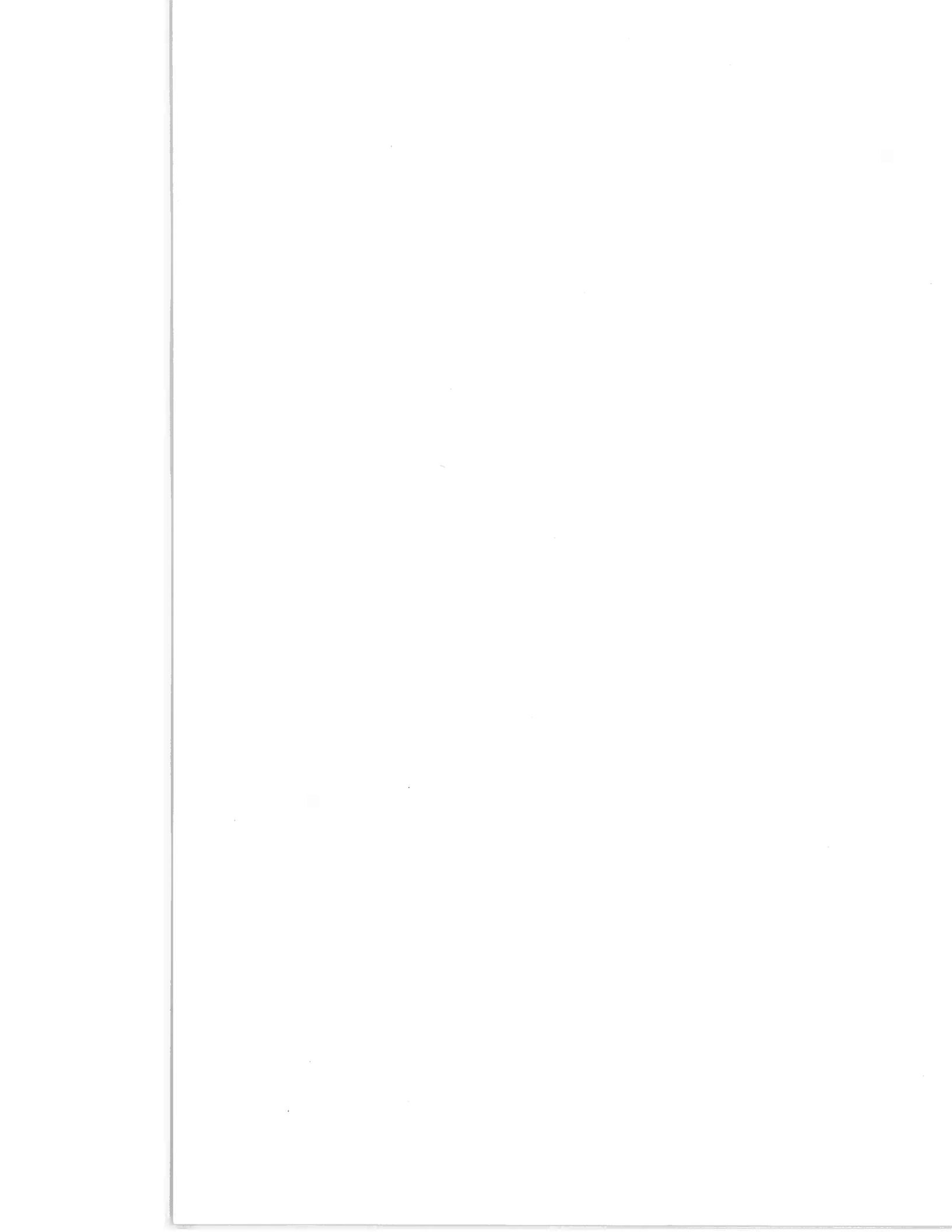
Three or four bedrooms, 2-1/2 baths, family room, 17 foot ceiling in living room and dining room, two car garage.

The Grandview—Three bedrooms _____ Price Includes Basement _____ \$151,400.
 The Grandview—Four bedrooms _____ Price Includes Basement _____ \$155,400.



DON PAPANONE, INC.
 PAPANONE HOMES OF NEW JERSEY, INC.

(609) 881-7744
 Prices subject to change without notice. Subject to errors & omission.





QUALITY STANDARD FEATURES

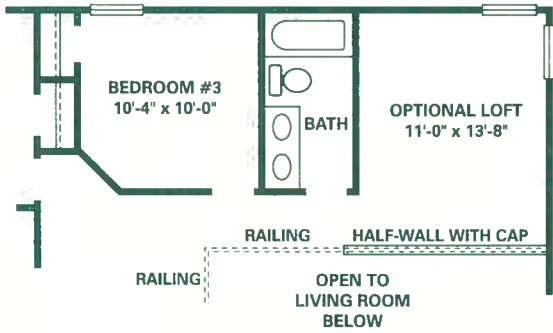
- G.E. range, dishwasher and disposal
- Quality oak kitchen cabinets and vanities
- Stainless steel sink
- Single lever faucets
- Range hood
- Color coordinated countertops
- Washer and gas dryer hook-up
- Vent for dryer
- Economical gas-fired heating system
- 40 gallon gas hot water heater
- R-13 and R-30 insulation factors
- Vinyl siding
- Self-sealing fiberglass roof shingles
- Aluminum gutters and downspouts
- All copper interior water lines
- Insulated steel entry doors
- Vinyl, tilt-in windows with grids, screens & double pane insulation
- Energy-saving sill sealers
- Two exterior hose bibs
- Waterproof exterior electrical outlets
- Door chimes
- Exterior lights—front and rear
- 5/8" tongue and groove plywood subfloors, glued and nailed
- Sodded front lawn in disturbed areas, seeded side and rear lawn in disturbed areas
- Shrubbery package
- Wall to wall carpeting
- Vinyl flooring in kitchen, laundry room and baths
- Bathroom mirror and medicine cabinet
- Smoke detectors
- Water-saving plumbing fixtures
- Decorator light fixtures
- Front door deadbolt lock
- Perimeter slab insulation
- Colonial base trim throughout
- Painted walls and trim throughout
- Concrete driveways and curbs
- Illuminated streets
- Municipal water and sewer
- Underground utilities
- Termite treatment certification
- 2-10 H.B.W. ten year home warranty protection plan
- Pre-settlement orientation plan
- One month follow-up after settlement
- The security of knowing that your builder has a reputation for quality and has maintained a standard of building excellence for over 40 years



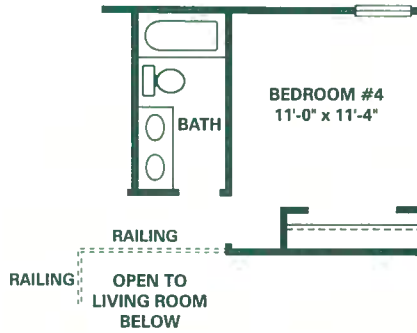
DON PAPANONE, INC.
PAPANONE HOMES OF NEW JERSEY, INC.

In the interest of continuous improvement, the builder reserves the right to substitute materials with items of comparable or superior quality, depending on availability.

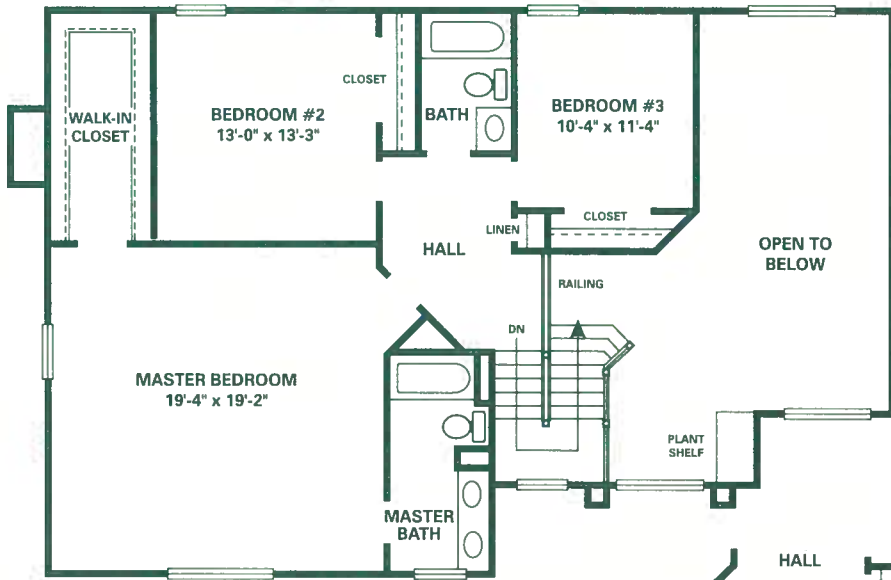




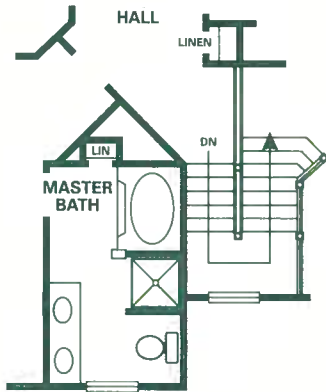
SECOND FLOOR LOFT OPTION



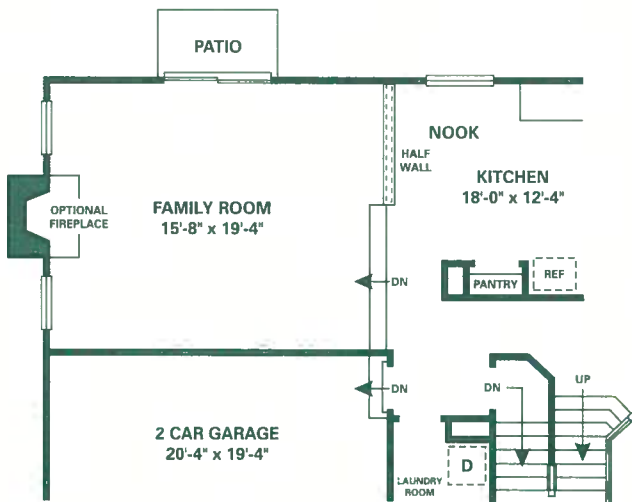
4th BEDROOM OPTION



EXPANDED MASTER BEDROOM OPTION



SUPER MASTER BATH OPTION

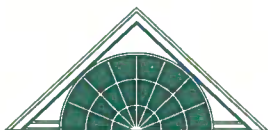


EXPANDED FAMILY ROOM OPTION

All dimensions are subject to field variations. Specifications and features are subject to change without notice.

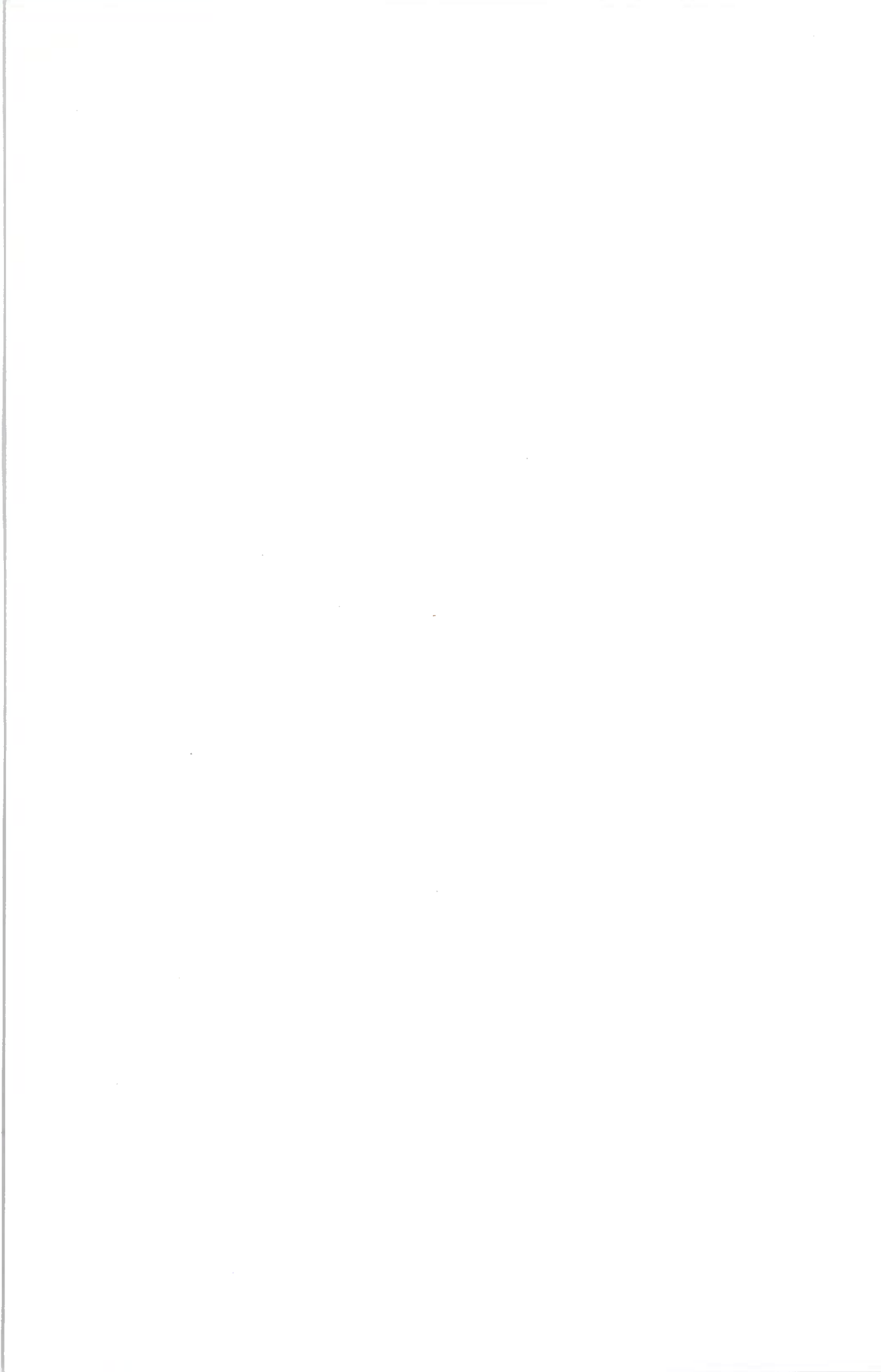
© 1996 Paparone Homes of New Jersey

The GRANDVIEW Optional Floor Plans



DON PAPARONE, INC.
PAPARONE HOMES OF NEW JERSEY, INC.

Phone
(609) 424-7000



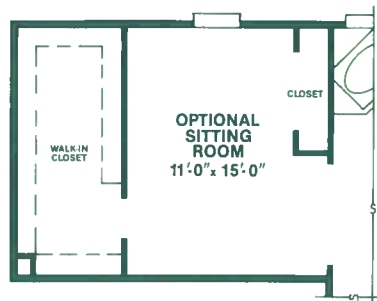
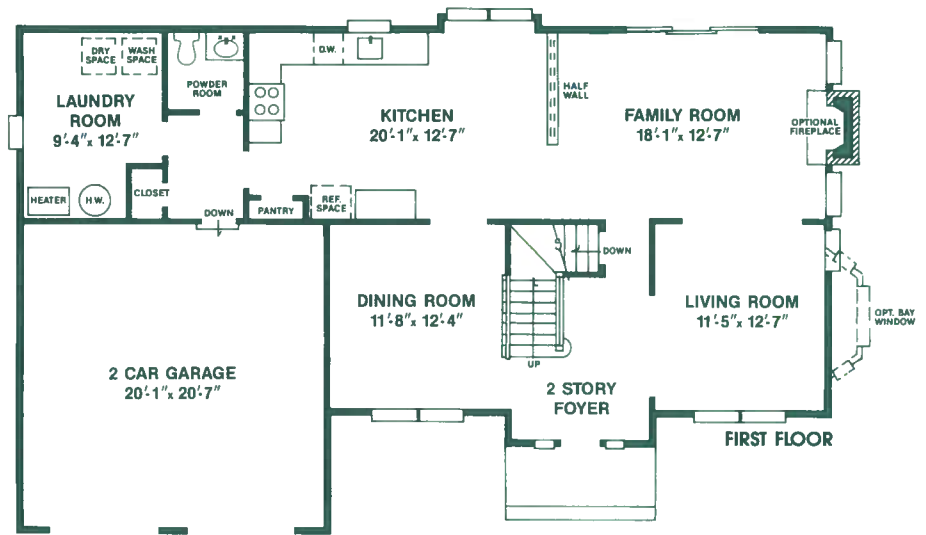


Pictured is an artist's conception.

The CAMBRIDGE

There are four great reasons to move up to the Cambridge. **SPACE** - bigger rooms and larger closets allow you to expand in comfort. **DESIGN** - impressive styling creates a brilliant first impression. **DRAMA** - among the exciting features are a two story foyer and an extravagant master suite. **VALUE** - enjoy more home for the money including custom class extras.

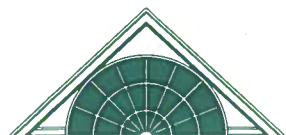
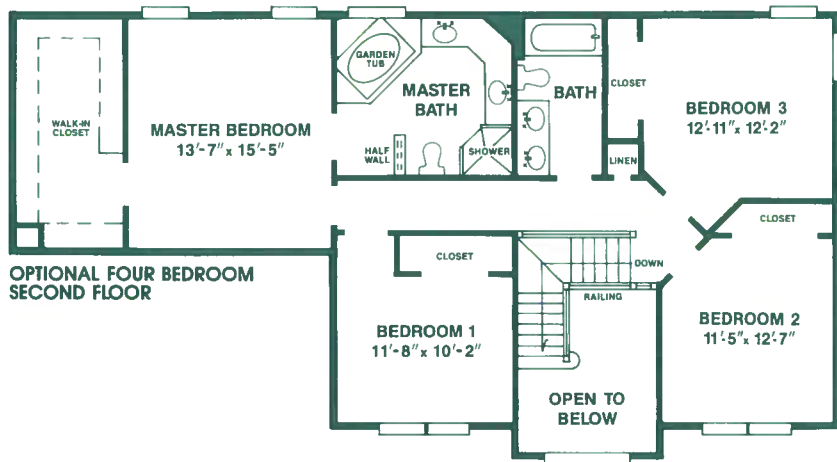
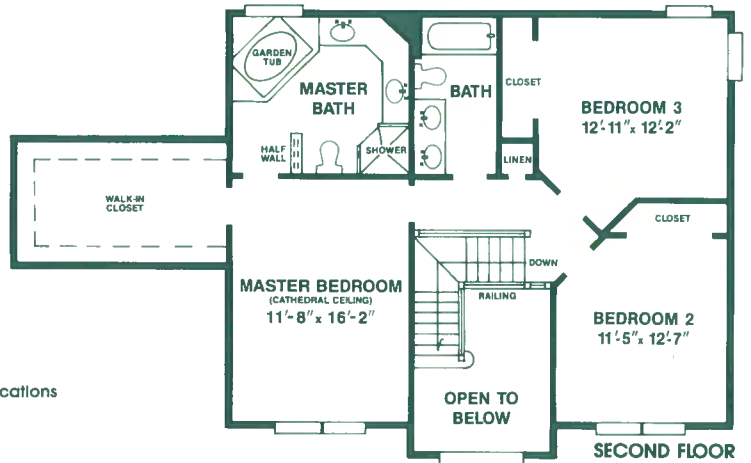
- Three bedrooms (fourth bedroom available)
- Two and a half baths
- Striking brick front design available
- 9' ceilings on first floor
- Sensational two story entry foyer
- Elegant living room with optional bay window
- Landing staircase with wooden handrail
- Expansive family room with sliding glass doors
- Fully-featured kitchen with pantry and box bay window
- Magnificent owner's suite with a room-size closet, optional sitting room and a spectacular bath including a twin sink vanity
- Large laundry room
- Two car garage



OPTIONAL MASTER SUITE SITTING ROOM

All dimensions are subject to field variations. Specifications and features are subject to change without notice.

© 1996, Paparone Homes of New Jersey, Inc. (HW)



DON PAPARONE, INC.
 PAPARONE HOMES OF NEW JERSEY, INC.

Phone
 (609) 424-7000



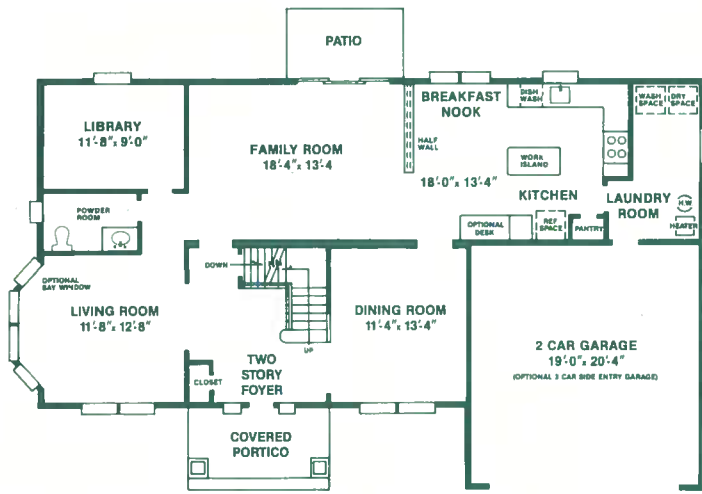
Optional elevation "B" shown above.

Pictured is an artist's conception.

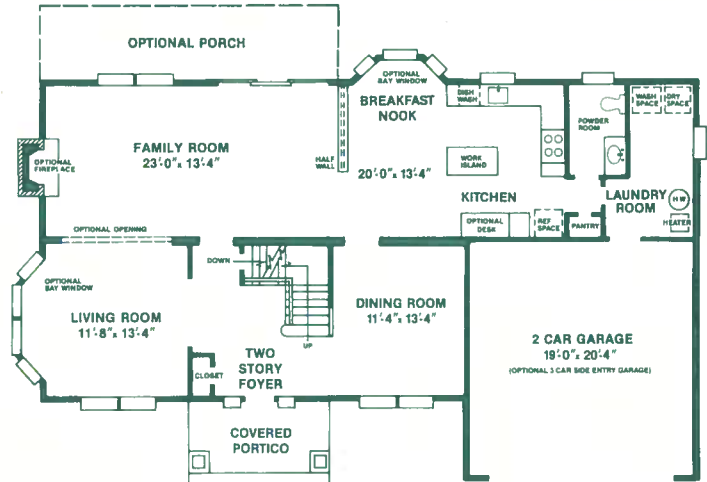
The LEXINGTON

A huge palladian window and breathtaking columns enhance the clean-lined elegance that gives the relaxed Lexington home its enchanting simplicity. Inside, family sized rooms create a lively openness as well as intriguing refinement. With an abundance of space for family activities and formal entertaining, the Lexington is both your private retreat and your public delight.

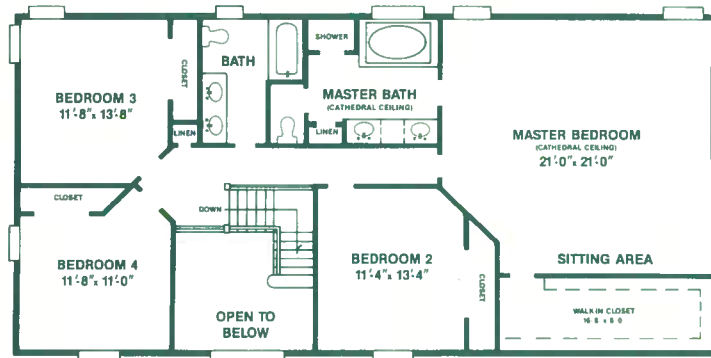
- Four bedrooms
- Library or fifth bedroom option
- Two and a half baths
- Multiple frontage design options
- Dramatic two story foyer
- Landing staircase with wooden handrail
- Roomy formal living and dining rooms with double windows
- Welcoming family room with sliding doors to patio, half wall to kitchen
- Country kitchen with sunny breakfast nook, center island, optional work desk
- Enormous master suite with oversized walk-in closet, cathedral ceiling, private bath with garden soaking tub, double sink vanity, separate shower, plant shelf
- Laundry room
- Two car garage



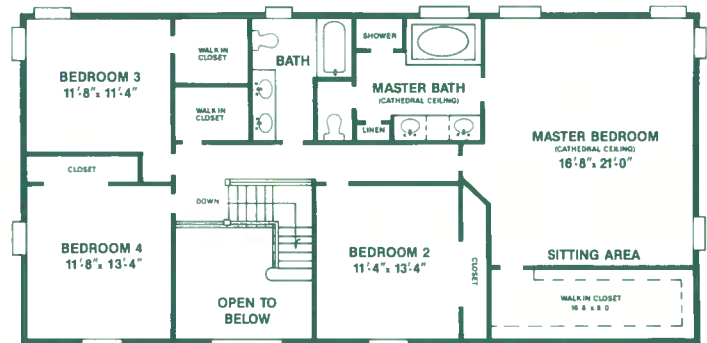
FIRST FLOOR PLAN A



FIRST FLOOR PLAN B



SECOND FLOOR PLAN C



SECOND FLOOR PLAN D

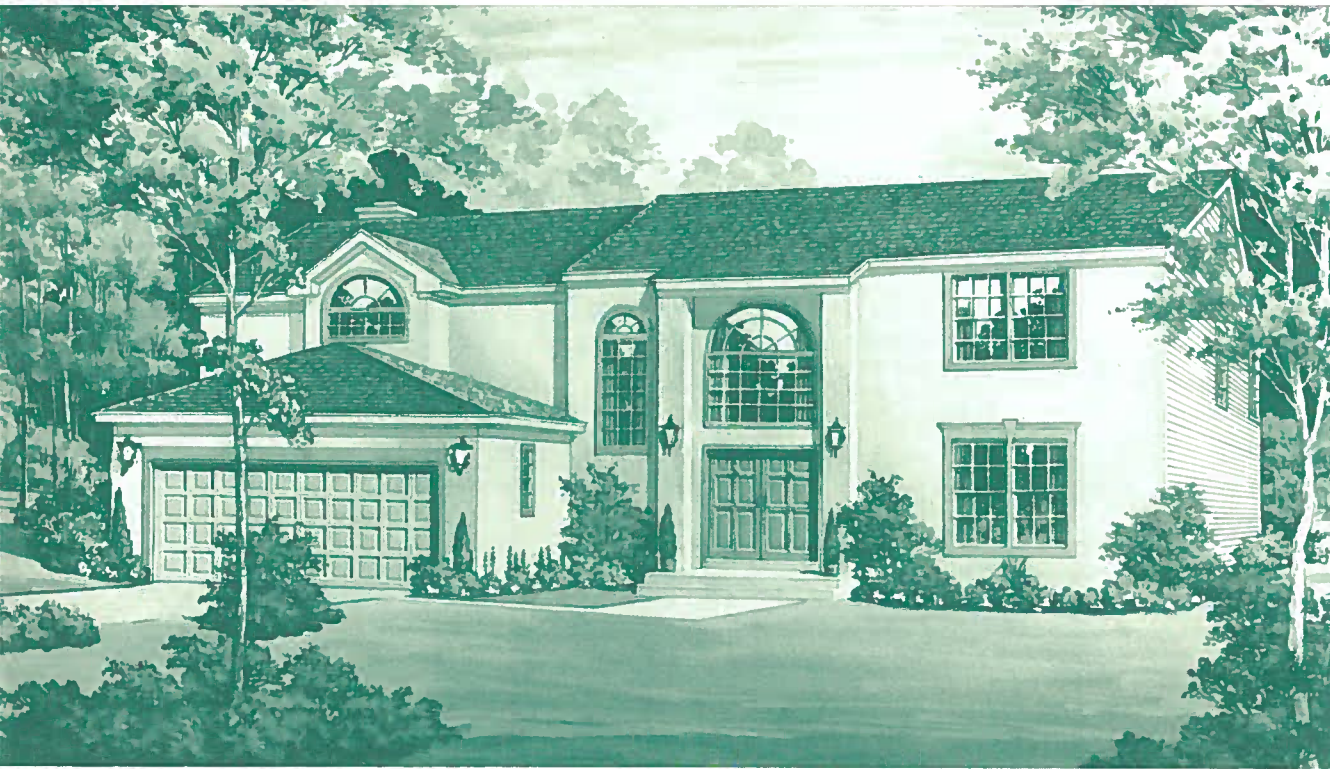
All dimensions are subject to field variations. Specifications and features are subject to change without notice.

© 1996, Paparone Homes of New Jersey, Inc. (HW, CF)



DON PAPARONE, INC.
PAPARONE HOMES OF NEW JERSEY, INC.

Phone
(609) 424-7000

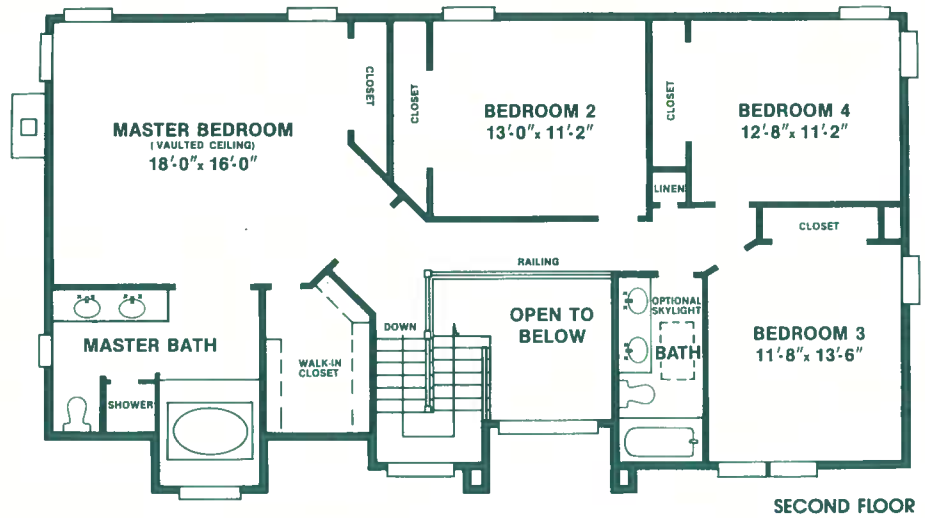
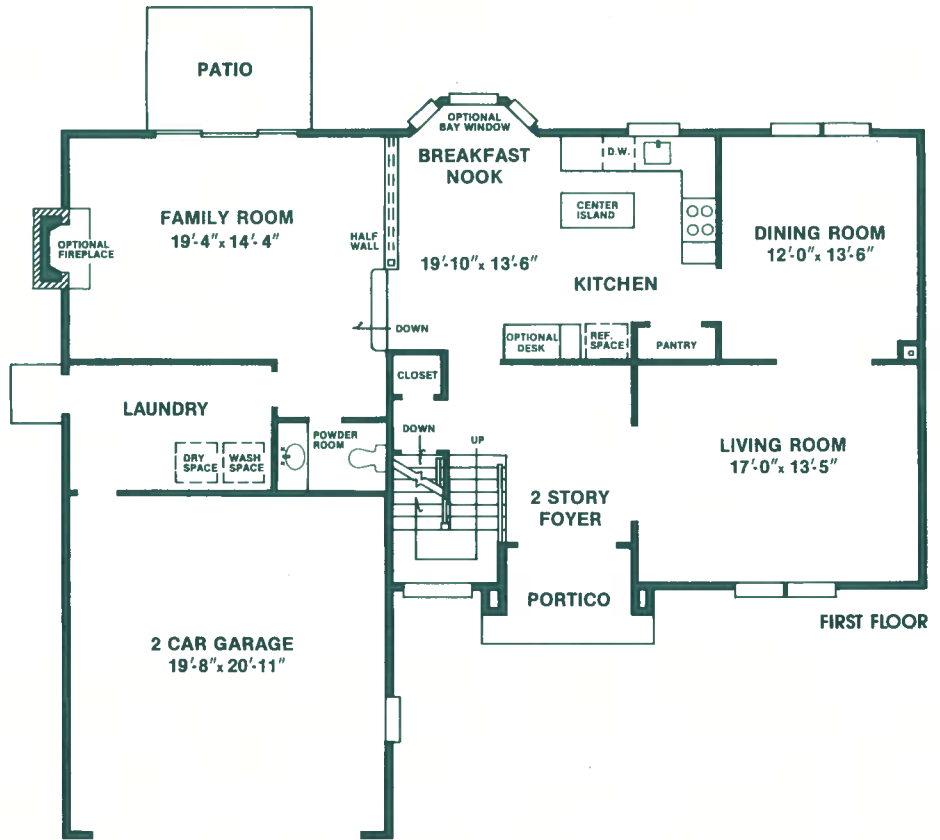


Pictured is an artist's conception.

The EMBASSY

A dramatic portico entrance sets the tone for the beautifully well-planned Embassy. Palladian, twin and picture windows create indoor spaces filled with light, which are designed to transform easily from casual family to formal entertaining occasions. With a kitchen built for a gourmet and a master suite that is the ultimate in luxury, the Embassy is a home designed for your active family.

- Four bedrooms
- Two and a half baths
- Columned portico entry; two story foyer with staircase balcony
- Spacious formal living and dining rooms with twin windows
- Family room with sliding glass doors to patio; fireplace option
- Gourmet kitchen with center island, breakfast nook with optional bay window
- Opulent master suite with double-door entry, vaulted ceiling, large walk-in closet. Private bath with raised garden tub (whirlpool option), double sink vanity, separate shower
- Laundry with outdoor access
- Two car garage



All dimensions are subject to field variations. Specifications and features are subject to change without notice.

© 1990, Paparone Homes of New Jersey, Inc.



DON PAPARONE, INC.
PAPARONE HOMES OF NEW JERSEY, INC.

Phone
(609) 424-7000

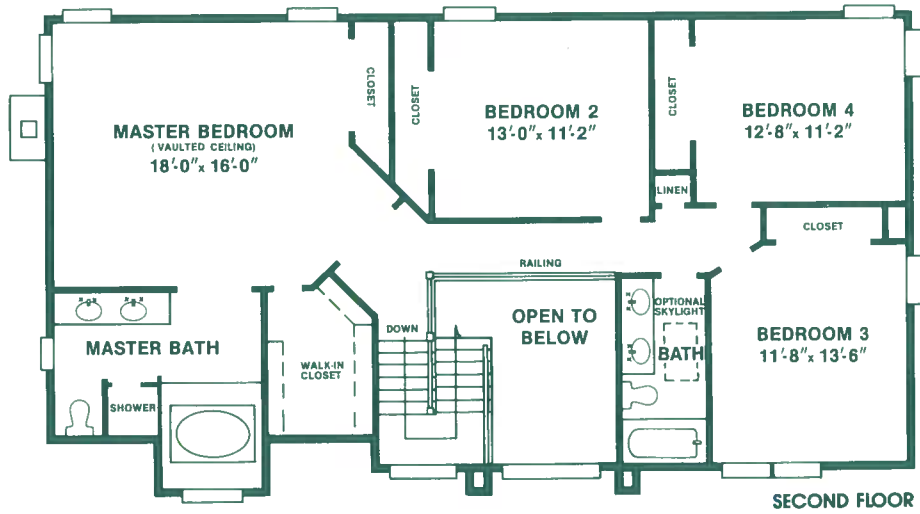
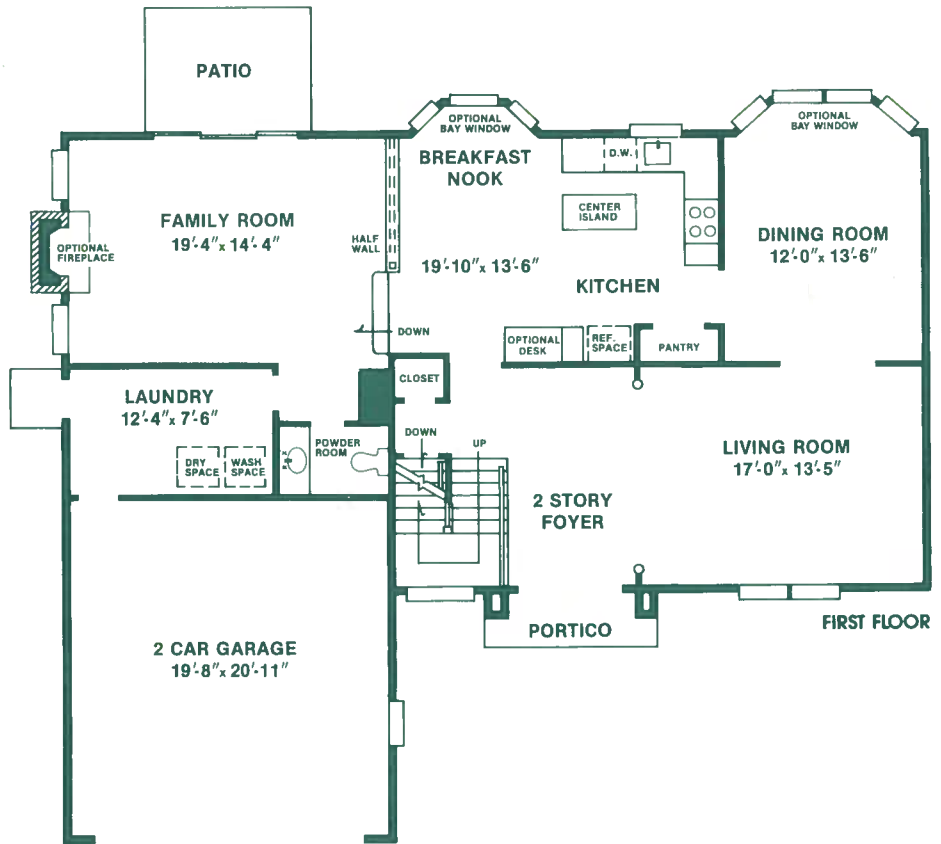


Pictured is an artist's conception.

The EMBASSY GRAND

Spacious and dramatic — that's the Embassy Grand. A formal two story foyer with a balcony staircase is the first glimpse of the architectural beauty of this stunning home, which boasts nine foot ceilings throughout the first floor. Formal areas are accented: the living room is graced with columns, and the dining room features an optional bay window. The inviting family room has a fireplace option. Upstairs, an exquisite master suite is designed to pamper you in comfort. For an abundance of space, at no expense of style, choose the Embassy Grand.

- Four bedrooms
- Two and a half baths
- Breathtaking formal two story foyer with balcony staircase
- Spacious formal living room with columns; dining room with bay window option
- Family room with sliding glass doors to patio; fireplace option
- Gourmet kitchen with center island, breakfast nook with optional bay window
- Opulent master suite with platform soaking tub
- Laundry with outdoor access
- Two car garage



All dimensions are subject to field variations. Specifications and features are subject to change without notice.

© 1992, Paparone Homes of New Jersey, Inc.



DON PAPARONE, INC.
PAPARONE HOMES OF NEW JERSEY, INC.

Phone
(609) 424-7000

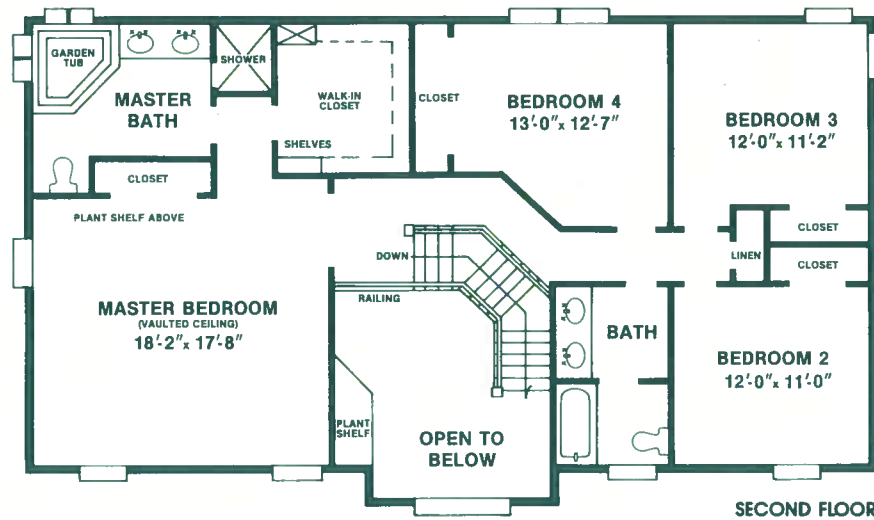
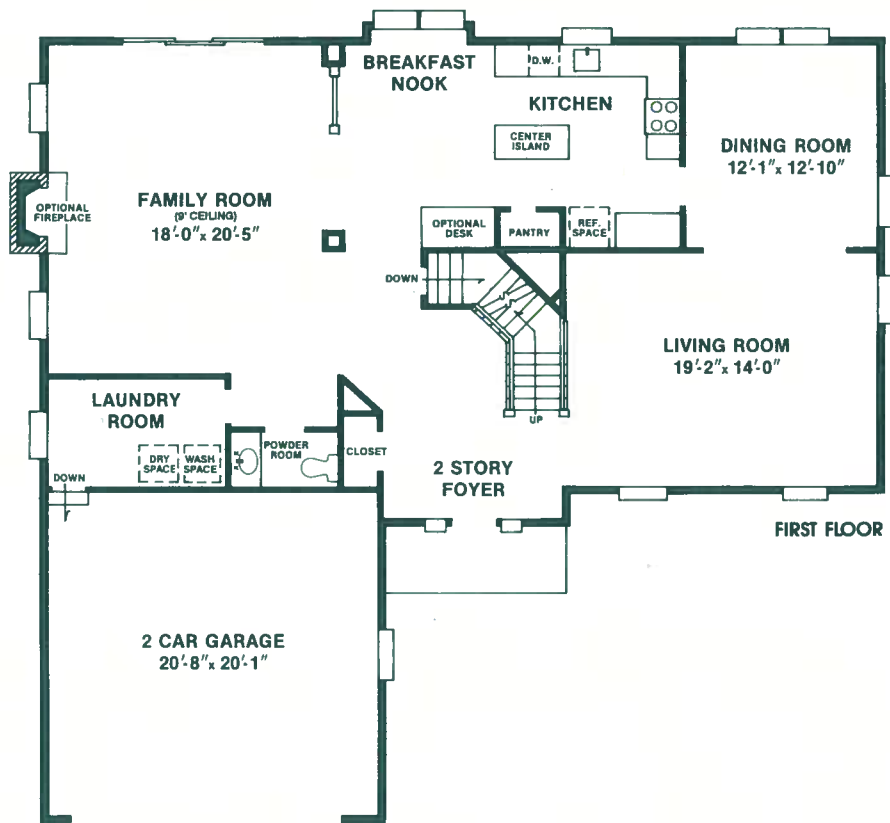


Pictured is an artist's conception.

The HAMPTON

Open spaces filled with sunshine. . . dramatic architecture. . . the Hampton is made for contemporary living. The magnificent two story foyer has an angled staircase, balcony overlook and plant shelf. A voluminous family room boasts elegant columns, and the oversized kitchen has a center island and large pantry. The entire first floor has nine foot ceilings, maximizing the light that streams in through an abundance of glass. Upstairs, the master suite is extravagant, with a double door entry, vaulted ceilings, plant shelves, a walk-in closet, and a master bath that is completely indulgent. A full basement is also included in the Hampton — built for today's living.

- Four bedrooms, two and a half baths
- Grand two story entrance foyer, with angled staircase, balcony overlook, and plant shelf
- Nine foot ceilings on the first floor
- Oversized family room with elegant columns
- Spacious living room ● Gourmet kitchen
- Luxurious master bedroom with double door entry, vaulted ceiling, and walk-in closet
- Pampering master bath with garden tub, two vanities and separate shower
- Two car garage ● Full basement included



All dimensions are subject to field variations. Specifications and features are subject to change without notice.

© 1992, Paparone Homes of New Jersey, Inc. (HW)



DON PAPANONE, INC.
 PAPANONE HOMES OF NEW JERSEY, INC.

Phone
 (609) 424-7000

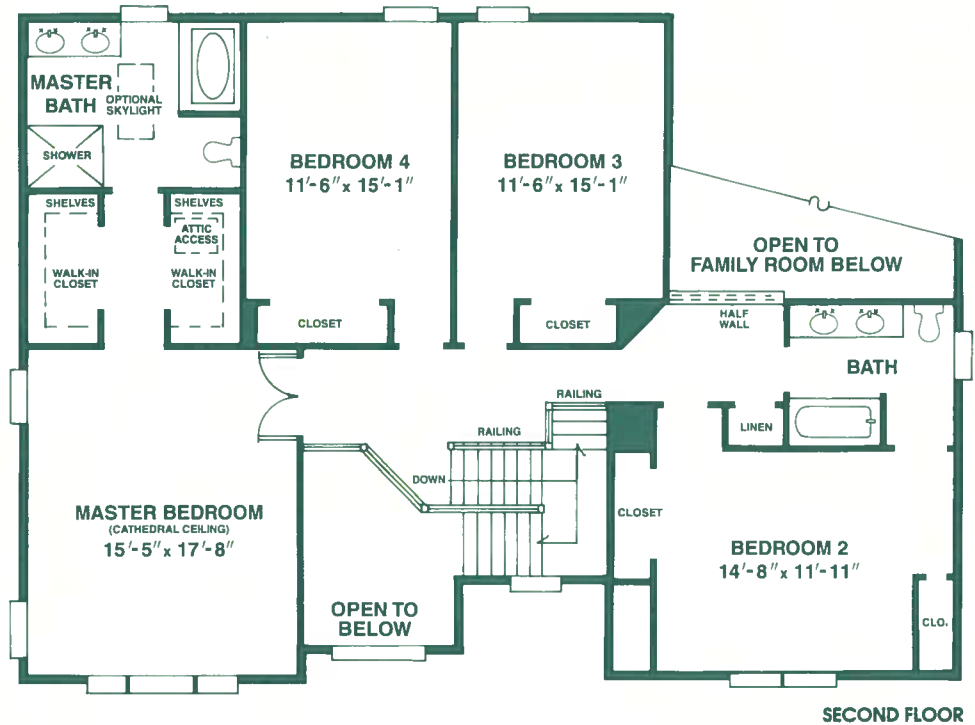
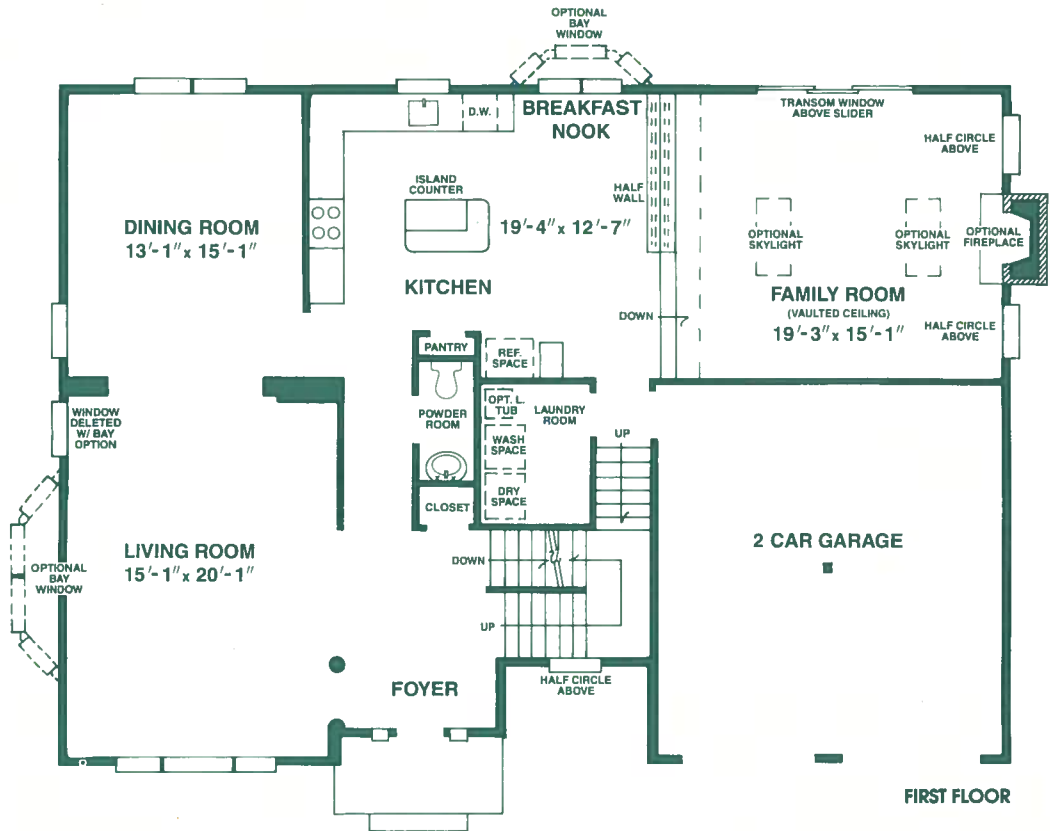


Pictured is an artist's conception.

The PRINCETON

The Princeton offers an irresistible combination of distinctive traditional styling and sensational interior design. Take special note of the large living and dining rooms, the vaulted ceiling and available skylights in the family room, a double morning staircase, dramatic second floor overlook and a grand owner's suite with cathedral ceiling and two walk-in closets.

- Four bedrooms ● Two and a half baths
- Distinguished traditional style architectural design
- Stucco accented front exterior
- Soaring two story entry foyer with balcony overlook
- Large living room with optional bay window
- Elegant and expansive dining room
- Country-sized kitchen with island counter, breakfast nook and optional bay window
- Dramatic family room with vaulted ceiling, beautiful window-scaping and optional skylights
- Delightful second floor view into family room
- Magnificent owner's suite featuring cathedral ceiling, two walk-in closets and private bath with double sink vanity, garden tub, shower and optional skylight
- Two car garage



All dimensions are subject to field variations. Specifications and features are subject to change without notice.

© 1997, Paparone Homes of New Jersey, Inc.



DON PAPANONE, INC.
PAPANONE HOMES OF NEW JERSEY, INC.

Phone
(609) 424-7000

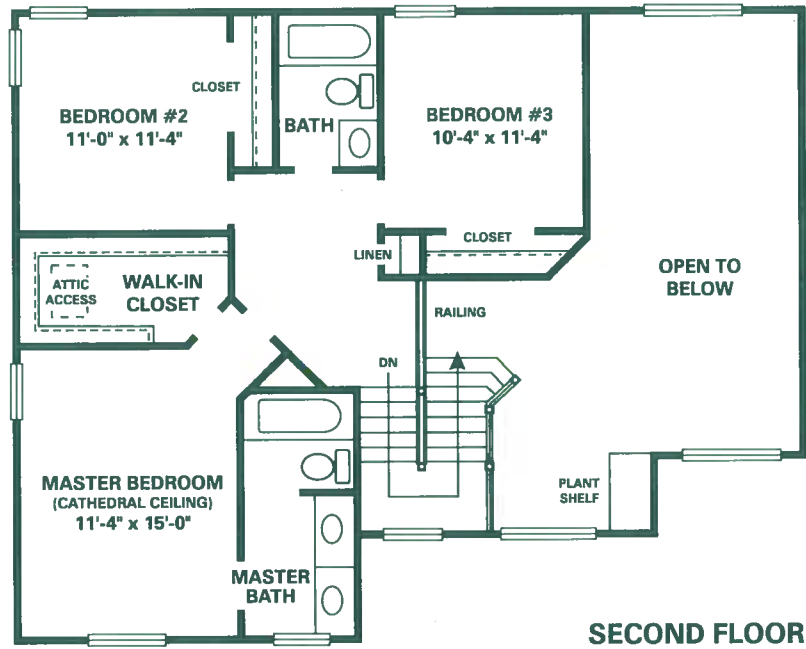
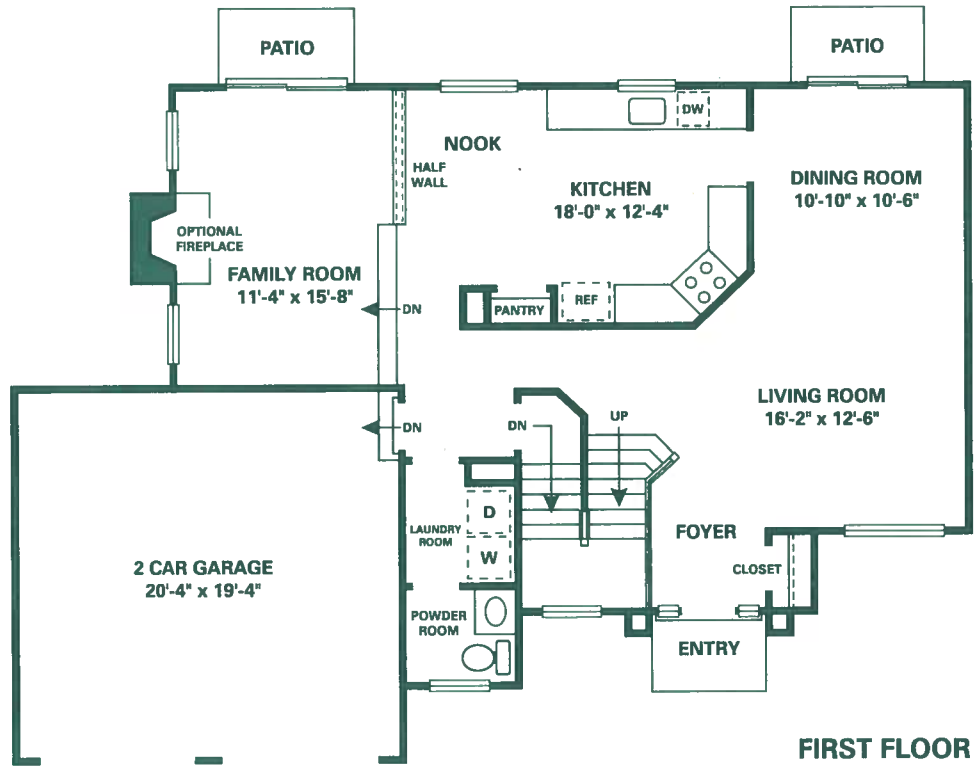


Pictured is an artist's conception.

The GRANDVIEW

Fresh and open design at its light-filled best is the Grandview. This stylish home is graced with an abundance of palladian and picture windows, 17' ceilings, half walls and sliding glass doors. Flowing rooms give an airy feeling, while overhead plant shelves add natural beauty or hold your favorite collectables. Family and entertaining spaces are well-planned for privacy as well as sociability, and a fourth bedroom option adds versatility. Find the perfect family place in the Grandview.

- Three or four bedrooms (fourth bedroom optional)
- Two and a half baths
- Columned portico entry; two story foyer
- Open formal living and dining room design with 17' ceilings
- Two patios with sliding glass doors
- Large kitchen with pantry, breakfast nook and bay window option
- Relaxing family room with fireplace option
- Elegant master suite with large walk-in closet and cathedral ceiling, private bath with double sink vanity
- Oversized laundry room
- Two car garage



All dimensions are subject to field variations. Specifications and features are subject to change without notice.

© 1996 Paparone Homes of New Jersey



DON PAPARONE, INC.
 PAPARONE HOMES OF NEW JERSEY, INC.

Phone
(609) 424-7000