



The Mansfield

4 bedrooms, 2½ baths, two car garage, basement

Expansive, elegant and impressive, best describes the Mansfield.

Here your huge reception foyer with its open staircase sets the feeling for your entire home.

Truly a family oriented home in all respects. Adjoining the gracious foyer is the cheerful living room lighted by a wide triple, box bay window.

In addition to the sunken formal dining room, there is a breakfast room with space for breakfast table plus a wide dining bar facing the kitchen. Access to the garden area and rear patio is through wide sliding glass doors in this breakfast room.

The well conceived worksaving kitchen is complete with a wide pantry, deluxe appliances and an abundance of custom styled cabinetry.

Perfect for family fun and relaxed, informal entertaining is the spacious sunken family room with a broad three windowed box bay. An optional fireplace offers you the peaceful, tranquil family pleasure for which you have for so long dreamed.

Completing the first floor is a convenient powder room and an exceptionally large laundry.

On the upper level each of the four bedrooms boasts large closets. The master bedroom closet is almost twenty feet long. You will proudly enter your master suite through broad double doors. Your dressing room features a double bowled vanity with a counter top that provides space for a dressing bench before the wall to wall mirror. Also in your dressing room is a step up Roman style tub, behind which is a picturesque optional garden window. In addition to your complete dressing room there is a private bath with a stall shower.

Your hall bath also includes a double bowl vanity with space for a bench before the mirror for those cosmetic touches. For a picturesque accent, there is a built-in planter by the vanette.

In keeping with the spaciousness throughout, the linen closet is a big walk-in type.

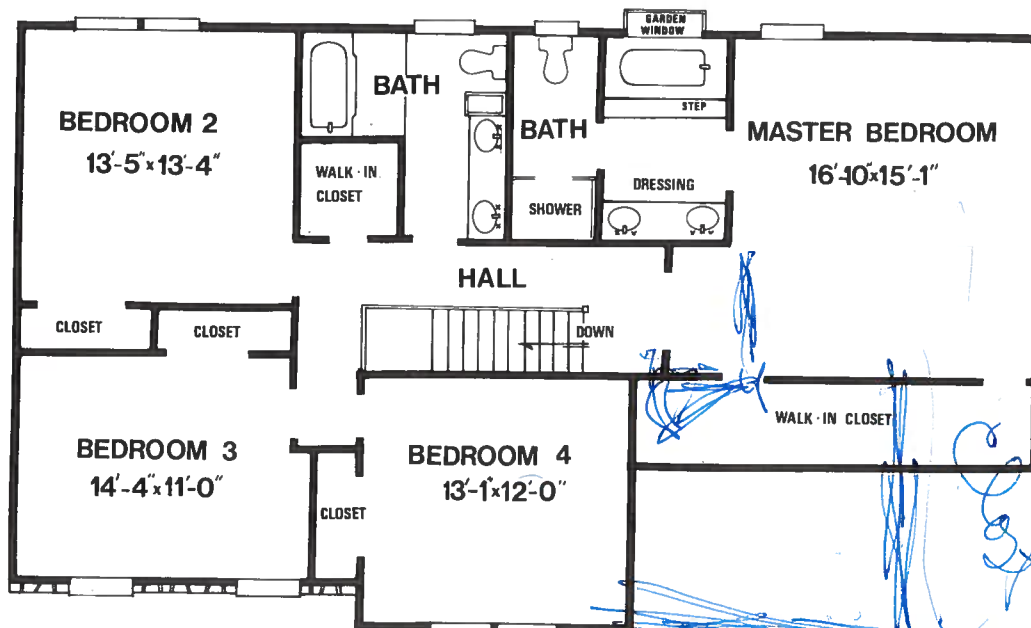
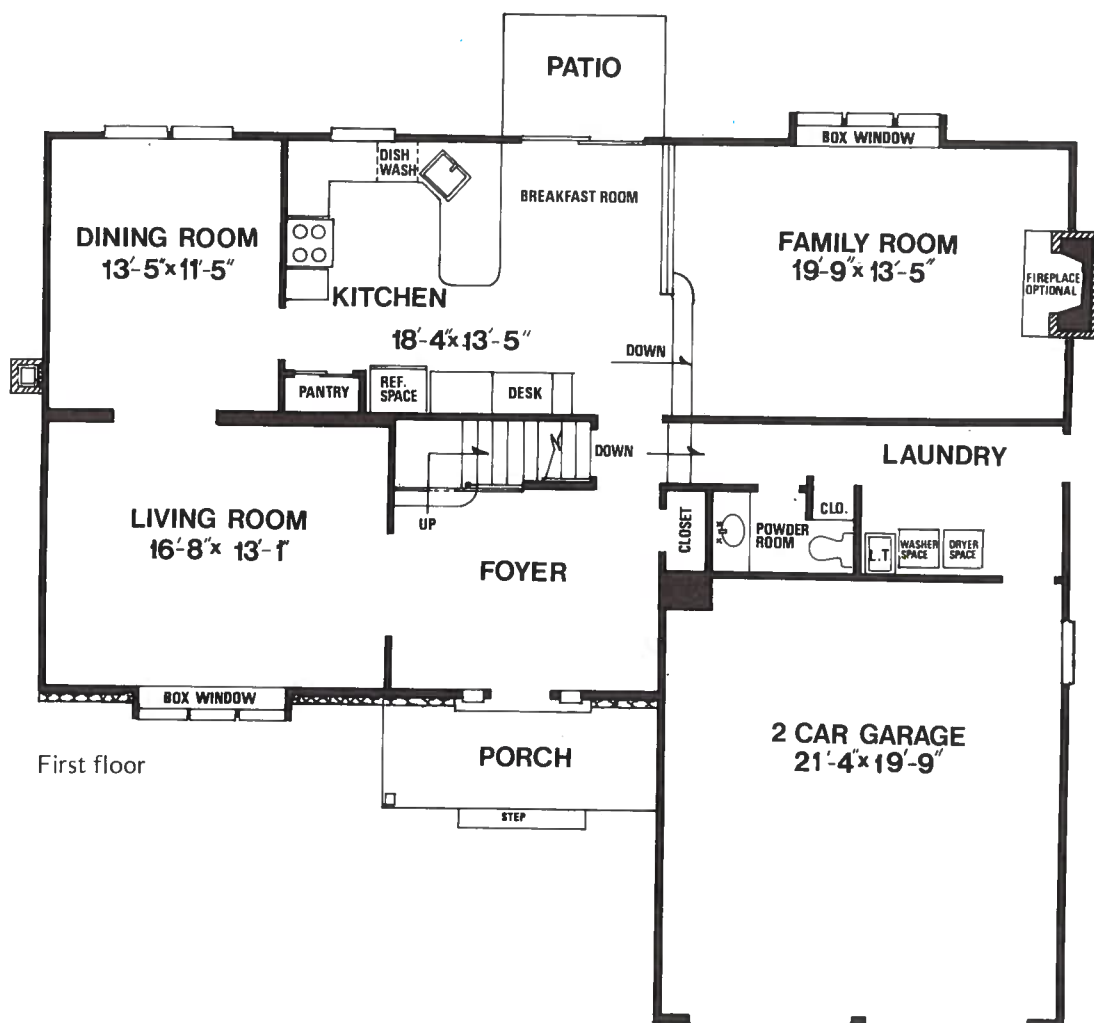
A full basement, professional landscaping and many other features also combine to make the Mansfield a family home you will be proud to own.

WEDGWOOD FARMS

in Washington Township

1-609-227-7300

US·Home
SUDECK DIVISION



All dimensions are approximate



The Greenbriar

4 bedrooms, 2½ baths, 2 car garage, basement, brick front and aluminum siding.

A colonial design which combines and improves on the best features of any colonial in the price range. Its roomy entrance foyer leads to a world of people-planned spaciousness, that includes a generous dining room, huge island kitchen with Caloric Double - Oven, dishwasher and disposal. The roomy breakfast area is overlooking a 21 x 13-foot family room with panelled wall, ceiling beams and a sliding door leading to a paved patio. A big, all-purpose laundry room is handy to

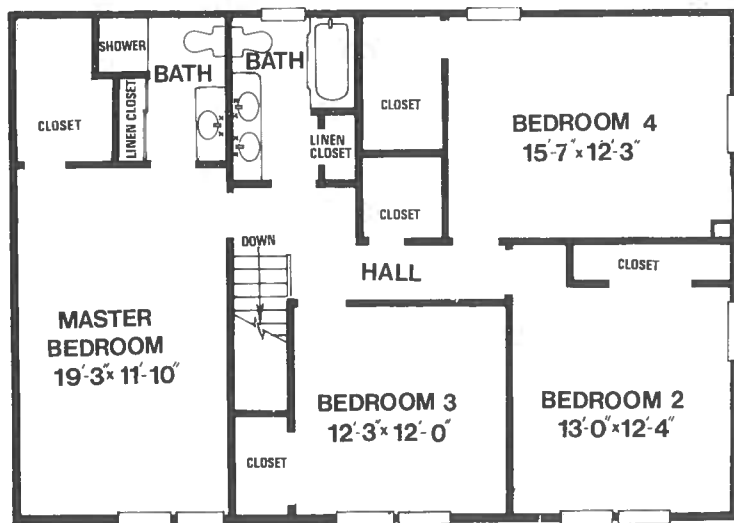
the kitchen; the powder room is convenient and private. All bedrooms are of master size, able to accommodate twin beds, and there is an ample amount of closet space for the larger family. Baths feature vanities and ceramic tile. For extra space, a two car garage and a full basement provide ample storage room. Other luxury touches will be found throughout this huge and spacious colonial.

WEDGWOOD FARMS

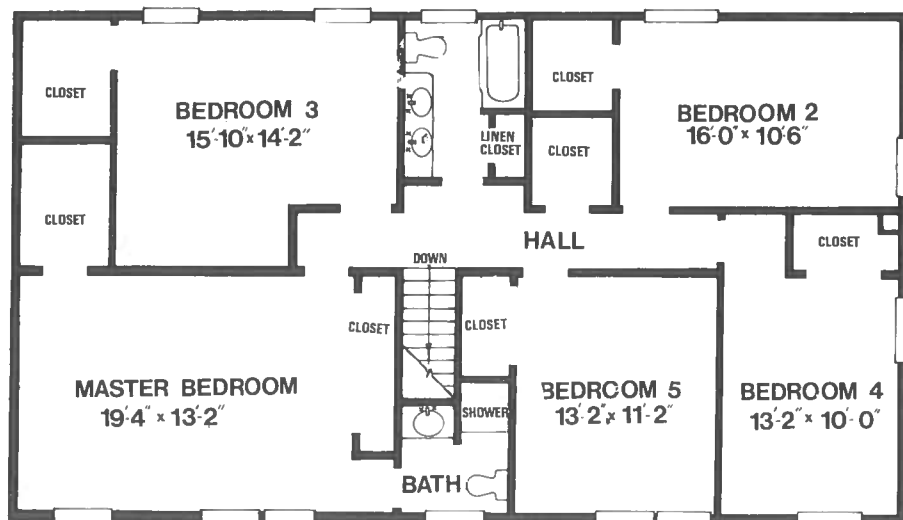
in Washington Township

1-609-227-7300

US·Home[®]
SUDECK DIVISION



Second floor - 4 bedroom plan

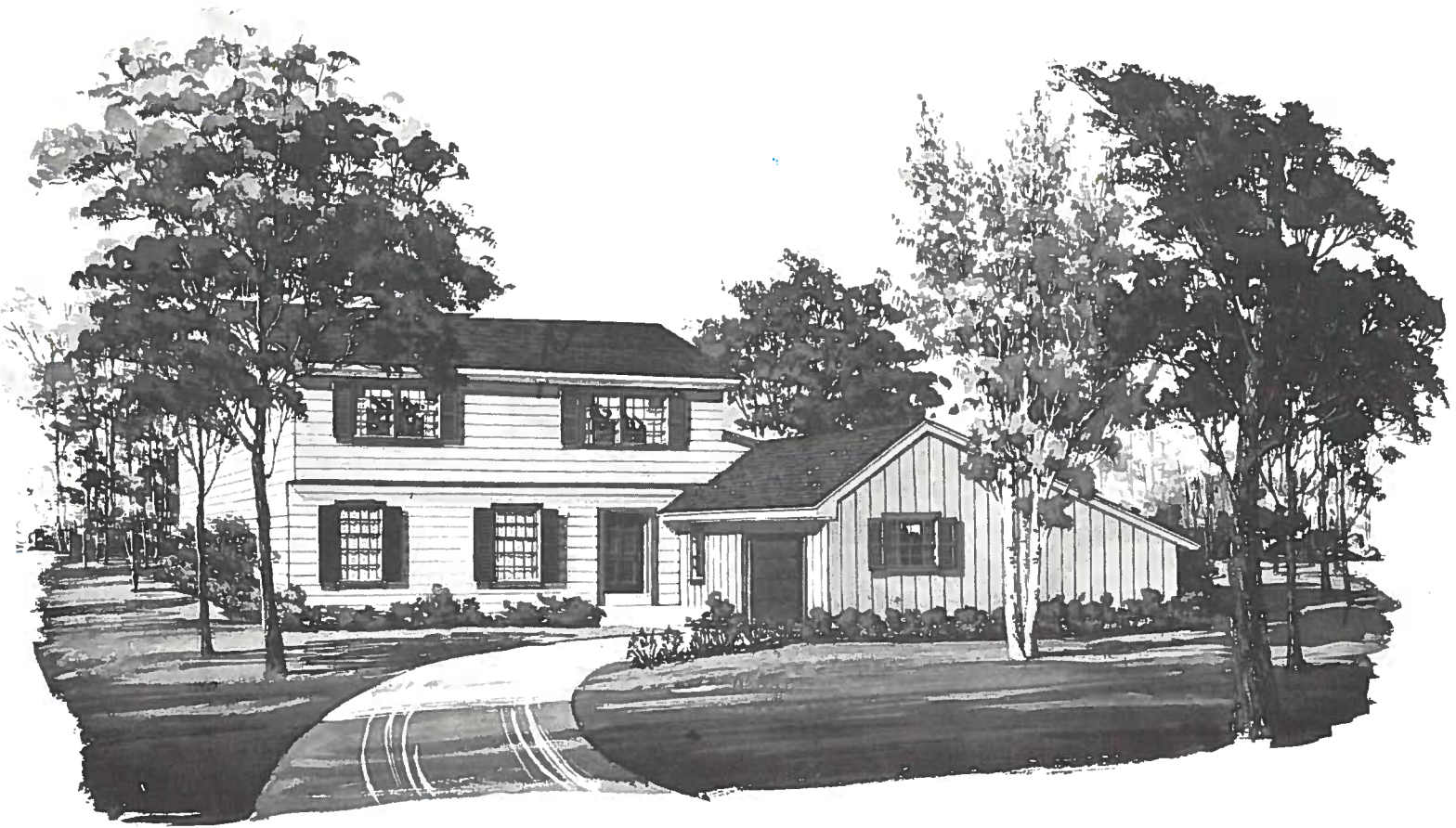


Second floor - 5 bedroom plan



First floor

All dimensions approximate



The Pinecrest

3 bedrooms, 1½ baths, single car garage, basement, large family room, aluminum siding, all Caloric kitchen.

Here a two story "New England" look is achieved by the use of vertical and horizontal siding and a long sloping roof on the garage.

The generous entrance foyer leads directly into every major living area of the Pinecrest. The long living room with its deep cottage window provides excellent flexibility for imaginative decorating arrangements.

Next to the formal dining room is the spacious

well arranged kitchen. A breakfast area, with an interesting corner window, adjoins the kitchen. Next to the kitchen is a truly huge family room with space for an optional fireplace.

The second floor of the three bedroom model includes a master bedroom suite that has a large walk-in closet, a dressing area with a vanity and a private entrance to the bath. A four bedroom arrangement is also available.

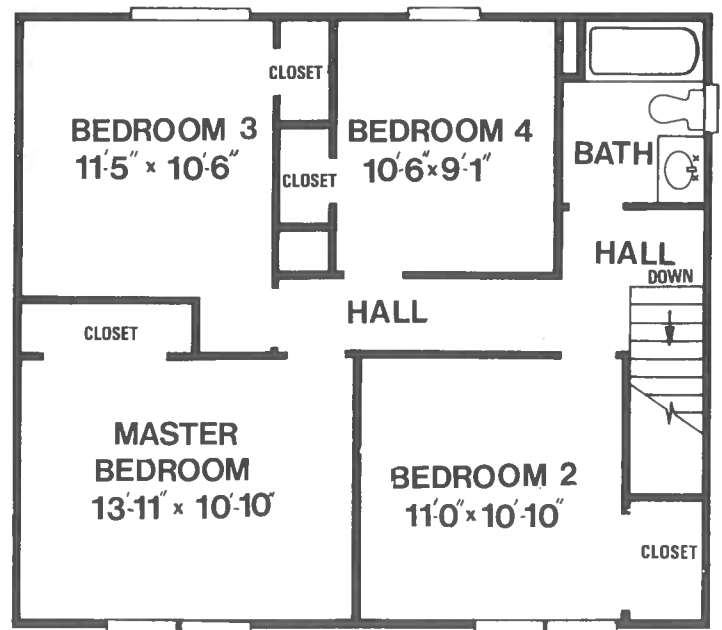
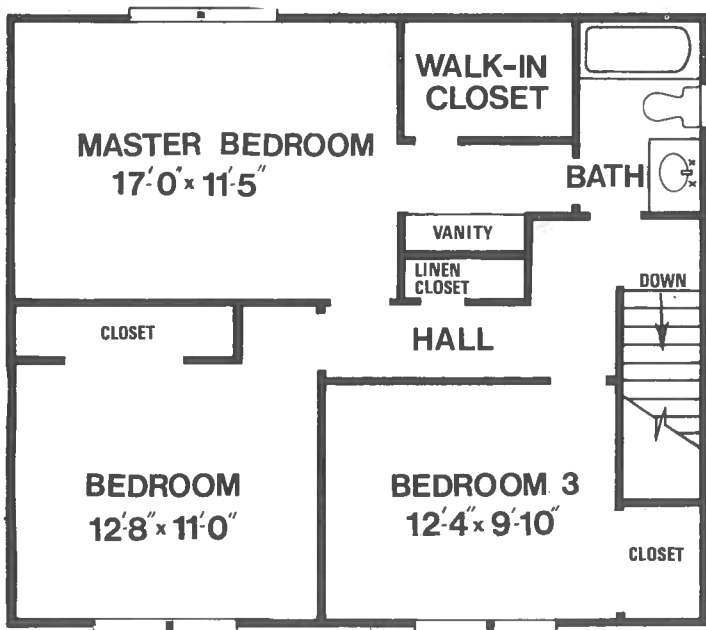
WEDGWOOD FARMS

in Washington Township

1-609-227-7300

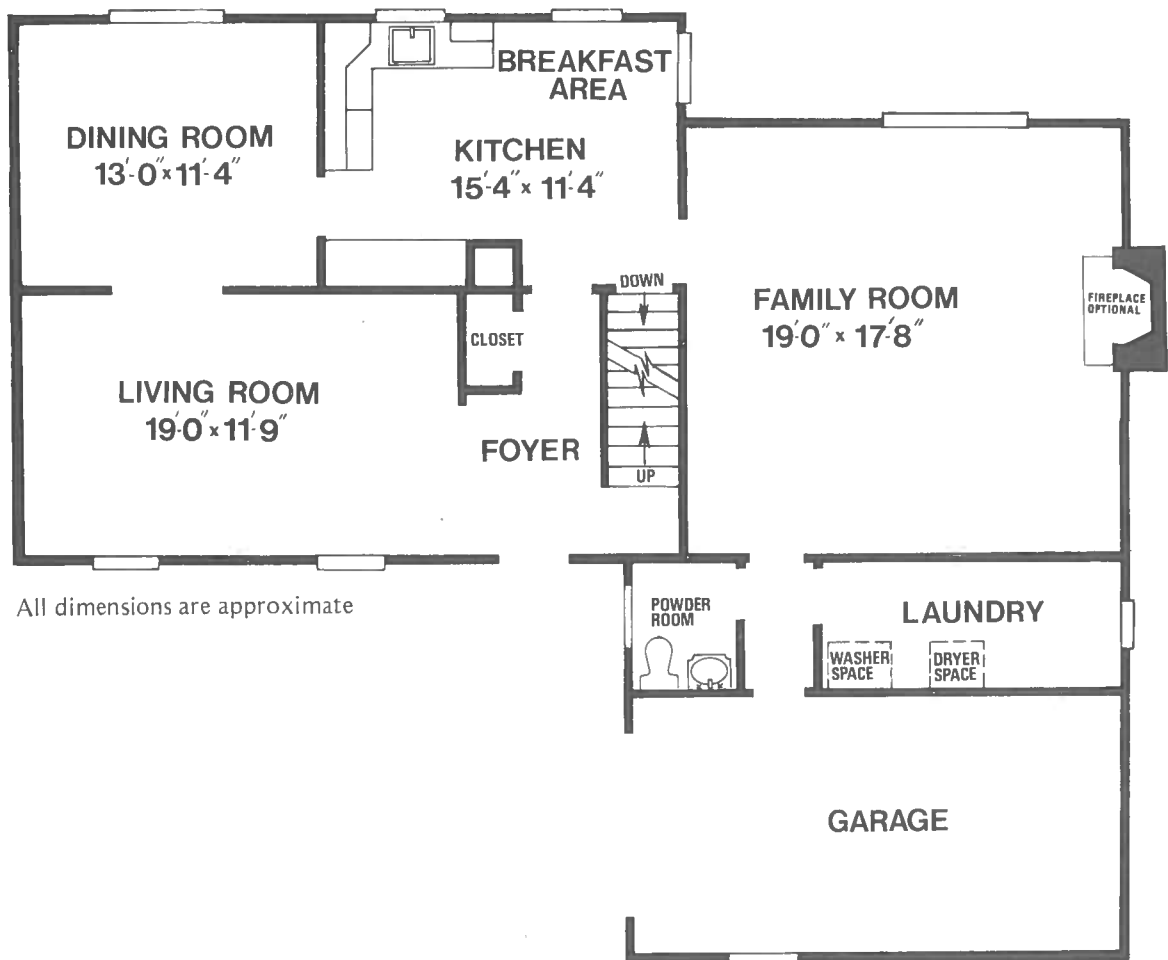
US·Home®

SUDECK DIVISION



Second floor - 3 bedroom plan

Second floor - 4 bedroom plan



All dimensions are approximate

First floor

An environmental community with every convenience to make your life enjoyable. Surrounded by the Wedgwood Country Club, farms and rich woodlands.

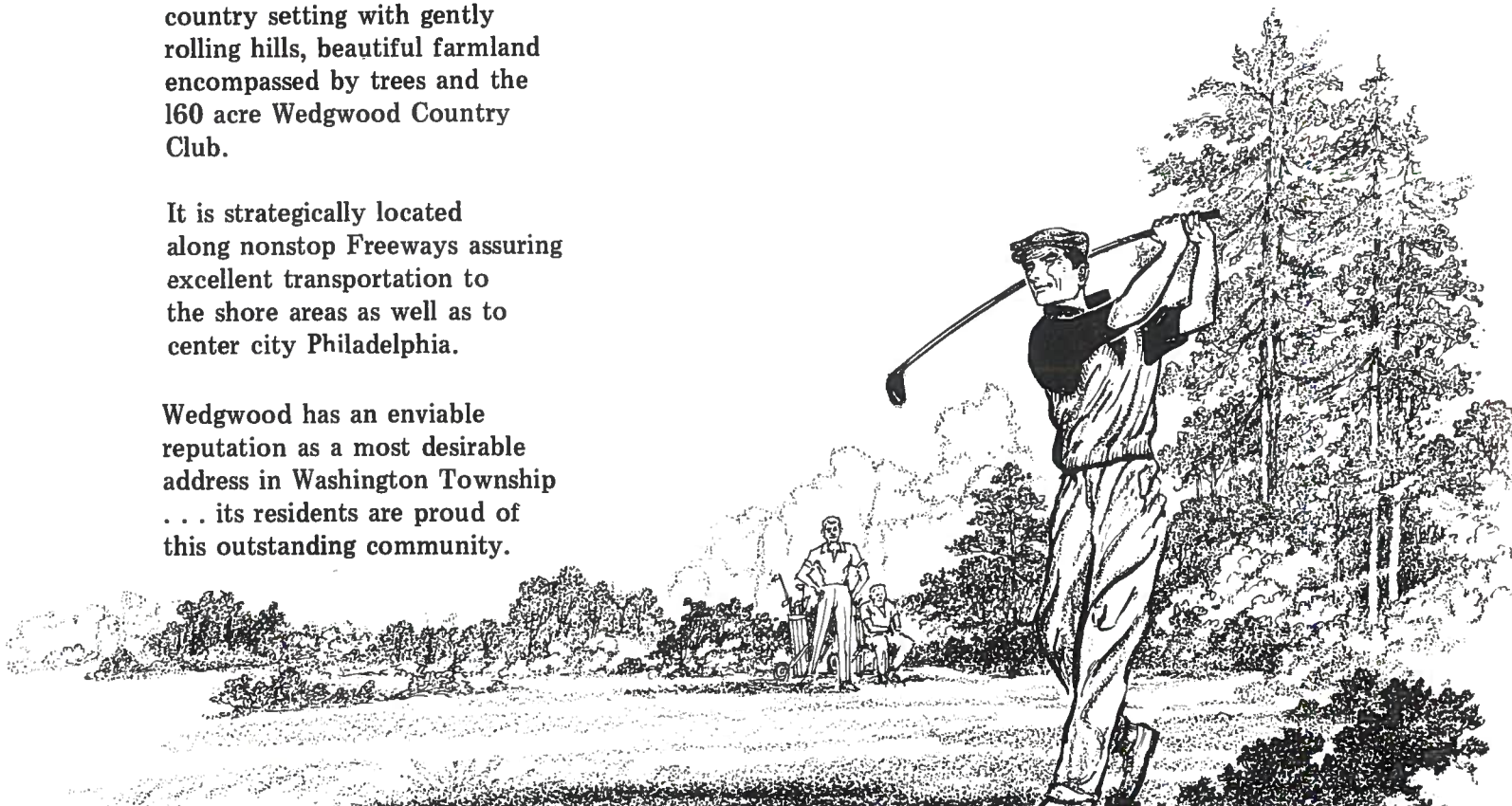
WEDGWOOD FARMS

Washington Township, New Jersey

Wedgwood is in a picturesque country setting with gently rolling hills, beautiful farmland encompassed by trees and the 160 acre Wedgwood Country Club.

It is strategically located along nonstop Freeways assuring excellent transportation to the shore areas as well as to center city Philadelphia.

Wedgwood has an enviable reputation as a most desirable address in Washington Township . . . its residents are proud of this outstanding community.



SUDECK DIVISION



10 year buyer
protection plan

Every so often, in residential building, a name emerges - - a name that carries an aura of trust and competence, success and responsibility. And the name alone adds value and appeal to the homes that bear that "signature."

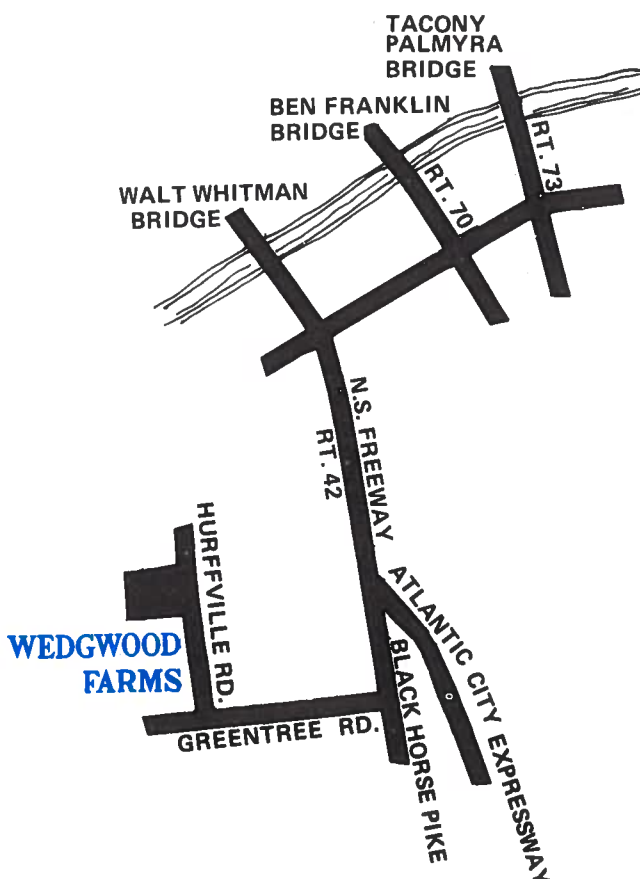
The name of Glenn Sudeck is a prime example. It represents the third generation in a family of fine home builders. And it belongs to young yet immensely experienced builders of hundreds of high quality residences in the Southern New Jersey and Philadelphia area. Glenn Sudeck's personal reputation was one in private Real Estate ventures, and in the development of many outstanding communities as a key executive of U. S. HOME, Paparone Division. And in recognition of the high respect that he has earned, he has now been charged with full responsibility for the U. S. HOME Division which bears his name today.



The Sudeck divisions goals and policies are identical with those of the man in charge. He states them vary simple: "More home for your dollar" . . . "A quality environment" . . . "The chance to see your housing investment grow in value year after year" . . . and "designs that are dictated by what the home buyer really desires."

It's a philosophy that's in perfect harmony with the principles of U. S. HOME, the well-known national Corporation which relies on the efforts of people like Glenn Sudeck to maintain wholesome, neighborly relationships with all its customers - - in communities from coast to coast.

N.S. Freeway Rt. 42 past Atlantic City Exp.
Continue on Black Horse Pike Rt. 168 to
Greentree Rd. Turn right for one mile.
Turn right on Hurffville Rd. to sample.
Open every day 11 to 5.
Phone 1-609-227-7300



WEDGWOOD FARMS

QUALITY FEATURES OFFERED WITH EVERY HOME AT NO EXTRA COST

Low Maintenance Aluminum Siding
Aluminum Gutters & Downspouts

Special Energy
Saving Package

Aluminum Insulated Windows With Screens -

Insulated Sliding Glass Door **WITH SCREEN**

Insulated Steel Front Door

Energy Saving Full Thick Insulation - R-30 Ceiling - R-19 Sidewalls

Self-Sealing Asphalt Roof Shingles
Basement For Added Storage Convenience
Wall To Wall Carpeting
Vinyl Asbestos Floor Tile
Full Ceramic Tile Baths On Second Floor
Caloric Self-Cleaning Oven With Range Hood & Fan
Energy Saving Caloric Dishwasher
Caloric Waste Disposal
Moen Single Lever Faucets
150 AMP Electrical Service
220 Line & Vent For Clothes Dryer
Plumbing Hook-Up For Clothes Washer
Glass Lined Hot Water Heater
Front Door Chimes
Finest Wood Kitchen Cabinetry
Smoke Detector
Painted Interior Walls & Ceilings
Exterior Garden Hose Spigots
Weather-Proof Exterior Electrical Receptacle
Concrete Driveway
10' x 12' Concrete Patio
3' Concrete Walkways
Separate Laundry Area
Laundry Tub Included Where Shown
Paneling & Wood Beams Where Shown In Models
U. S. Home Service Policy
The 10 Year (HOW) Home Owners Warranty
Pre-Wiring for Central Air
Foundation for Fireplace

US·Home

SUDECK DIVISION



The Tamarron

4 bedrooms, 2½ baths, 2 car garage, basement

You'll find the Tamarron surprisingly spacious, and includes the many features most desired in a home.

Your reception foyer includes, in addition to a guest closet, a convenient powder room, an open staircase, access to the garage, to the living room and to the family room. The living room has a railed balcony overlooking the sunken formal dining room. For day to day family meals there is a breakfast room adjoining the deluxe kitchen. A convenient household planning desk is built in as part of the breakfast room.

Your inviting family room includes a wet bar to assist you with your gracious entertaining. An optional fireplace has a beautiful raised wall to wall hearth. Cheerful light is provided by a wide

double window plus a set of sliding glass doors which lead to the rear patio.

The facinating second floor has a railed hallway with a unique view of the living room below. Your master bedroom suite is complete with a dressing room which includes a double bowl vanette and a place for a cosmetic bench. There is a walk-in closet in the dressing room plus an additional closet in the bedroom. The compartmented master bath has a step up tub and a picturesque large planter by the window. In the bedroom, overlooking the living room, there is a unique balcony with louvered shutters. The hall bath also has a double bowl vanity.

A roomy 2 car garage and many other quality features are included in this exciting home.

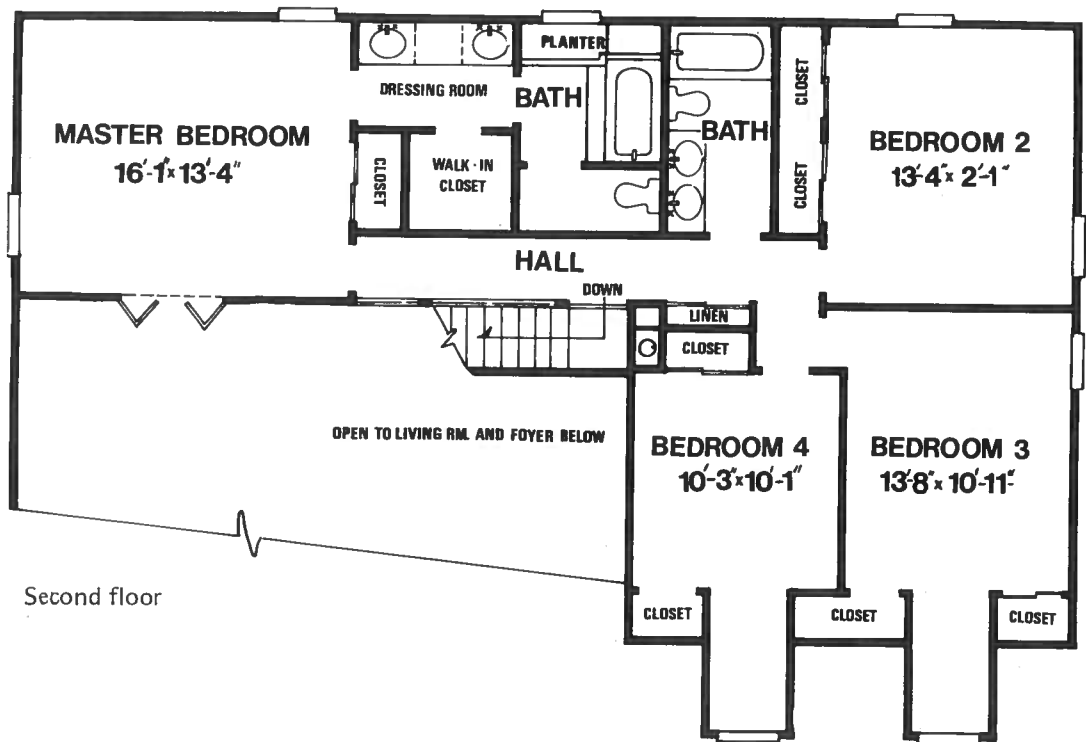
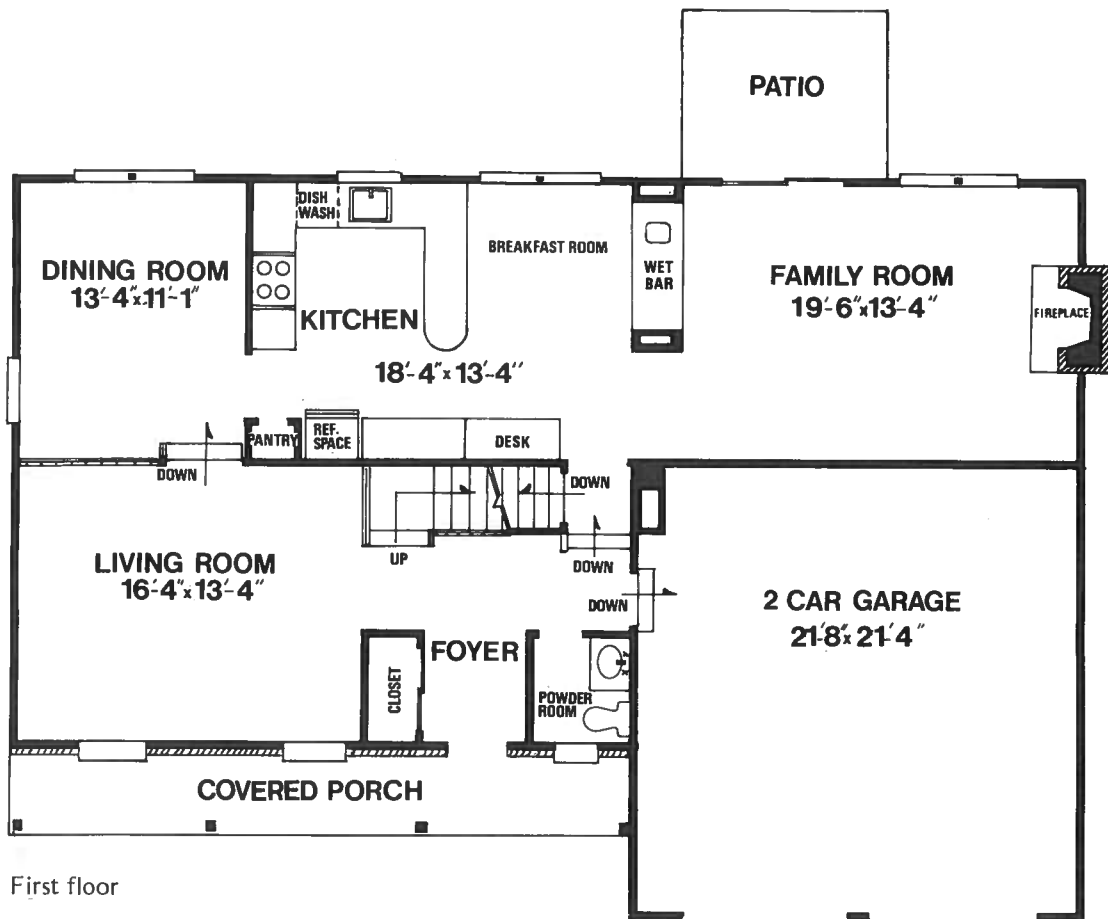
WEDGWOOD FARMS

in Washington Township

1-609-227-7300

us·Home

SUDECK DIVISION



All dimensions are approximate



The Braeburn

3 bedrooms, first floor library, study or den, family room, 2½ baths, 2 car garage, basement, brick and aluminum siding.

As you enter the imposing reception foyer, you will instinctively recognize the sense of tasteful dignity of the Braeburn. To one side of the foyer is the elegant living room with its optional fireplace. Just off the living room is a secluded private study or library. This is just one of the luxury touches that are so welcome but hard to find today. In addition to the formal dining room, there is an informal breakfast area adjoining the gourmet kitchen.

Open spaciousness and convenience is captured in the family oriented recreation room, kitchen and breakfast area. A unique and interesting corner fireplace is available in the recreation room. Notice the convenient powder room and laundry

room with direct access to the garden area and to the 2 car garage. When ascending the gracious open staircase, you'll find all the bedrooms are spaciouly designed to fully serve the needs of the entire family.

The gracious master bedroom suite includes one closet 12 feet long plus an additional closet. Of course there is a complete private bath with a shower. The center hall bath features a double bowl vanity and convenient linen closet. There is also a second linen closet in the hall.

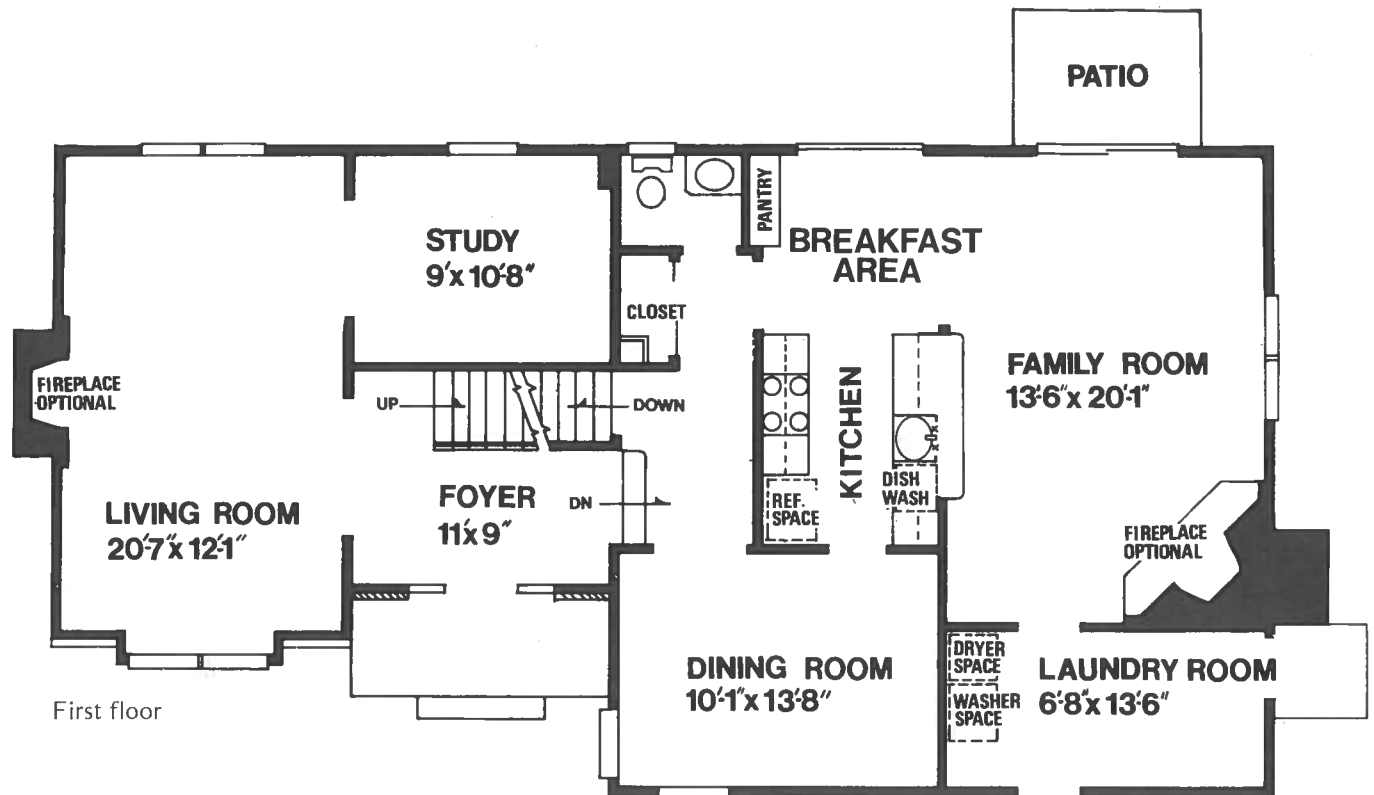
You'll find the many beautifully appointed details add to the overall magnificence of this exceptional home.

WEDGWOOD FARMS

in Washington Township

1-609-227-7300

US·Home[®]
SUDECK DIVISION



All dimensions are approximate